



Via Princessa Park and Regional Infiltration BMP

Funding Program (Infrastructure Program/Technical Resources Program)

Fiscal Year 2023-2024

Santa Clara River Watershed Area

City of Santa Clarita

Leslie Frazier

Previously Awarded Technical Resources Program



Project Overview

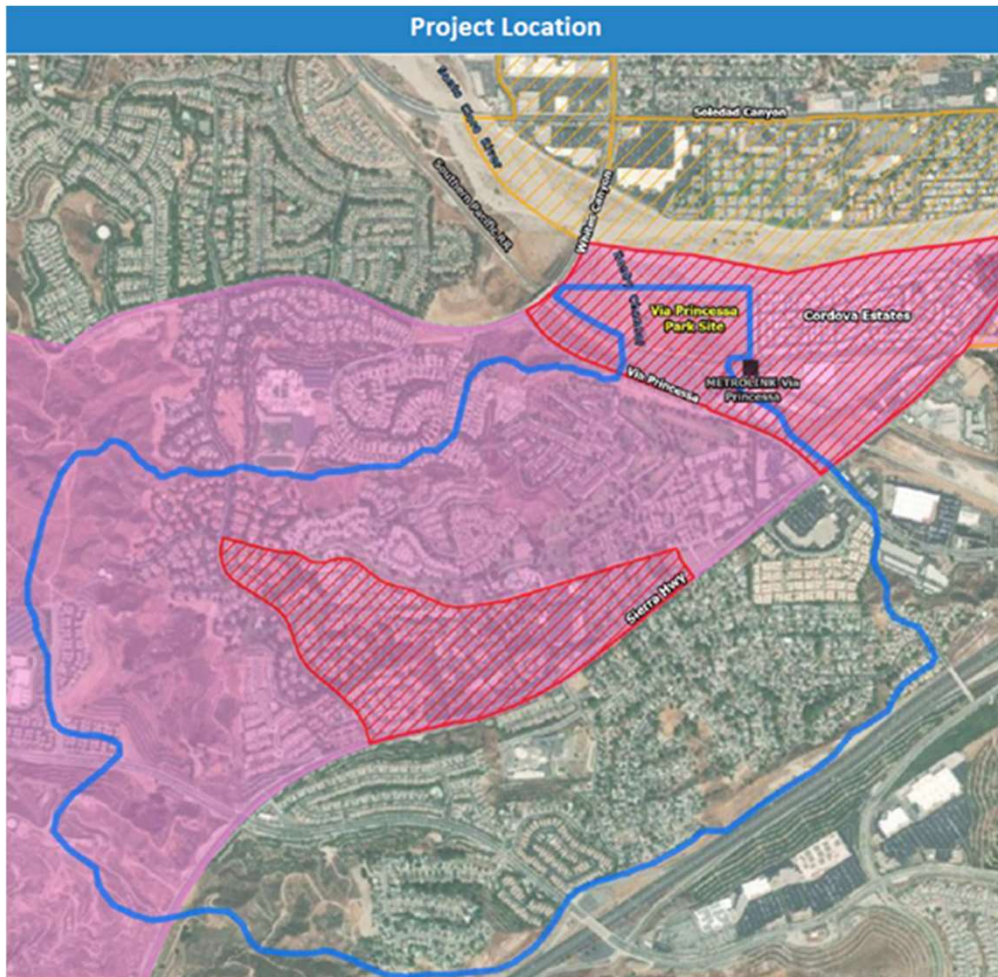
Via Princessa Park and Regional Infiltration BMP

- Stormwater infiltration
 - New park for underserved community
-
- Primary Objective: Reduce pollutants reaching the Santa Clara River
 - Secondary Objectives: Meet the park and recreational needs of the surrounding community / recharge groundwater
 - Project Status: Design
 - Phases for which SCW funding is being requested: Construction, O&M
 - Total Funding Requested: \$ 20,079,768.00





Project Location



Via Princessa Park and Regional Infiltration BMP

- Via Princessa & Whites Canyon
- Reach 7 Santa Clara River
- 998 acres sub watershed
 - 15% CII
 - 83% MF residential
- Disadvantaged Communities



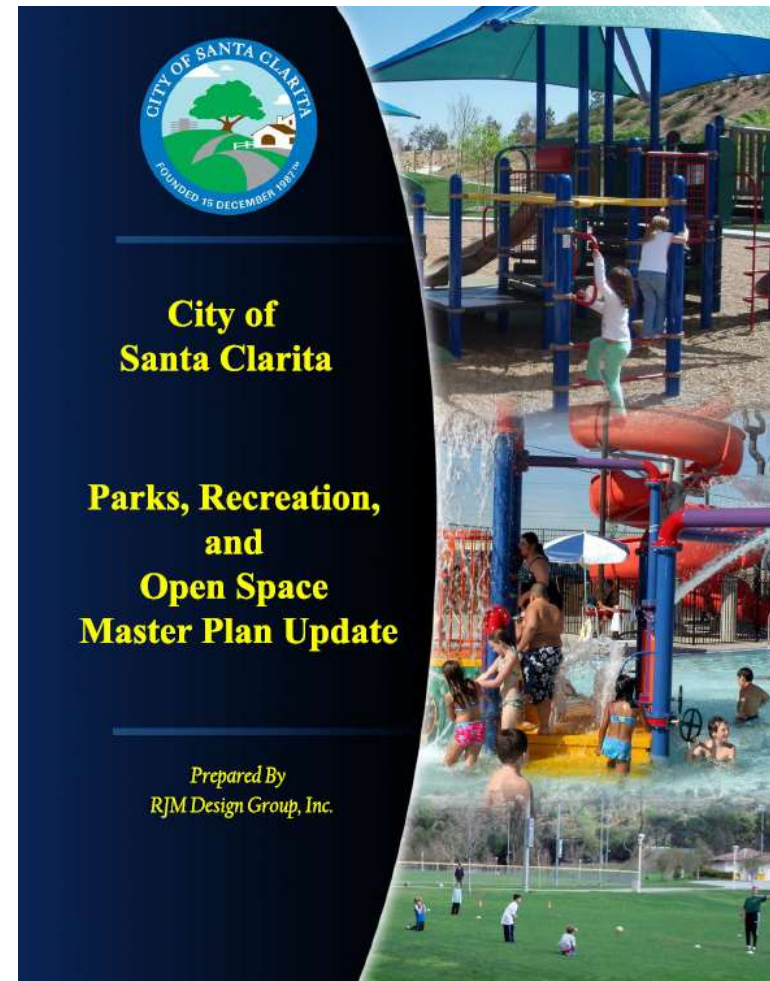
Project Background

Why was the location selected?

- Identified since 2008 as a potential park to fill gaps
- High priority stormwater infiltration project identified in 2015

How was the Project developed?

- Property acquisition 2016
- Concept planning and design since 2021





Project Background

City Benefits

- 84% bacteria reduction
- 89% copper reduction
- Potential 715 acre feet groundwater recharge annually
- Supports more field space demanded by residents
- Hundreds of trees



Benefits to Surrounding Underserved Community

- Create new park space and recreation
- Improved and safer public access to Santa Clara River
- Reduces heat local island effect and increases shade
- Honby Channel/native plant restoration



Partners

Partners

- City of Santa Clarita
- Upper Santa Clara River IRWM

Project in **Upper Santa Clara River Enhanced Watershed Management Plan 2015**

Letters of Support/Concurrence

- Mobile home park
- SCV GSA
- Vector Control District
- Flood Control District

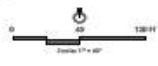




Site Plan of Water Based Features



- 20 NEW EXTENDED STORM DRAIN CULVERT PER CIVIL
- 13 NATURAL PLAY AREA INTEGRATED WITH STORMWATER BIOSWALES, STORMWATER COLLECTION SWALES DIRECTS STORMWATER TO BMP INTAKE
- 26 SUBGRADE INFILTRATION BMP
- 20 HONBY CHANNEL RESTORATION
- 32 EXISTING OUTLET
- 9 DIVERSION STRUCTURE IN HONBY CHANNEL PARK STORMWATER
- A DRAINAGE CONNECTION TO HONBY CHANNEL
- B PARKING STALLS W/ PERVIOUS PAVERS
- C ROCK GARDEN / INFILTRATION TRENCH
- D STORMWATER BIORETENTION RAIN GARDEN
- E GREEN SPACE VEGETATED BUFFER
- F ENHANCED BIOSWALE BIORETENTION





Funding Request

Year	SCW Funding Requested	Phase	Efforts during Phase and Year
1	\$11,055,619.00	Construction	CMP, diversion line, diversion structure, pretreatment (incl. materials, labor, tax, overhead/profit, contingency)
2	\$ 8,943,149.00	Construction	Above-ground park components (i.e. trees, new shrubs, irrigation, picnic tables, play structures, wayfinding art, bike racks, benches, etc.)
3	\$27,000	O & M	Inspections of system, clean out vortex system, sediment trap and infiltration beds as required
4	\$27,000	O & M	Inspections of system, clean out vortex system, sediment trap and infiltration beds as required
5	\$27,000	O & M	Inspections of system, clean out vortex system, sediment trap and infiltration beds as required
TOTAL	\$ 20,079,768.00		



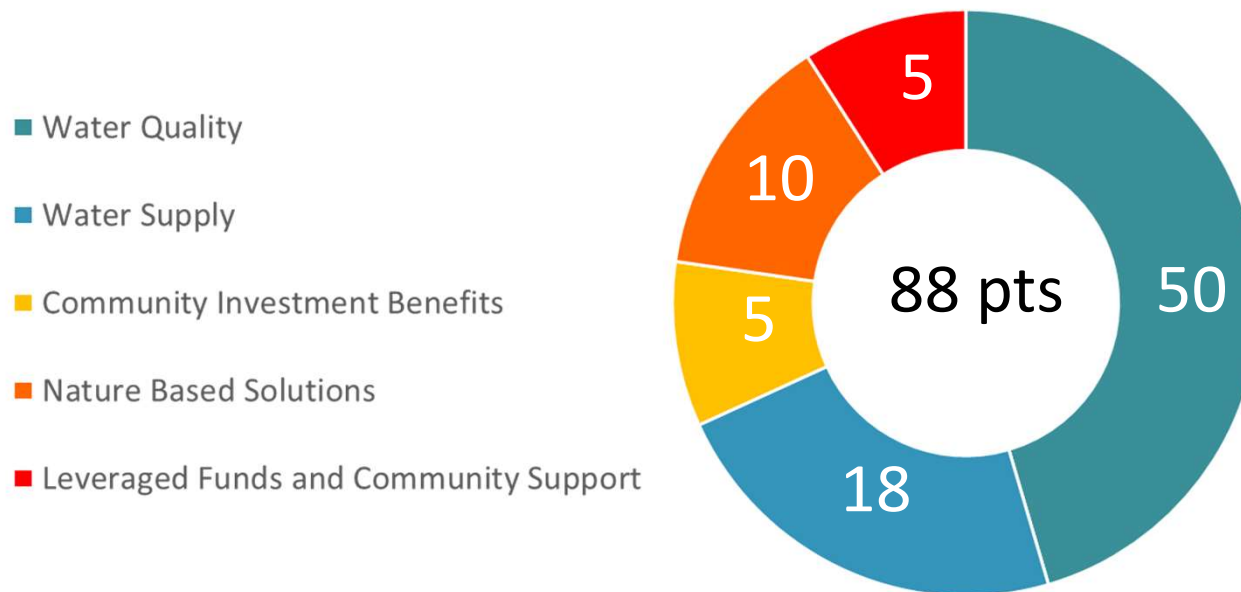
Cost & Schedule

Phase	Description	Cost	Completion Date
Planning	Feasibility work, initial planning, conceptual design, coordination with agencies and sub-consultants, preparation of grant applications	\$1,000,000.00	07/2022
Design	Final design of the BMP and park will include developing plans, obtaining required permits, coordinating with other agencies & sub-consultants	\$6,554,828.00	12/2024
Construction	CMP, diversion line, diversion structure, pretreatment, Above-ground park components.	\$19,998,768.00	12/2026
TOTAL		\$ 27,553,596.00	



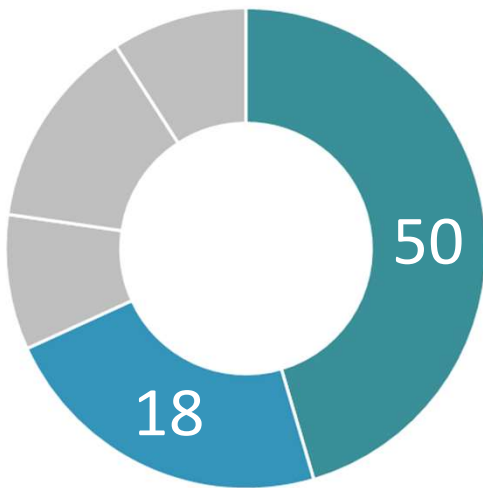
Re-Scoring to be Heard by the Scoring Committee

The Scoring Committee
approved December 1, 2022





Water Quality & Water Supply Benefits



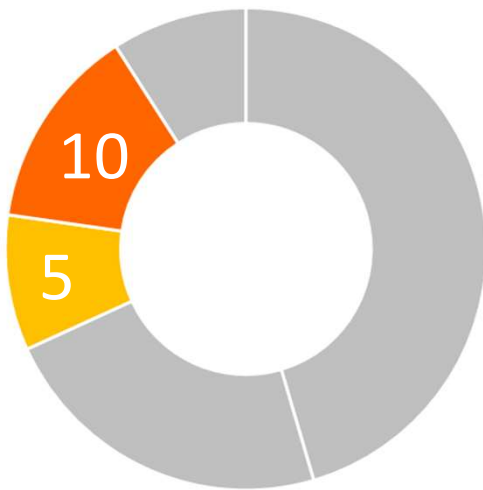
The Scoring Committee
approved December 1, 2022

- Wet and Dry benefits
- Tributary Area 997.8 acres
- 24 hour Capacity 32 acre feet
- Bacteria and Copper Pollutant Reduction
- Potential Groundwater Recharge 715 acre feet annually
- Water Supply \$1,747 per acre foot

Meets the highest cost effectiveness score
for both water supply and water quality



Community Investment Benefits and Nature Based Solutions

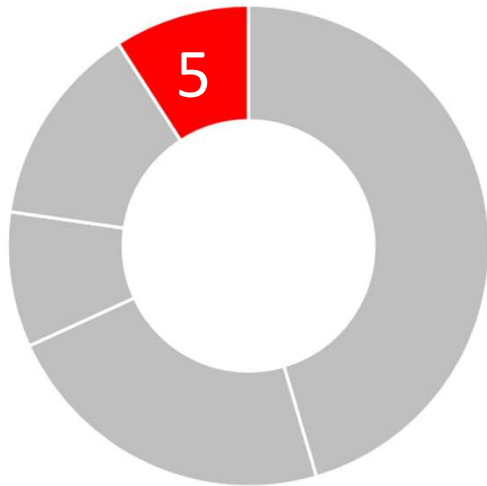


The Scoring Committee
approved December 1, 2022

- Community Investment Benefits
 - Create park space and restore habitat/wetland
 - Improve public access to waterways
 - Creates new recreational opportunities
 - Reduces heat local island effect and increases shade
 - Increases number of trees or other vegetation
- Nature Based Solutions
 - Nature mimicking strategy
 - 4.6 acres of new vegetation will be added to the park
 - 34 distinct native species and 309 trees
 - 1.6 acres of new vegetation in Honby Channel area with 22 distinct native species
 - Bioswales



Leveraging Funds and Community Support



The Scoring Committee
approved December 1, 2022

- Leveraging Funds - Over 25% Matching
 - \$6,000,000 SCW Municipal - Funds received & Future funds
 - \$1,000,000 Prop A –Commitment received
 - \$3,000,000 Measure A – Future funds from annual allotment
 - \$4,882,804 Prop 1 IRWM – In progress
- Community Support
 - Mobile home park and community members support letters
 - Engagement
 - City Council Meetings
 - Open House July 2022
 - Future Community Meetings



Questions?

Leslie Frazier

Heather Merenda