

Frequently Asked Question (FAQ)

Can we get the Map of the Storm Drain in Pico Canyon?

Check Reference: Map 1.

How much water is diverted and how much is bypassed?

Based upon historical rainfall data from January 1, 2008, and January 1, 2018, the total rainfall runoff is estimated to be 18 AF/yr with an estimated total infiltration of 5.5

AF/yr What aquifer would the project infiltrate into?

Santa Clara River Valley East Groundwater Basin. Check Reference: Map 2

What is the cost of the project on the community?

Every property is assessed 2.5 cents for every square foot of impermeable surface on their property tax bill thru the Safe Clean Water Act passed in 2018.

How many homes are in the Pico Canyon Drainage Area?

320 Parcels. Check Reference: Map 3.

How many homes are in the Jake Kuredjian Drainage Area?

1000 parcels. Check Reference: Map 4.

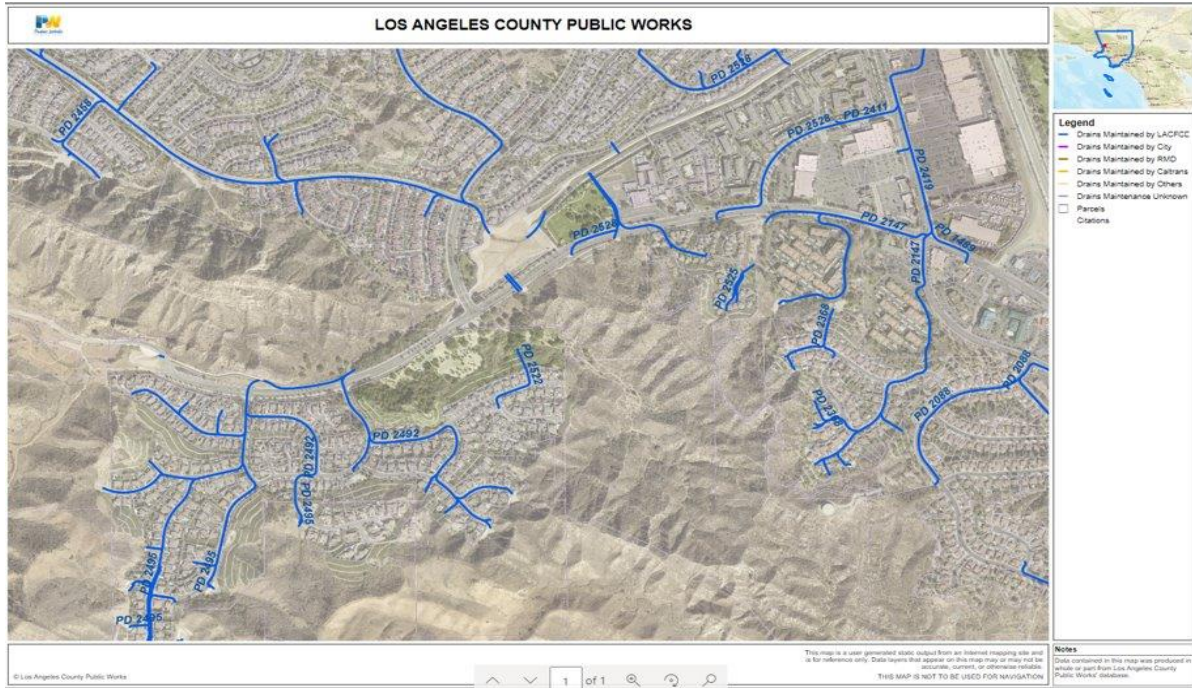
Can we connect Jake Kuredjian and Pico Canyon?

It would be possible to combined Jake Kuredjian and Pico Canyon into a single project, however the individual project elements for Pico Canyon would still be required in order to capture the required storm volume. This would significantly increase the cost and duration of the overall project.

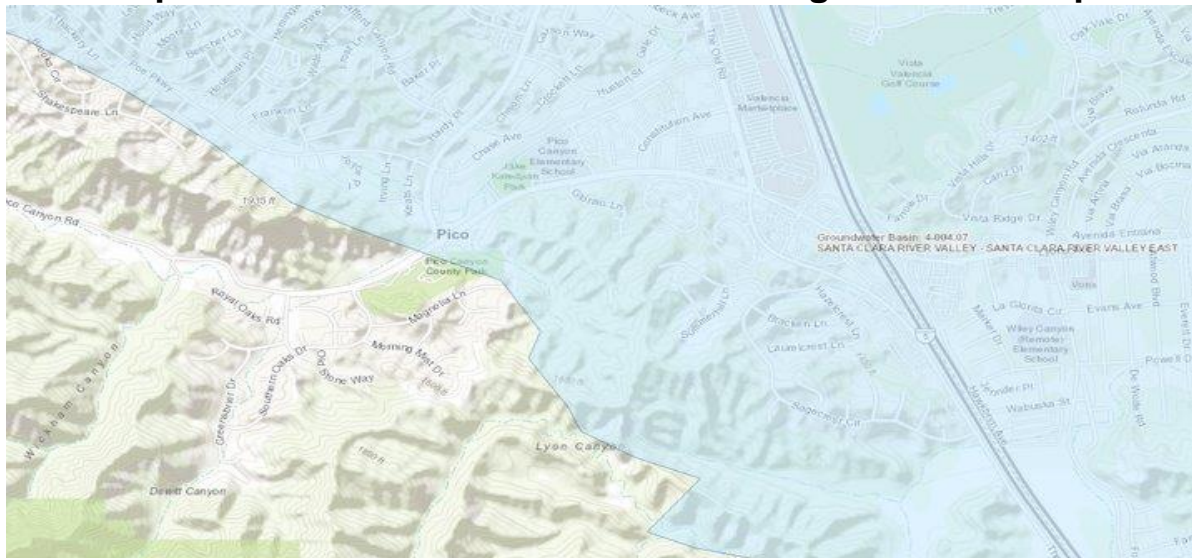
In order to combine the flows from Pico Canyon, not only a pump would be required, but a pre-treatment and cistern would be needed to prevent the bypassing of flows and for the pump to effectively operate.

References Maps

Map 1 – LA County Drainage Systems

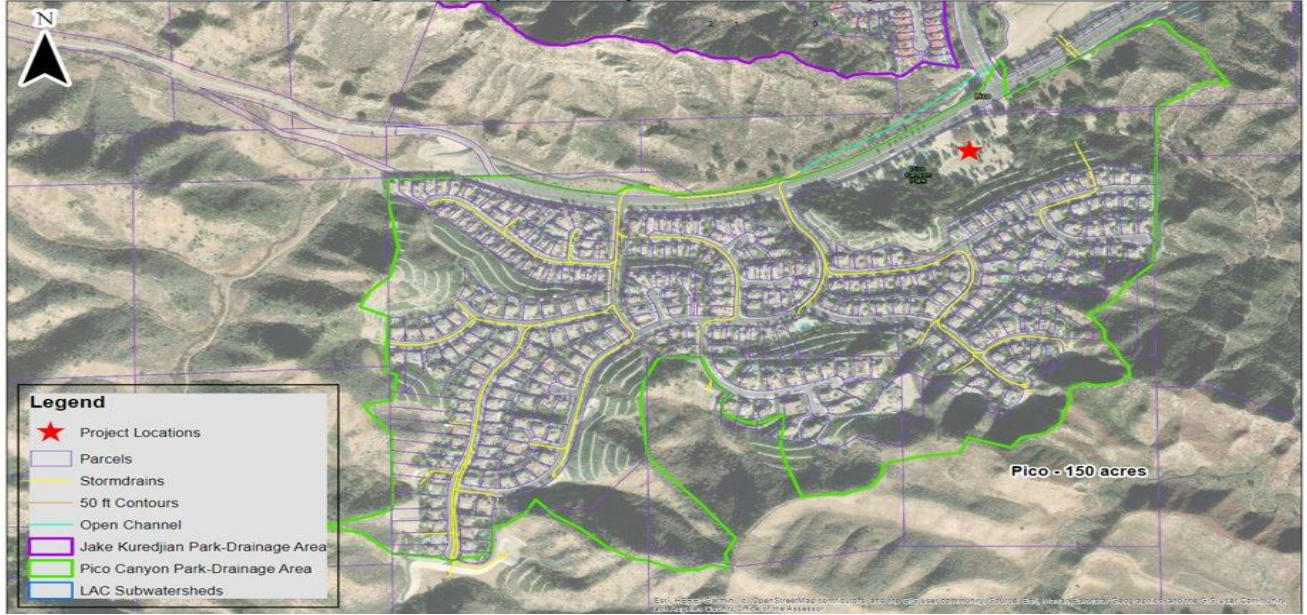


Map 2 – Sustainable Groundwater Management Act Map



Map 3 – Pico Canyon Park Drainage Area

Drainage Area Map: Pico Canyon Park & Jake Kurejian Park



Map 4 – Jake Kuredjian Drainage Area

Drainage Area Map: Pico Canyon Park & Jake Kurejian Park

