



Public Stakeholder Workshop

For the Metrics & Monitoring Study
of the Safe, Clean Water Program
November 16 & 17, 2022





Safe, Clean Water Program Goals Part 1 of 2

- Improve water quality
- Increase drought preparedness through stormwater capture
- Improve public health
- Invest in multi-benefit infrastructure
- Prioritize nature-based solutions
- Provide disadvantaged community benefits
- Leverage other funding



Safe, Clean Water Program Goals Part 2 of 2

- Provide a spectrum of project sizes
 - Encourage innovation
 - Invest in independent scientific research
 - Provide proportional funding
- Ensure adaptive management
 - Promote green jobs
 - Provide ongoing operations and maintenance of projects

The Goal of the MMS is to:

Develop program methods, metrics and monitoring criteria to inform tracking, planning, reporting and decision making within specific areas of the SCWP





Overview of the MMS

STUDY RESULTS & TOOLS TO ASSIST WITH
DEVELOPMENT OF PROCEDURES & GUIDELINES

DISTRICT

STAKEHOLDER
ADVISORY
COMMITTEE
facilitated by District
technical team

MULTI-
BENEFIT
FOCUS
AREAS*

* DAC, Equity:
Christensen, Pierce,
Carter
BMP Performance
Index: SCCWRP
Groundwater
Recharge: Bureau of
Reclamation

SCWP
Committee
Members

OTHER METRIC-
SETTING &
MONITORING
STUDY EFFORTS

BROADER
STAKEHOLDER
GROUP

- Is a stakeholder driven process
- Will help inform the adaptive management process



What is a metric?

A metric is a measurement of the state of something, or of a trend over time or space.

An indicator is one or many metrics that together are taken to represent the status or trend of something.

Metrics --> Relative Humidity, Temperature, Wind Speed, Wind Direction

Indicator --> Percent Chance of Rain

Application --> Do I need an umbrella today?

Metrics --> Tire pressure in pounds per square inch (PSI)

Indicator --> Dashboard tire pressure warning light

Application --> I may need to add air to the tires.



Existing Evaluation Metrics

101

Approved and recommended

Infrastructure Program Projects representing over

\$1.2 billion

in investments through

FY26-27

(\$670M of SCWP Regional Program dollars)

Capture stormwater from over

222,000 acres

Provide an increase in total 24-hr storage capacity of

4,070 AF

Provide an increase in annual average stormwater capture of

56,915 AF

Leverage other funding nearing

\$542M

Invest in projects benefiting disadvantaged communities

\$343M

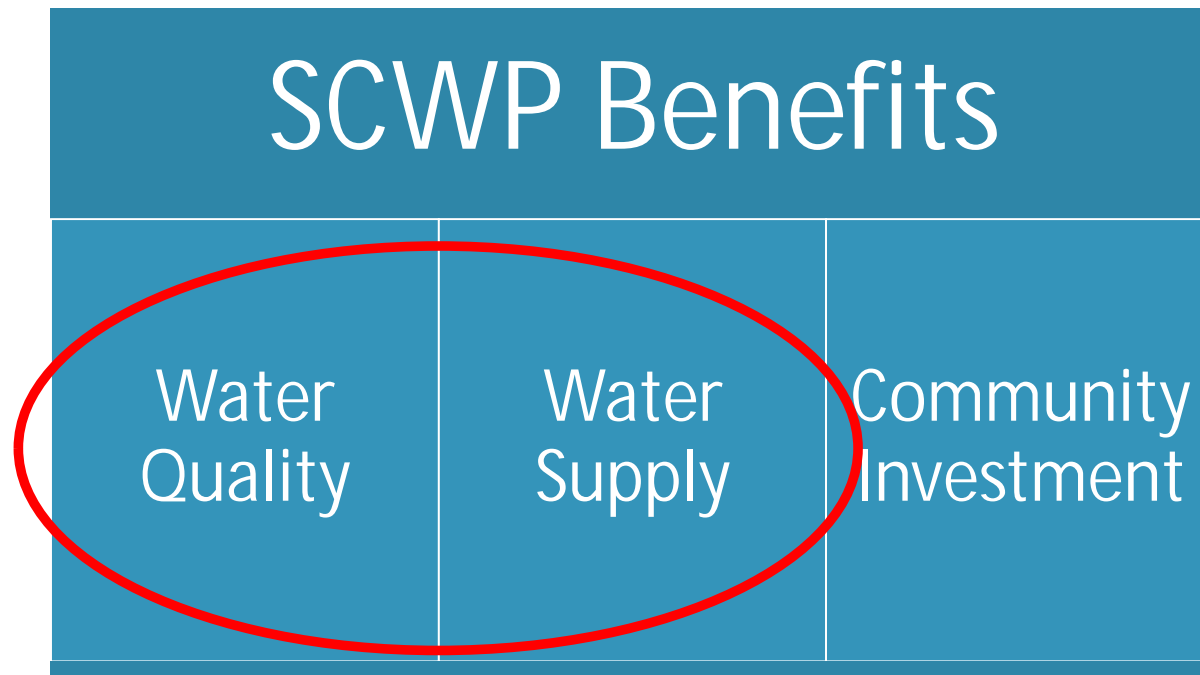
Are being implemented across

47 Municipalities



Understanding Watershed Area Opportunities

- Multiple benefits are sought from SCW Projects
- How to contextualize benefits across all Goals to evaluate Projects and Program success?
- And what metrics and tools can help us plan impactful project opportunities?





Water Quality Benefits

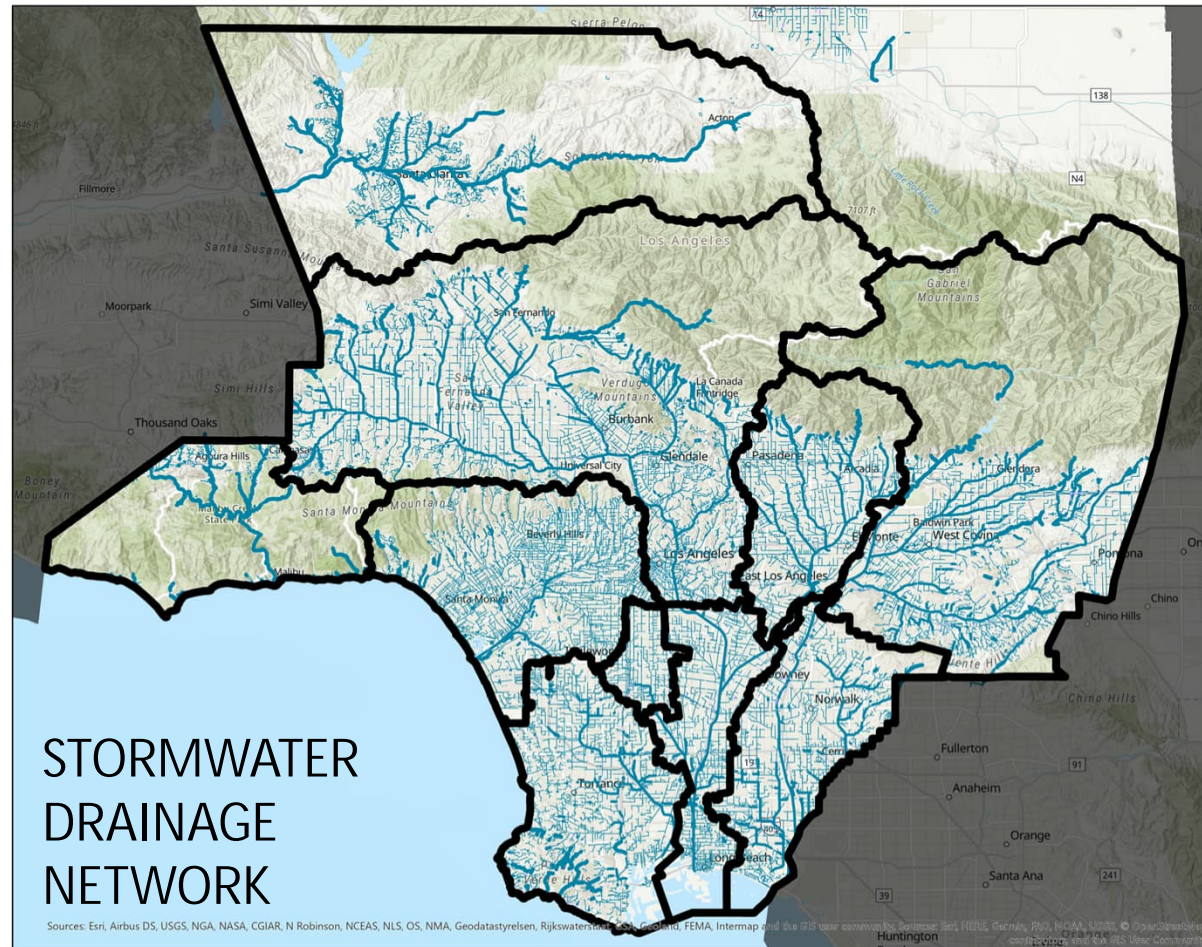
- Cleaner water in our rivers, lakes, and beaches for people and the environment
- Supports healthier habitats and neighborhoods, cleaner water supplies, safer recreation (among other uses)





Water Quality Benefits

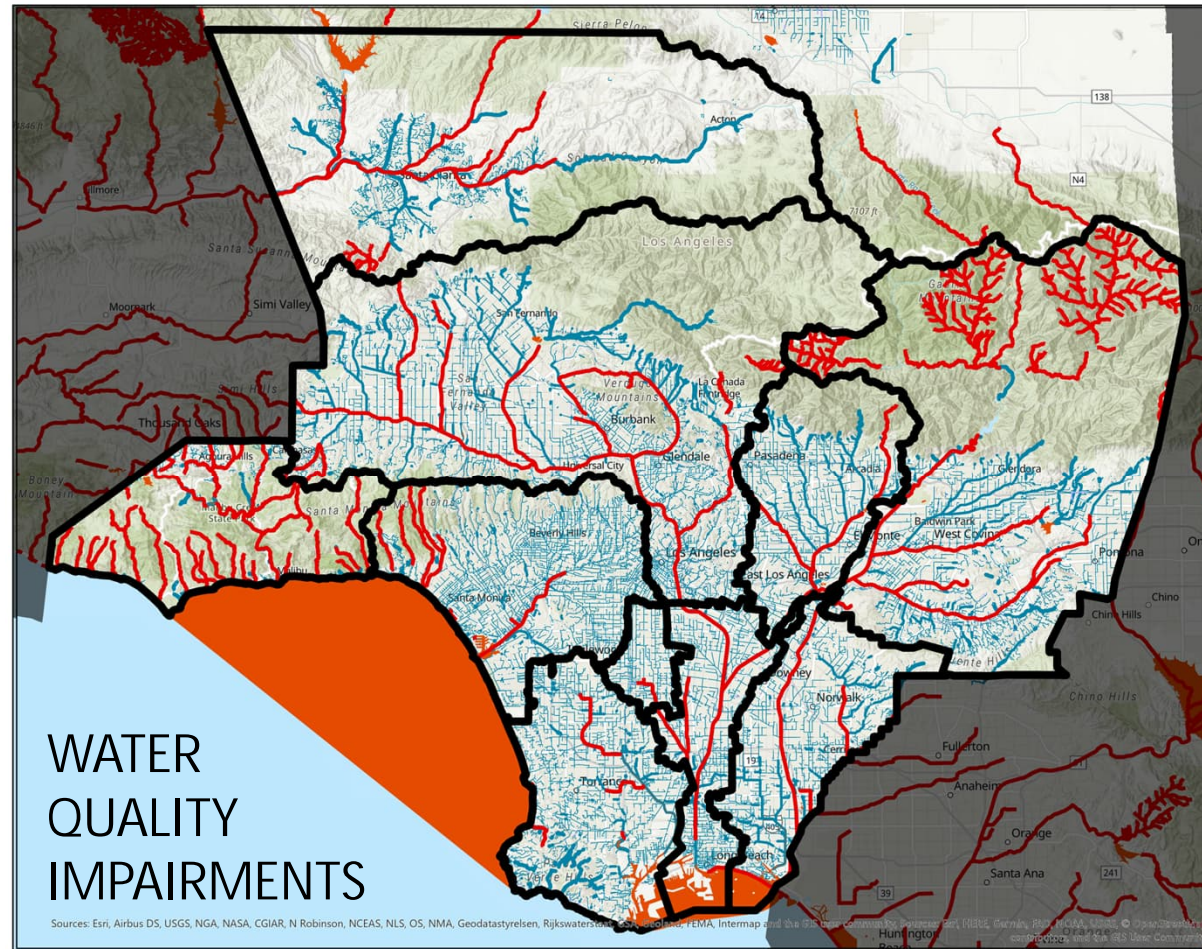
- Each watershed is unique
- Water quality priorities depend on where you are
- Existing plans describe local strategies to address water quality objectives





Water Quality Benefits

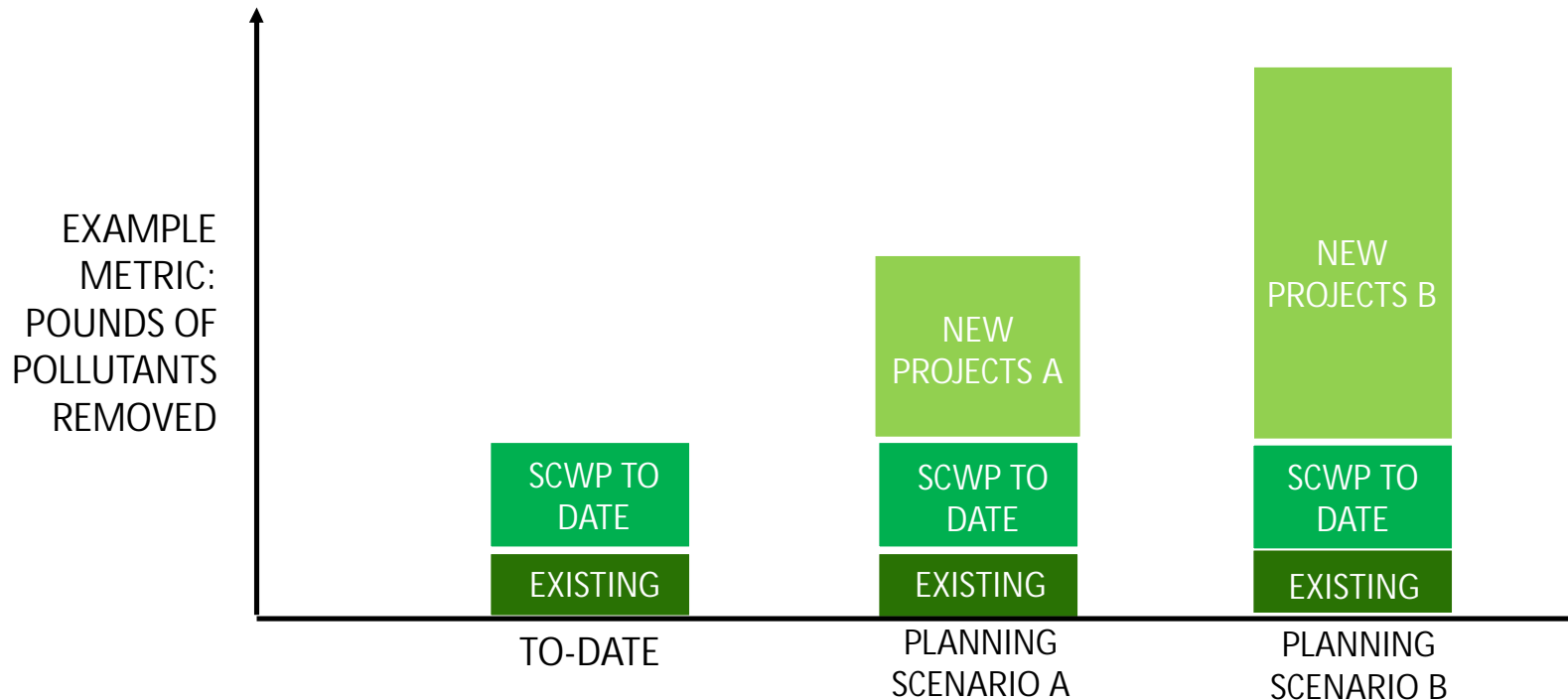
- Each watershed is unique
- Water quality priorities depend on where you are
- Existing plans describe local strategies to address water quality objectives





Water Quality Benefits

- MMS will benchmark potential Water Quality improvements from SCWP projects to better contextualize progress towards local indicators

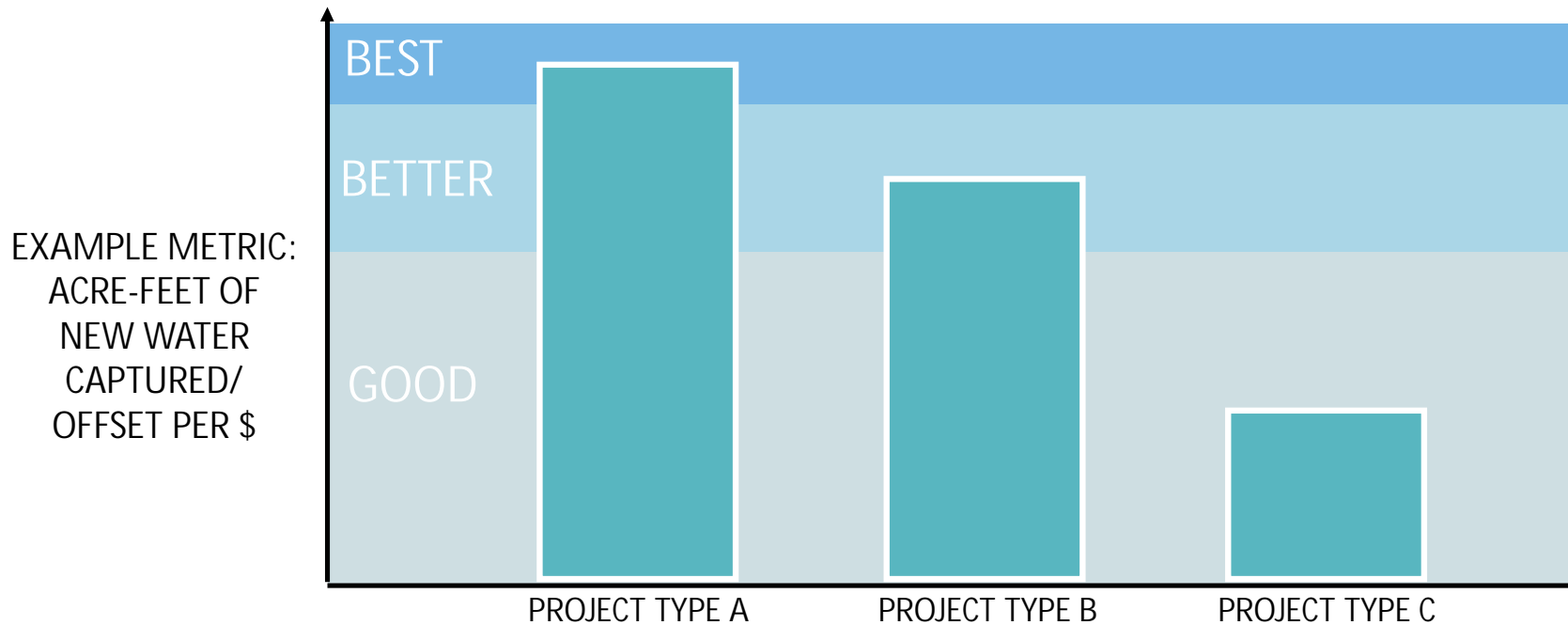


CONCEPTUAL EXAMPLE



Water Supply Benefits

- MMS will analyze potential Water Supply Benefit metrics in each Watershed Area to better understand the portfolio of what may be feasible and cost effective

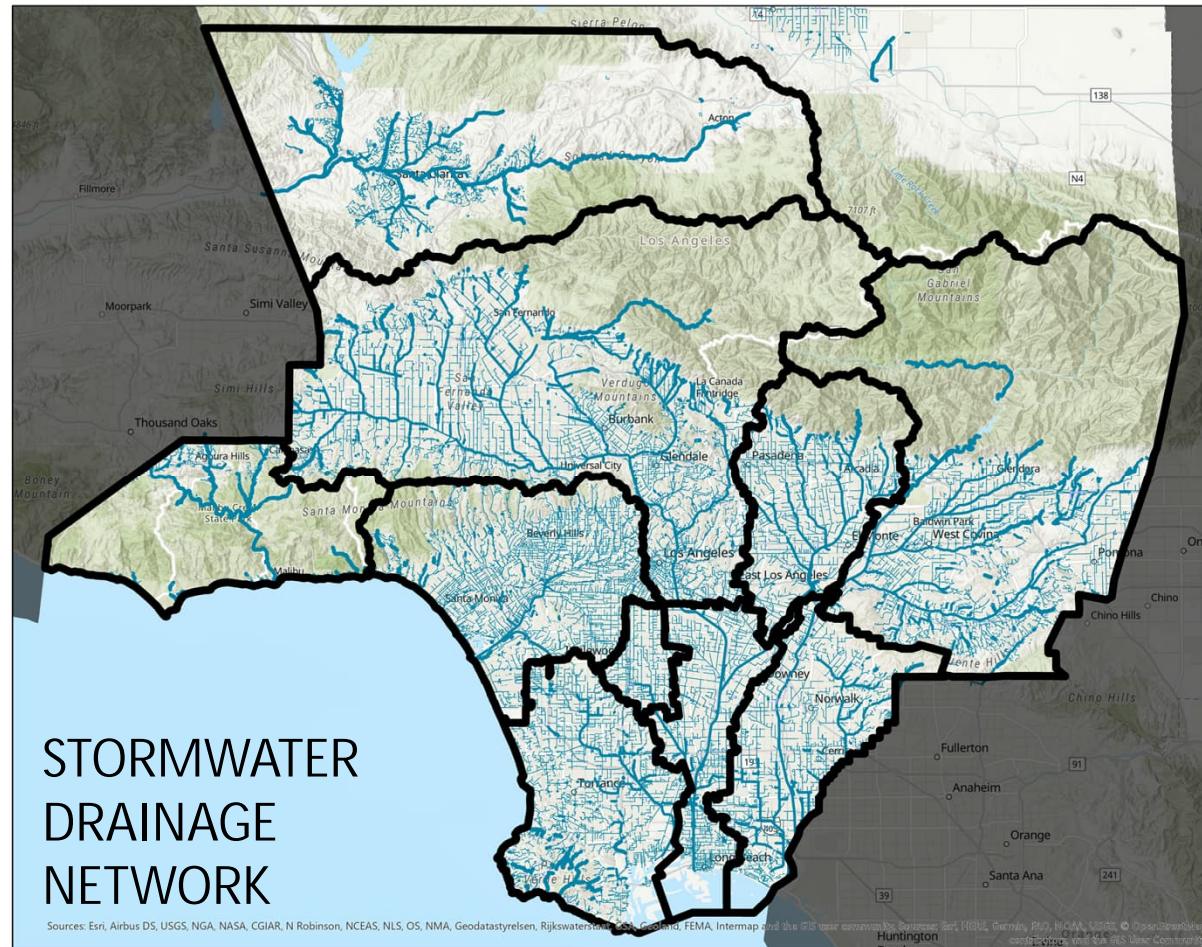


CONCEPTUAL EXAMPLE



Assessing Watershed Opportunities for Water Quality & Supply

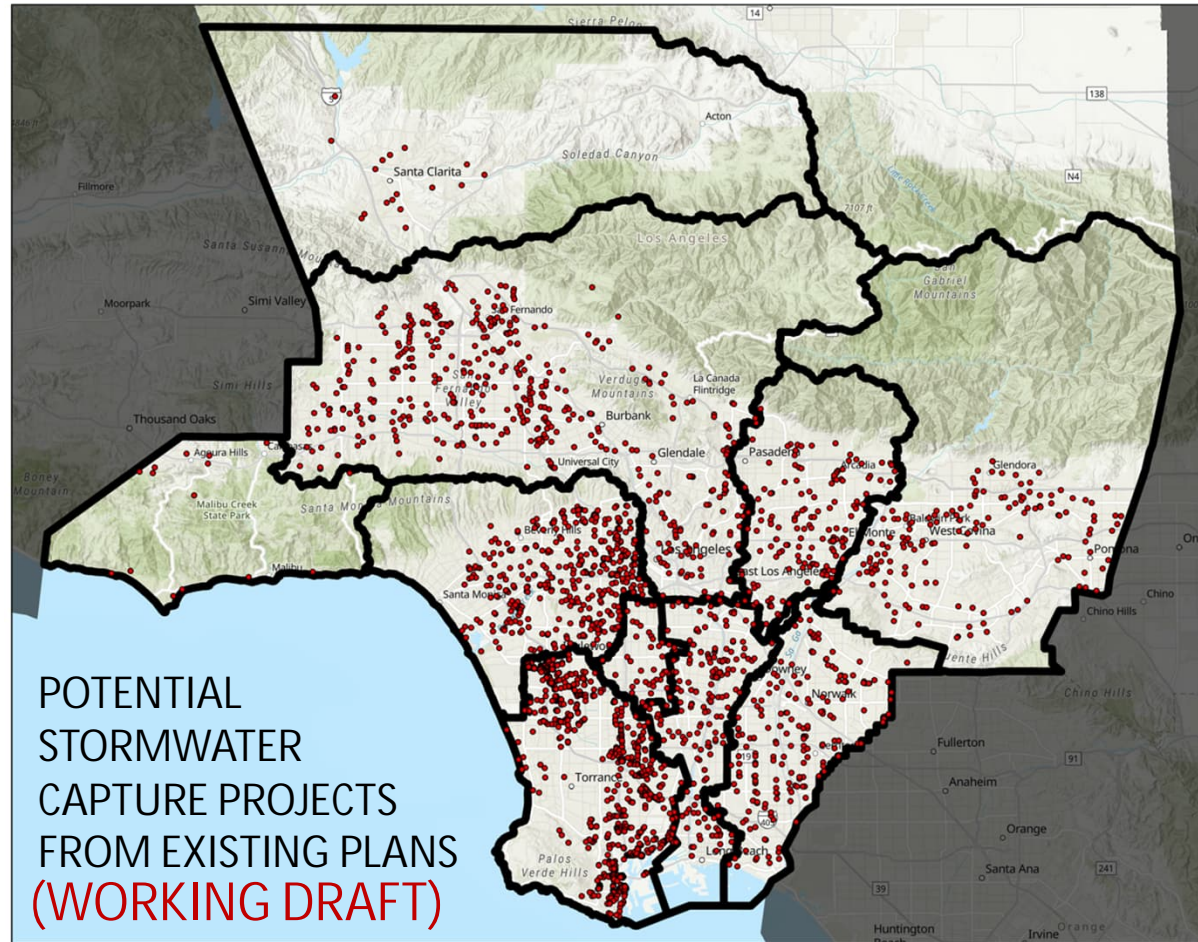
- Where do we start?





Assessing Watershed Opportunities for Water Quality & Supply

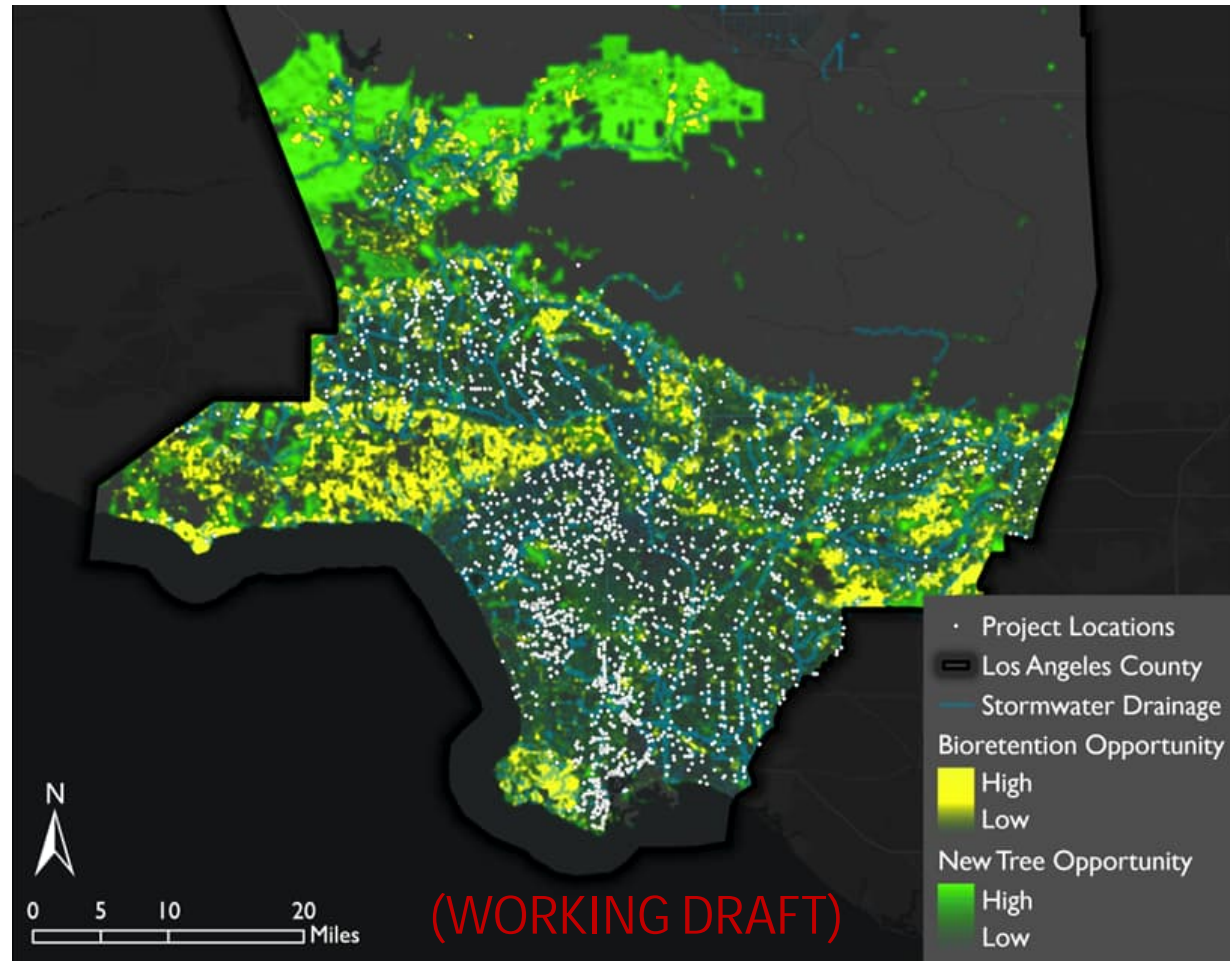
- Where do we start?
 1. Gather project opportunities from existing plans





Assessing Watershed Opportunities for Water Quality & Supply

- Where do we start?
 1. Gather project opportunities from existing plans
 2. Assess gaps for project opportunity areas

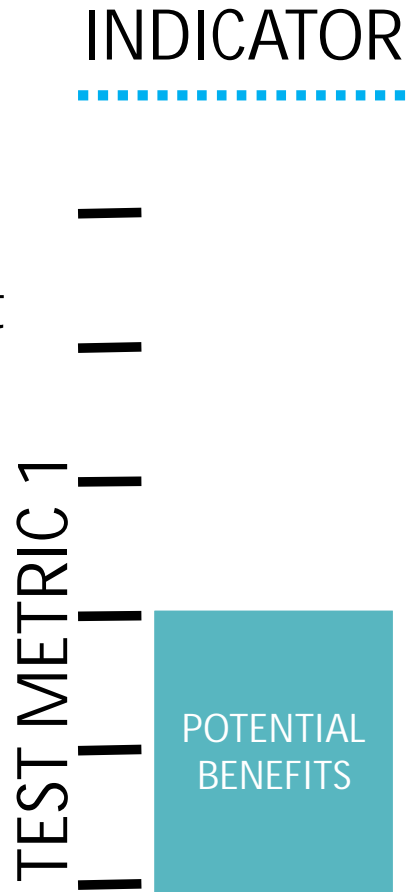




Assessing Watershed Opportunities for Water Quality & Supply

- Where do we start?

1. Gather project opportunities from existing plans
2. Assess gaps for project opportunity areas
3. Test metrics and estimate potential benefits

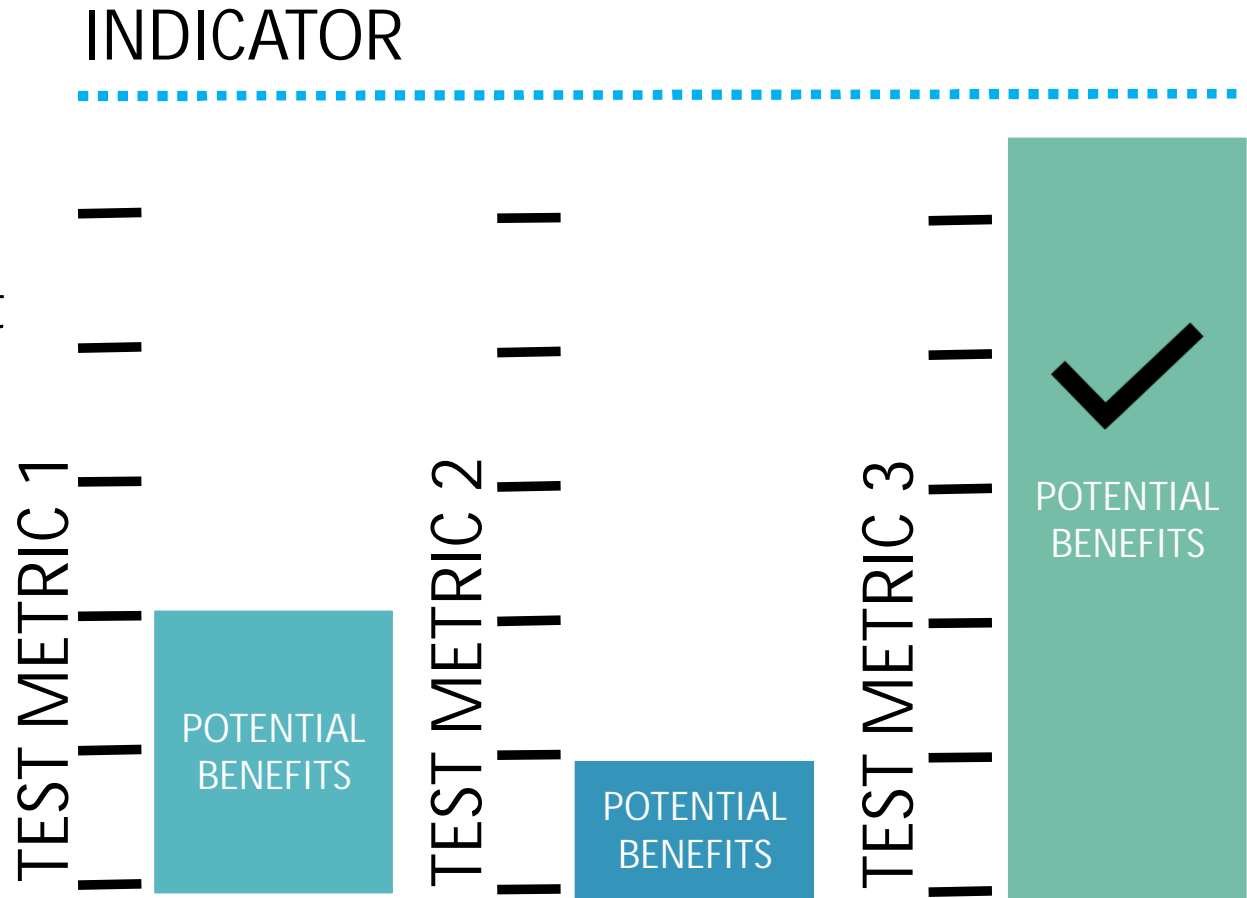




Assessing Watershed Opportunities for Water Quality & Supply

- Where do we start?

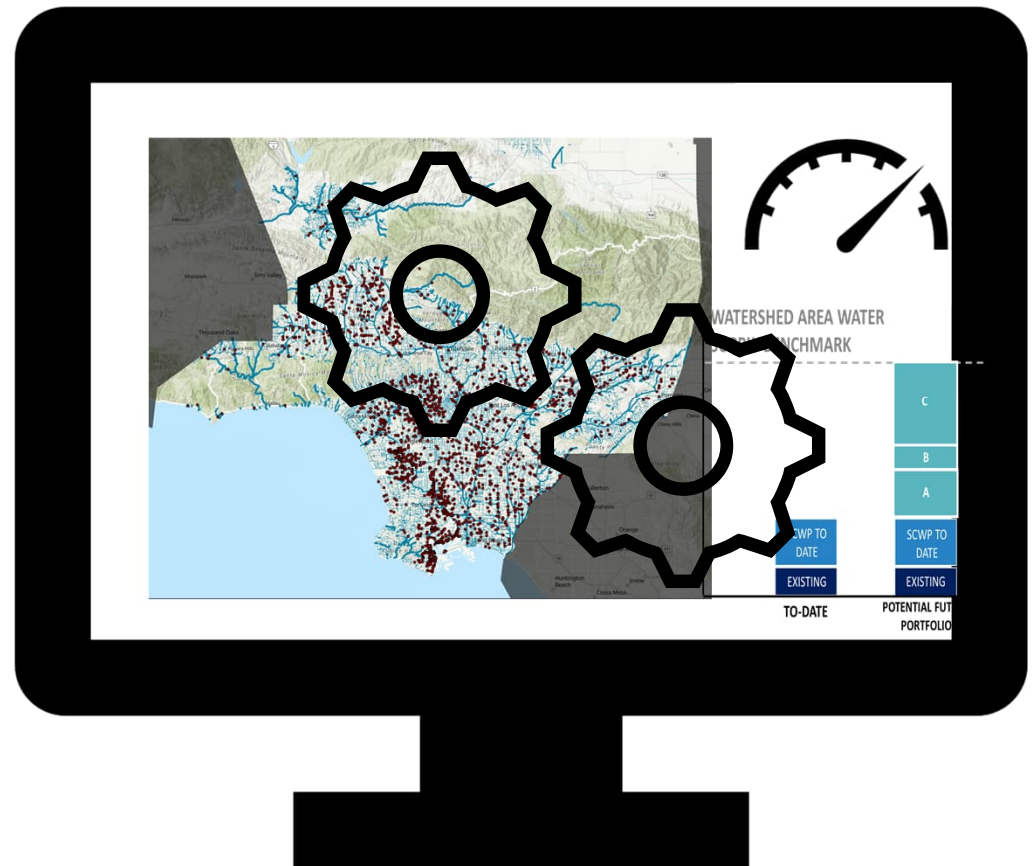
1. Gather project opportunities from existing plans
2. Assess gaps for project opportunity areas
3. Test metrics and estimate potential benefits
4. Iterate, engage, adapt





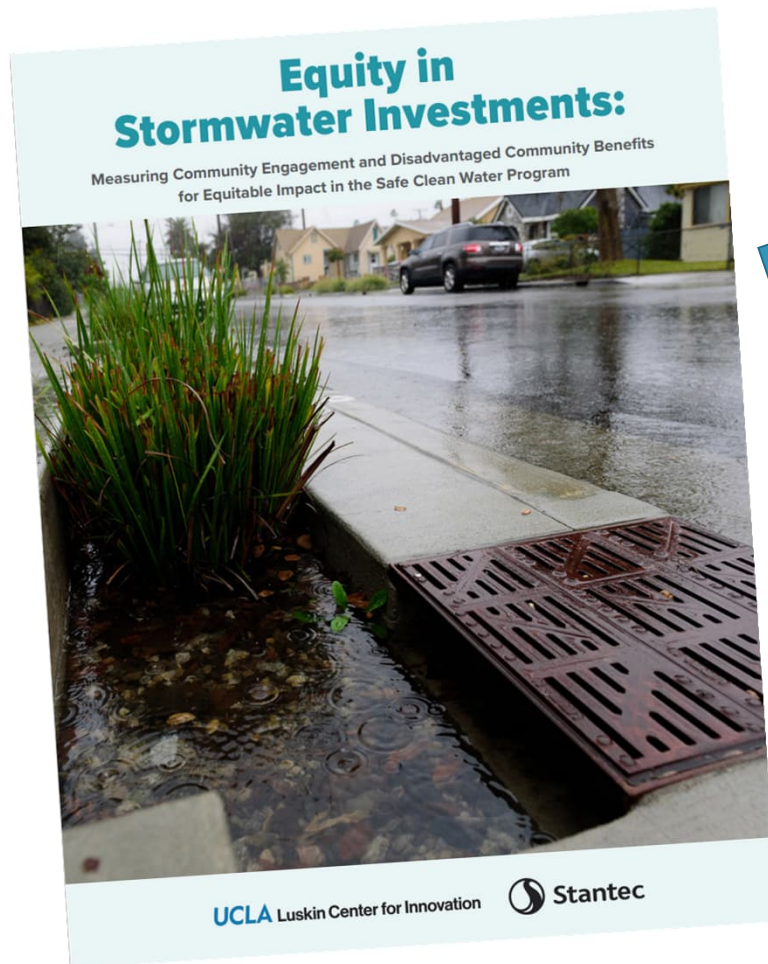
Assessing Watershed Opportunities for Water Quality & Supply

- Where do we start?
 1. Gather project opportunities from existing plans
 2. Assess gaps for project opportunity areas
 3. Test metrics and estimate potential benefits
 4. Iterate, engage, adapt
 5. Develop guides and tracking tools to help communities, SCWP decision-makers, and project developers





Hearing and documenting community voice



Tools and Metrics for Measuring Community Needs, Strengths, and Preferences

Are a project's benefits **based on data about needs?** And are they **recognized by the community?**

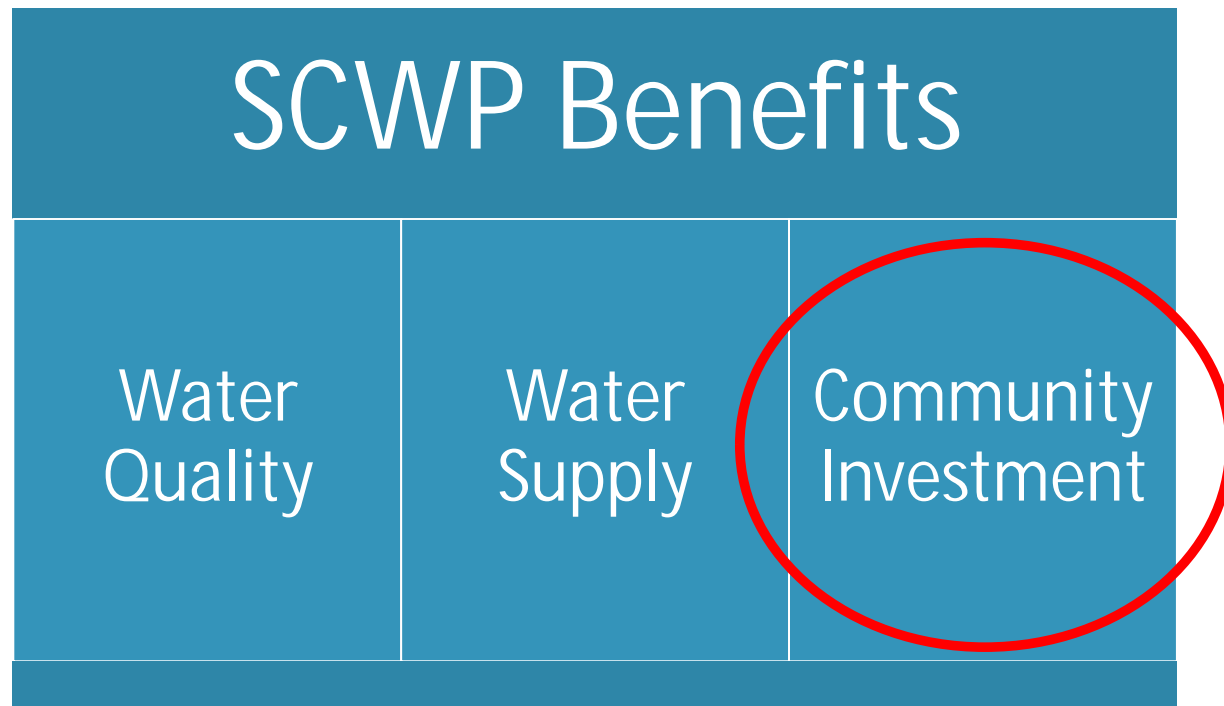
Authorship: Gregory Pierce, Jon Christensen, Mike Antos, Peter Roquemore, Hayat Rasul, Estefany Garcia



Hearing and documenting community voice

Are a project's benefits **based on data about needs?** And are they **recognized by the community?**

- In SCWP, three types of benefits are sought from the projects being built, in all communities:





Hearing and documenting community voice

Are a project's benefits **based on data about needs?** And are they **recognized by the community?**

"Community Investment Benefit" means a benefit created in conjunction with a Project or Program, **such as, but not limited to:**

- improved flood management, flood conveyance, or flood risk mitigation;
- creation, enhancement or restoration of parks, habitat or wetlands;
- improved public access to waterways;
- enhanced or new recreational opportunities;
- and greening of schools.

A Community Investment Benefit also includes a benefit to the community derived from a Project or Program that

- improves public health by reducing heat island effect and increasing shade or
- planting of trees or other vegetation that increase carbon reduction/sequestration and improve air quality.

LA Flood Control District Code Chapter 16.03(F) Definitions
(bullets and highlight added)



Hearing and documenting community voice

Are a project's benefits **based on data about needs?** And are they **recognized by the community?**

"Community Investment Benefit" means a benefit created in conjunction with a Project or Program, **such as, but not limited to:**

- improved flood management, flood conveyance, or flood risk mitigation;
- creation, enhancement or restoration of parks, habitat or wetlands;
- improved public access to waterways;
- enhanced or new recreational opportunities;
- and greening of schools.

A Community Investment Benefit also includes a benefit to the community derived from a Project or Program that

- improves public health by reducing heat island effect and increasing shade or
- planting of trees or other vegetation that increase carbon reduction/sequestration and improve air quality.

Tools and Metrics for Measuring Community Needs, Strengths, and Preferences

LA Flood Control District Code Chapter 16.03(F) Definitions (bullets and highlight added)



Hearing and documenting community voice

- Disadvantaged and Tribal Community Involvement Program
 - Funding from Proposition 1 (2014) via California Department of Water Resources.
 - A program of the Greater Los Angeles County, and Upper Santa Clara River Regional Water Management Groups

“To ensure the involvement of [members of] disadvantaged communities, economically distressed areas, and unrepresented communities...”





Hearing and documenting community voice

Major Components



COMMUNITY ENGAGEMENT

Occurs throughout all components.

STRENGTHS & NEEDS ASSESSMENT

Listening sessions;
formal needs
assessment of
institutions and
community

PROJECT & PROGRAM DEVELOPMENT

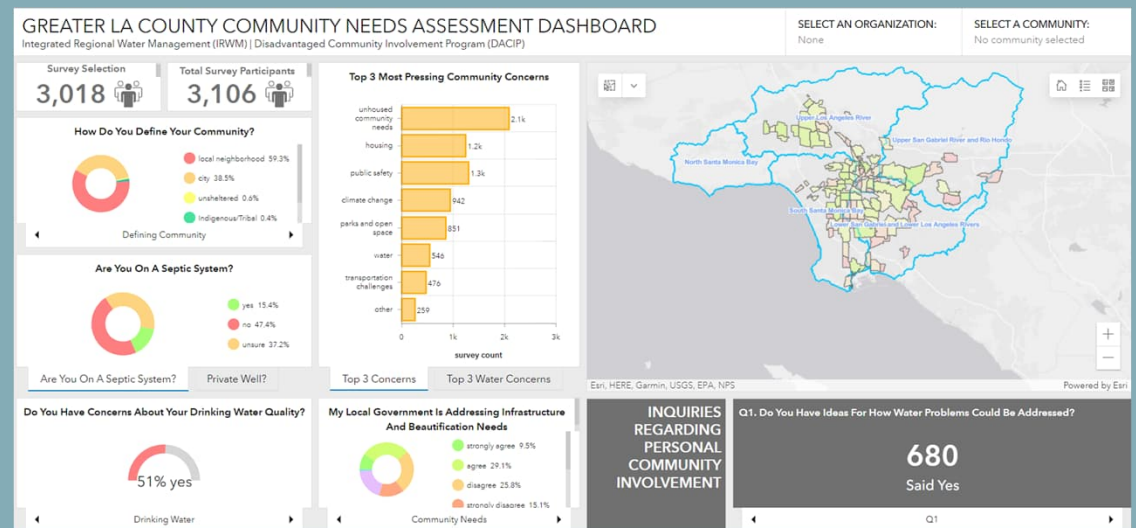
Projects & Programs
conceptualized &
developed based on
community needs and
strengths



Strengths & Needs Assessment



- ▶ September 15, 2020 - June 15, 2021
- ▶ 3,100 Surveys reflecting 104 WaterTalks communities
- ▶ 29 Community Listening Sessions
- ▶ 6 Tribal Listening Sessions
- ▶ 31 Institutional Interviews
- ▶ 300,000 people reached
- ▶ Survey viewable at www.watertalks.la; closed June 30, 2022



<https://www.redesign.la/dacip>



Strengths & Needs Assessment



CITY NEEDS ASSESSMENT DASHBOARD

ded Community Involvement Program (DACIP)

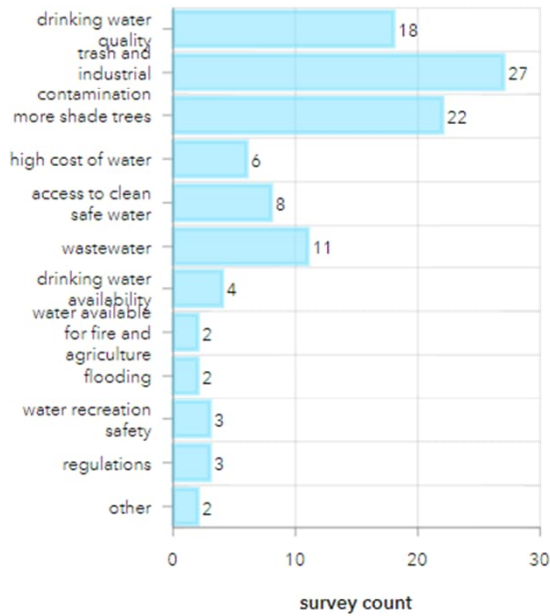
SELECT AN ORGANIZATION:

None

SELECT A COMMUNITY:

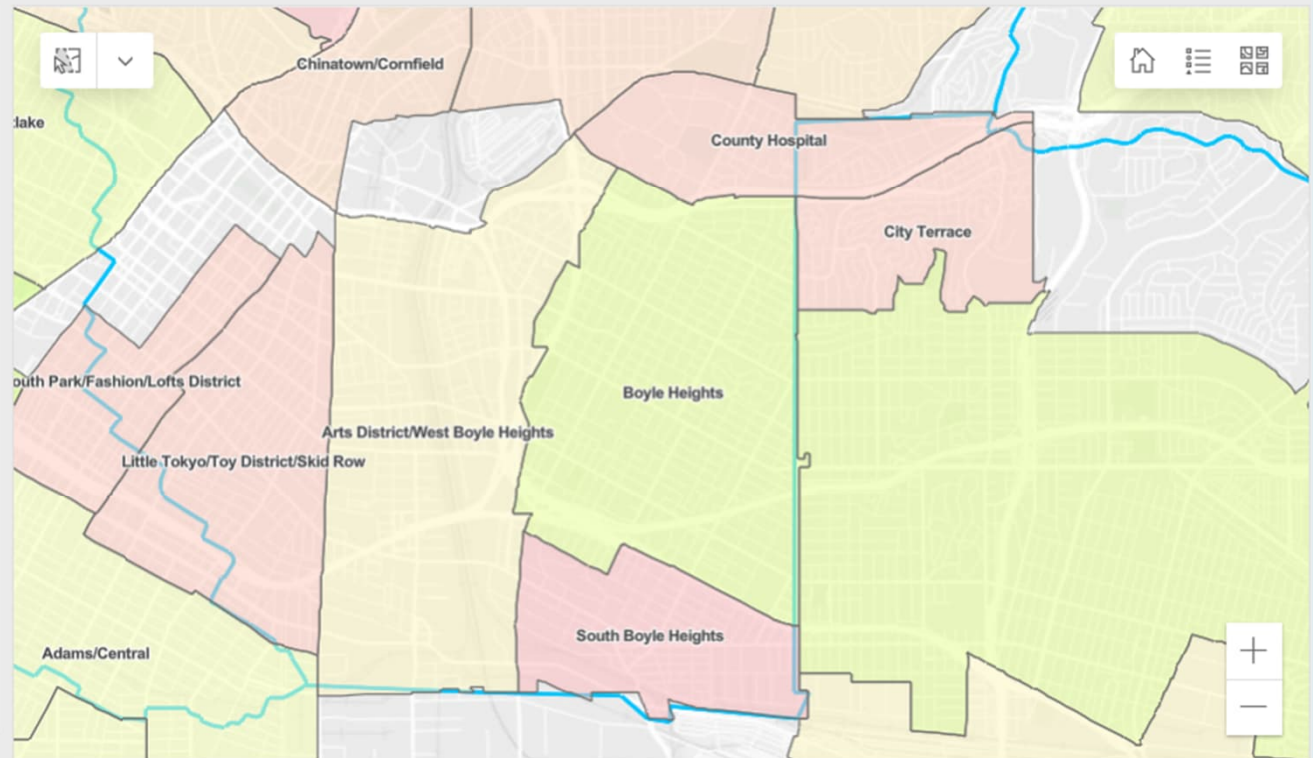
Boyle Heights

Top 3 Water-Related Concerns Within Communities



Top 3 Concerns

Top 3 Water Concerns



County of Los Angeles, Bureau of Land Management, Esri, HERE, Garmin, GeoTechnologies, Inc., USGS, EPA

Powered by Esri



Next Steps for MMS, and your feedback!

- Investigating the usefulness of a tool like what was created for WaterTalks
 - Holding and sharing spatial community contributions of challenges to overcome, opportunities to take, and strengths to reinforce.
 - A map that helps display what people have said.
- Persistently Open and Updateable
- Thinking through ways for data to be gathered or contributed by:
 - Watershed Coordinators, already part of SCWP
 - Cities, Special Districts, Agencies
 - CBO/NGO
- Support for project development, enhancing engagement.



What comes next for the Metrics & Monitoring Study

- The Q&A from these two public workshops
 - Every question will get a written answer, a summary will be posted to the site.
 - Your contributions will influence the ongoing work of the MMS team, and
 - Will be shared with the MMS Stakeholder Advisory Committee at their next meeting
- Status - Metrics and Monitoring Study
 - Two upcoming workshops, January and April of 2023
 - Completion in Summer 2023
 - Early deliverable for Water Supply
- Status - SCWP
 - Mid-year 4 with projects being considered by WASC,
 - Call for projects closing in July
 - Biennial review
- As always email at SafeCleanWaterLA@pw.lacounty.gov



Thank you!