

Central Santa Monica Bay Watershed Area Steering Committee (WASC) Meeting Minutes



Tuesday, October 25, 2022
10:00am - 12:00pm
WebEx Meeting

Committee Members Present:

Cung Nguyen, LA County Flood Control District (Agency)
*Art Castro, LA City Department of Water and Power (Agency)
Sheila Brice, LA City Sanitation and Environment (Agency)
*Darryl Ford, LA City Recreation & Parks (Agency)
Rita Kampalath, LA County Chief Sustainability Office (Community), Vice-Chair
*Gloria Medina, The Solutions Project/SCOPE (Community)
*Maggie Gardner, LA Waterkeeper (Community)
*Matthew Magener, West Hollywood (Municipal)
Sean Singletary, Culver City (Municipal)
Roberto Perez, Los Angeles (Municipal)
Susie Santilena, Los Angeles (Municipal), Chair
Bruce Hamamoto, Los Angeles County (Municipal)
Curtis Castle, Santa Monica (Municipal)
Rafael Prieto, Los Angeles (Municipal)
Michelle Struthers, SGA Marketing (Watershed Coordinator, non-voting member)
Mikaela Randolph, Heal the Bay (Watershed Coordinator, non-voting member)

*Committee Member Alternate

Committee Members Not Present:

E.J. Caldwell, West Basin Metropolitan Water District (Agency)
Alysen Weiland, PSOMAS (Community)
Edgar Campos, T.R.U.S.T. South LA (Community)

See attached sign-in sheet for full list of attendees.

1. Welcome and Introductions

District Staff conducted a brief tutorial on WebEx. Susie Santilena, Chair of the Central Santa Monica Bay (CSMB) WASC, welcomed Committee Members and called the meeting to order.

District Staff facilitated the roll call of Committee Members. All Committee Members made self-introductions and a quorum was established.

2. Approval of Meeting Minutes from September 27, 2022

Member Gardner made a motion to approve the meeting minutes with grammatical edits from Member Nguyen. The motion was seconded by Member Castle. The Committee voted to approve the September 27, 2022 minutes with edits, with 9 votes in favor and 4 votes in abstention (approved, see vote tracking sheet attached).

Central Santa Monica Bay Watershed Area Steering Committee (WASC) Meeting Minutes



3. Committee Member and District Updates

District Staff provided an update, noting:

- On October 18, 2022, the Board of Supervisors (Board) voted to continue meeting virtually, acting under the authority of Assembly Bill 361 which authorizes public committees to meet without complying with all the teleconferencing requirements of the Brown Act. The Board is reviewing its position every 30 days. If the Board decides to no longer approve findings to continue teleconferencing meetings under AB 361, the WASC has the authority to make their own AB 361 findings. District staff will provide additional guidance as needed.
- On October 4, 2022, the Board of Supervisors approved funding for all nine Stormwater Investment Plans (SIPs). The approved Board letter is available on the Safe, Clean Water Program (SCWP) website under the resources drop down menu. Project Managers of continuing projects from previous years will need to execute Addendums for Fiscal Year 2022-2023 (FY22-23).
- The Round 4 project deadline was July 31. Scoring Committee reviews began on October 6. The Scoring Committee will score CSMB Infrastructure Projects (IP) projects on November 3. The full scoring schedule can be found on the SCWP website [here](#).
- FY21-22 Q4 Quarterly Reports for IP and Scientific Study (SS) projects were due August 15, and past-due reports must still be completed even if no project activities have occurred. A summary of FY21-22 Q3 and Q4 Quarterly Reports will be discussed at a future meeting. The FY22-23 Q1 and Q2 Quarterly Reports for both Round 1 and Round 2 projects will be discussed in early 2023.
- FY22-23 Q1 Quarterly Reports for IP and SS projects will be due on November 14.
- Attending meetings regularly is a requirement for WASC members under Article 5 of the WASC Operating Guidelines. An absence of two consecutive meetings or more than five meetings in one year will be considered failure to attend meetings and may result in the absentee member's removal from the WASC. If attendance by the Primary Member is not possible for a particular meeting, it is requested that the Alternate Member be present at the meeting.
- Every Committee Member is required to fill out Form 700. A Form 700 is required when a member is assuming office for the first time (part of the onboarding process), continuing to serve on a committee (annual requirement), leaving a committee (part of the offboarding process), or changing roles within the committee. District Staff will contact individuals who need to fill out these forms.

Member Gloria Medina asked District staff if there was any policy regarding an Alternate Member regularly attending the meetings instead of the Primary. District staff will investigate this but does not see an issue.

4. Watershed Coordinator Updates

The Watershed Coordinators presented a project case study, a summary on the Parks Needs Assessment, guidance on project labor agreements, and other general updates. The presentation slides are available on the SCW website and attached.

Chair Santilena asked how it was determined that the City would take on the assumption of liability in the case study. Member Sean Singletary replied that the project location is in the public right of way and captures flow from the private partner's property. Therefore, the City would take on the bulk of the liability.

Central Santa Monica Bay Watershed Area Steering Committee (WASC) Meeting Minutes



5. Public Comment Period

District Staff compiled all public comment cards received by 5:00pm the day before the meeting. No comment cards were received before the meeting. There were no public comments made during the meeting.

6. Discussion

a) Ex Parte Communication Disclosure

As a part of Our Water LA, Member Gardner disclosed conversations that generally cover projects that are discussed at this meeting.

b) [Regional Program Quarterly Reporting Summary FY21-22 Q1 \(July – September\) and Q2 \(October – December\)](#)

District staff demonstrated how to access the Quarterly Reports through the SCWP website by going to the reporting map and filtering for IP, funding year, and watershed area. Quarterly Reports are also accessible by clicking the project name in the reporting dashboard.

District staff showed the Reporting Summary on screen. Chair Santilena invited project developers with concerns flagged in red to comment.

i. **Beverly Hills Burton Way Green Street and Water Efficient Landscape**

Developer: Beverly Hills

Katie Harrel from Culver City, while not the project developer, helped with the project design and notified the WASC that this project is in the construction phase. Representatives from Beverly Hills were not available.

ii. **Culver City Mesmer Low Flow Diversion**

Developer: Culver City

Member Singletary spoke about the two Culver City projects. At the time these Quarterly Reports were submitted, the project's operation and maintenance manuals were not finalized but are now close to being submitted and they do not anticipate any delays. There was an issue with state permits that delayed construction to next April (after the rainy season) when the project can access Centinela Creek again.

iii. **Ladera Park Stormwater Improvements**

Developer: Los Angeles County Public Works

Member Bruce Hamamoto shared that construction is complete and addressing some challenges related to the stormwater harvesting system. An invitation to visit the site in early December will be sent to the WASC members.

iv. **MacArthur Lake Rehabilitation**

Developer: City of Los Angeles Sanitation and Environment

This project had no concerns flagged in the Reporting Summary and was not discussed.

v. **Monteith Park and View Park Green Alley Stormwater Improvements**

Developer: Los Angeles County Public Works

Central Santa Monica Bay Watershed Area Steering Committee (WASC) Meeting Minutes



There are no activity concerns flagged for this project, but Member Hamamoto noted that the Board of Supervisors approved this project earlier in the month. Bidding will occur soon, and they are expected to start construction in early 2023.

vi. Sustainable Water Infrastructure Project

Developer: Santa Monica

Member Castle gave an update for this project, explaining that this design build project is nearing the end of construction and will be online in early 2023. Regarding the budget modification concerns flagged in the summary, final accounting is most likely occurring because the funding package has a lot of different funding sources. Member Castle will discuss with the construction team to provide any cost modification information to the County.

vii. Washington Boulevard Stormwater and Urban Runoff Diversion

Developer: Culver City

Member Singletary noted that the project developers responded to citizen concerns regarding traffic impact and made some slight design adjustments, including landscaped media. This has pushed the bid process out, with construction planned in early 2023.

c) Scientific Study Program (SS) Presentation:

i. [Regional Pathogen Reduction Study](#)

Gateway Water Management Authority

Presenter: Richard Watson / Richard Watson and Associates

Richard Watson was not available to present. This agenda item will be covered in the next meeting.

d) Technical Resources Program (TRP) Presentation:

i. [Hollywood Bowl Stormwater Quality Improvement and Sustainability Project](#)

Hollywood Bowl Operations

Presenter: Laura Connelly, Elaine Nesbit, Mike Rudd

Laura Connelly (General Manager of Hollywood Bowl) presented an overview for the project. Elaine Nesbit (Project Manager) presented the goals and implementation strategies. Mike Rudd (Civil Engineer, Geosyntec) presented project details and stormwater components. The project is requesting \$300,000 to conduct a Feasibility Study through the TRP.

Watershed Coordinator Michelle Struthers asked about the anticipated drainage area and acreage being treated. Rudd responded that around 15 acre-feet of runoff is planned for infiltration. The project site is 80 acres, but the main stormwater components will be in the parking lot and access roads, which total approximately 20 acres.

7. Public Comment Period

There were no public comments.

8. Voting Items

There were no voting items.

9. Items for Next Agenda

Central Santa Monica Bay Watershed Area Steering Committee (WASC) Meeting Minutes



Members of the Committee requested District staff identify an alternate date due to the next scheduled meeting's proximity to the Thanksgiving holiday. District staff will send out a poll to Committee Members to determine a suitable meeting date in early December. See the SCWP website for meeting details. Topics on the next Agenda include:

- a) Findings to Continue Teleconference Meetings under Assembly Bill 361 (if needed)

This will be a standing agenda item and voting may be skipped if the Board of Supervisors approves AB 361. If the Board does not approve AB 361, the Committee members will vote whether to continue teleconferencing.

- b) FY 23-24 Infrastructure Program (IP) Presentations

Chair Santilena requested District staff add the SS presentation to the agenda for the next meeting.

District staff reminded the Committee that the Scoring Committee will be scoring the CSMB IP projects on November 3.

10. Adjournment

Chair Santilena thanked WASC members and the public for their attendance and participation and adjourned the meeting.

CENTRAL SANTA MONICA BAY WASC MEETING - October 25, 2022

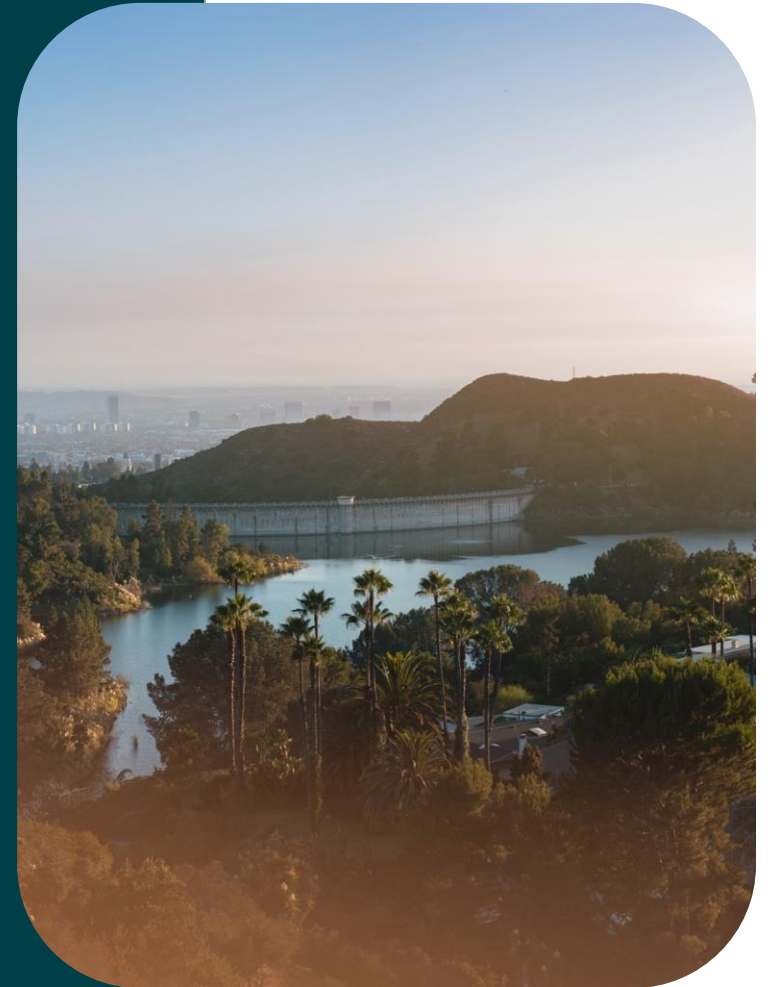
		Quorum Present				Voting Items
Member Type	Organization	Member	Voting?	Alternate	Voting?	9/27/2022 Meeting Minutes with edit
Agency	Los Angeles County Flood Control District	Cung Nguyen	X	Mark Beltran		A
Agency	West Basin Metropolitan Water District	E.J. Caldwell				
Agency	Los Angeles City Water & Power	Delon Kwan		Art Castro	X	Y
Agency	Los Angeles City Sanitation and Environment	Sheila Brice	X	Hubertus Cox		Y
Agency	Los Angeles City Recreation & Parks	Cathie Santo Domingo		Darryl Ford	X	Y
Community Stakeholder	Los Angeles County Chief Sustainability Office	Rita Kampalath	X	Kristen Pawling		Y
Community Stakeholder	PSOMAS / Business Sector	Alysen Weiland				
Community Stakeholder	The Solutions Project / SCOPE	Gloria Walton		Gloria Medina	X	A
Community Stakeholder	Los Angeles Waterkeeper	Bruce Reznik		Maggie Gardner	X	Y
Community Stakeholder	T.R.U.S.T. South LA	Edgar Campos				
Municipal Members	Beverly Hills / West Hollywood	Josette Descalzo		Matthew Magener	X	Y
Municipal Members	Culver City	Sean Singletery	X	Yanni Demitri		Y
Municipal Members	Los Angeles	Roberto Perez	X			A
Municipal Members	Los Angeles	Rafael Prieto	X			Not Present
Municipal Members	Los Angeles	Susie Santilena	X	Ryan Jackson		Y
Municipal Members	Los Angeles County	Bruce Hamamoto	X	Geremew Amenu		A
Municipal Members	Santa Monica	Curtis Castle	X	Selim Eren		Y
Watershed Coordinator	Heal the Bay	Mikaela Randolph	X			N/A
Watershed Coordinator	S. Groner Associates	Michelle Struthers	X			N/A
Total Non-Vacant Seats		17			Yay (Y)	9
Total Voting Members Present		14			Nay (N)	0
Agency		4			Abstain (A)	4
Community Stakeholder		3			Total	13
Municipal Members		7				Approved

Other Attendees
Alfredo Magallanes
brett perry
Carmen Andrade
Conor Mossavi
Cynthia Jackson
Daniel Rydberg
Demitri Yanni
Elaine Nesbit
Geosyntec Consultants Rudd
Geremew Amenu
Jesse De La Cruz
Jonathan Weiss
Joyce Amaro
Katie Harrel
Laura Connelly
MARISOL IBARRA
Marisol Serrano
Mark Ladd
Mark Nguyen
Mike Rudd
Paige Bistromowitz
Serena Zhu
Thomas Lee
Tom Waldron
wendy Dinh

CENTRAL SANTA MONICA BAY

Watershed Coordinators Presentation

October 2022



SAFE
CLEAN
WATER

sga
MARKETING

AGENDA

Public-Private Partnerships Case Study
Washington Blvd Project

LA County Parks Needs Assessment Plus

Quick Resources

Project Labor Agreements

Redesign LA Funding Database

The background of the slide is a deep blue underwater scene. Sunlight rays penetrate from the top right, creating a shimmering effect. Numerous bubbles of various sizes are scattered throughout the water, with two larger, more prominent bubbles in the upper center. The overall atmosphere is serene and clean, suggesting water and nature.

PUBLIC-PRIVATE PARTNERSHIPS CASE STUDY

WASHINGTON BLVD PROJECT

INFRASTRUCTURE PROJECT EXAMPLE

Washington Boulevard Stormwater and Urban Runoff Diversion Project

Water capture and sanitary sewer diversion project.

FUNDED IN: 2020

SCW FUNDING: \$3.6 Million

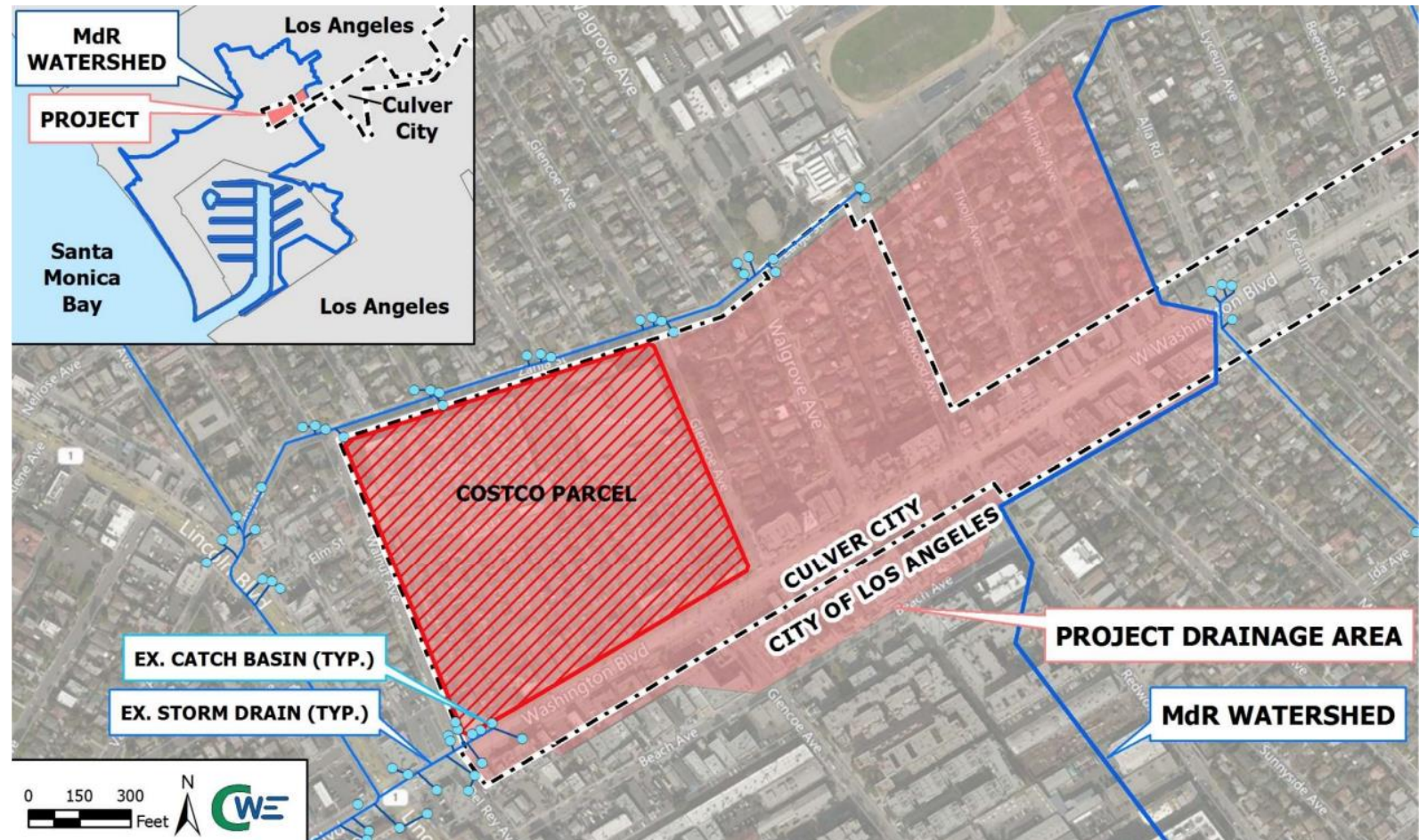
TOTAL COST: \$12 Million

PROJECT LEAD: Culver City

WATERSHED: Central Santa Monica Bay

PROJECT FEATURES:

- Subsurface storage system to capture storm event runoff.
- Dry and wet weather runoff will be diverted to sanitary sewer which will be treated at the Hyperion Water Reclamation Plant.
- Some captured water will be used for median irrigation.



PUBLIC-PRIVATE PROJECT EXAMPLE

Washington Boulevard Stormwater and Urban Runoff Diversion Project

This project was identified in the Marina del Rey EWMP plan as necessary for reducing pollution reaching Marina del Rey.

When Costco, which occupies ~30% of the drainage area, applied for a redevelopment permit, the City saw the opportunity to partner with Costco to implement this project.

Costco's Contribution

- Financially contributed to design, construction, and O&M costs (\$1,345,000).
- Project partially took place on Costco land. **

Costco's Benefits *

- Achieve compliance with NPDES requirements and secure redevelopment permit.
- More cost-effective than implementing their own stormwater project.

Culver City's Contribution

- Takes responsibility for NPDES requirements.
- Implements project.
- Takes on liability.
- Financially contributed to project

Culver City's Benefits

- Got a financial contribution from Costco.
- Gained access to a parcel that captures about 30% of the City's drainage area to MDR.

**

*In this case tax savings was not a significant motivator.

** Actual construction on Costco's property was limited to small area along the sidewalk for an electrical cabinet.

LESSONS LEARNED

Tips for Identifying Public-Private Partnership Opportunities

1. **Identify priority zones** or parcels that could provide key benefits to your area
1. **Set up an internal mechanism** for your permitting office to flag redevelopment projects in priority zones or parcels
1. **Seek out opportunities for mutual benefit.** Engage with property owners on how a partnership makes good business sense for them; municipalities may help address stormwater management requirements, maintain infrastructure, and/or share costs that they'd otherwise handle alone, etc.
 1. Tax savings are probably not significant enough to be a primary motivator
 2. Environmental stewardship may or may not be a significant motivator so don't lead with it





PARKS NEEDS ASSESSMENT FINDINGS

Westside Region

What is the

2022 Parks Needs Assessment Plus (PNA+)?

- Builds on the 2016 LA County Parks Needs Assessment which focused on local park access.
- The PNA+ focuses on:
 - Regional parks and recreation opportunities
 - Rural park access
 - Population vulnerability, environmental benefits, environmental burdens, and priority areas for environmental conservation and restoration.



Westside Regional Study Area

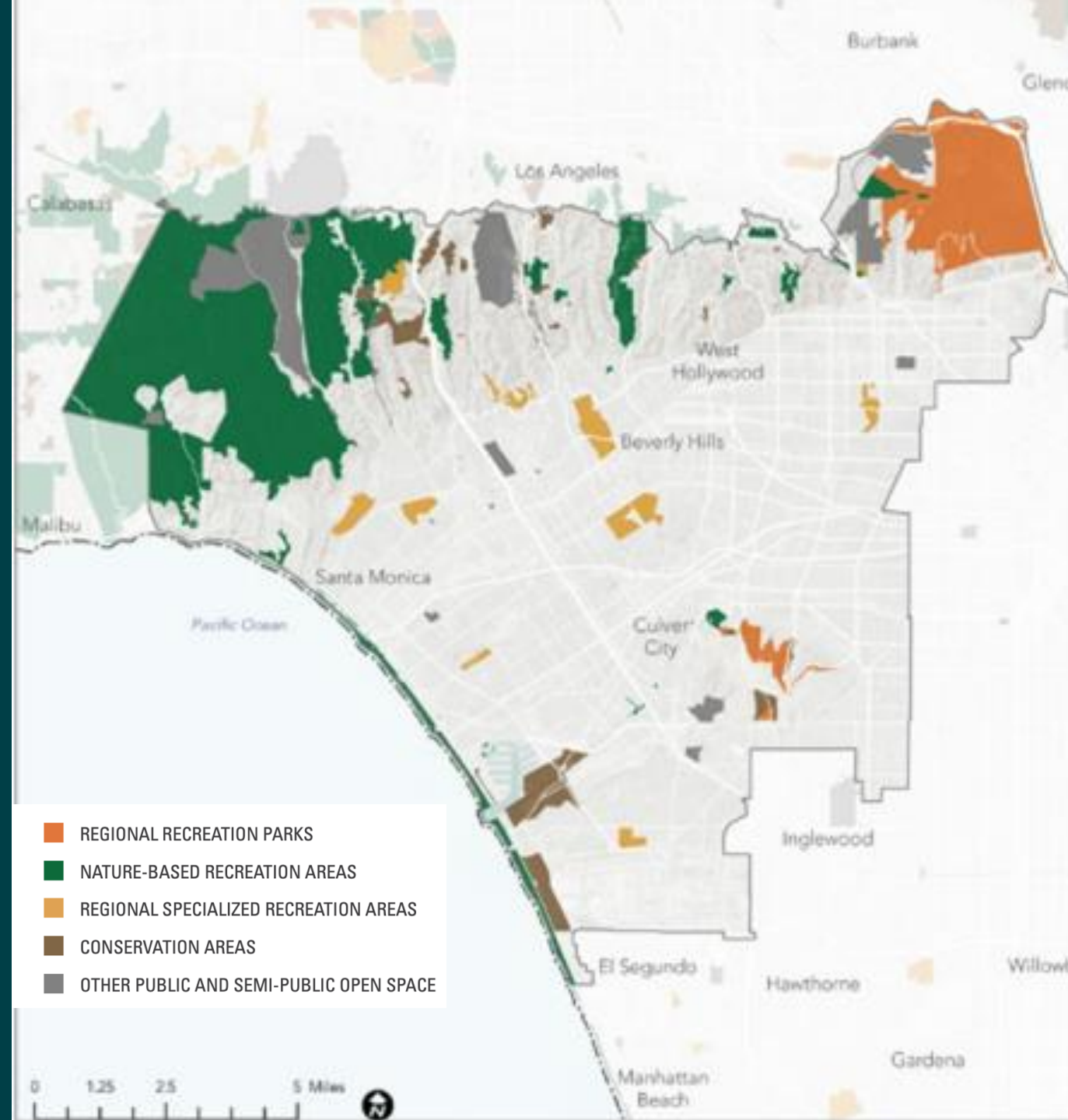
Includes many neighborhoods that comprise the westside of the City of Los Angeles, the cities of Beverly Hills, Culver City, Santa Monica, and West Hollywood, and several unincorporated areas including Franklin Canyon, West Fox Hills, Ladera Heights, View Park, Windsor Hills and Marina del Rey.

24%

Of the Westside Region is comprised of regional parks and open space.

38%

Of LA County is comprised of regional parks and open space.



Regional Findings

ANALYSIS FINDINGS

- » The most vulnerable populations are largely concentrated in the eastern part of the study area, including the Hollywood, Mid City, and Hyde Park neighborhoods.
- » The regional recreation facilities and trails in the area are relatively well served by public transportation due to an extensive transit network.
- » The area's recreation facilities experience a high rate of visitorship concentrated around Griffith Park and the Baldwin Hills parklands, including Kenneth Hahn State Recreation Area.
- » Areas with the highest Regional Recreation Need include neighborhoods surrounding Los Angeles International Airport due to its low visitorship levels and Mid City/Hollywood due to its vulnerable populations.
- » Only a few areas have been identified as priority areas for conservation, such as portions of the Pacific Palisades and Marina Del Rey.
- » Several areas, including West Adams, Westchester, Hollywood, and the Inglewood Oil Field have been identified as priority areas for restoration due to their relatively poor environmental health.
- » The study area only has 0.26 miles of regional trails per 1,000 residents, which is below the countywide average of 0.33.

COMMUNITY ENGAGEMENT THEMES

- » Lack of information, distance, overcrowding and limited park space and programs, safety and limited transit options are identified barriers to park use for residents who live in the study area.
- » Residents say they need more swimming facilities, nature centers, park and green spaces, dedicated use trails, outdoor event and community gathering spaces, and more and affordable programming.
- » Half of survey respondents say they are recreating outside more and 87% are looking to do that closer to home because of COVID.

Regional Survey Findings

Community Suggestions to Increase and Improve Visits to Regional Facilities

“Some bike trails flooded with walkers. Maybe two trails needed in some areas.”

“We need a large regional park on the westside. Space is an issue and will be more difficult in the future. We need to set aside space now.”

“The bike path along Ballona Creek from Del Rey to Marina del Rey is not very safe for pedestrians to walk on.”

“Seniors need more activities.”



MORE SHADE

More shade structures and trees in gathering and playground spaces.



ACCESS TO WATER

Water fountains for users and animals in parks and along trails, more splash pads and water features for cooling off, better access to lakes, and waterways, and restoration of area wetlands.



TRANSIT OPTIONS

Provide free and more frequent transit and shuttles to the beach and to parks.



ADDRESS PARKING AND CONGESTION

Provide incentives for carpooling and review parking options at popular facilities.



ENHANCED SAFETY MEASURES

Provide more patrols on trails and at parks and facilities. Ensure visitors are adhering to social distancing and other protective measures during the pandemic.



ADDRESS HOMELESSNESS

Expand services to support unhoused people who use parks and endanger wildlife habitats.



BETTER ACCESS TO INFORMATION

More information about events at regional parks, available amenities and opportunities to provide input.



IMPROVED SIGNAGE

Provide additional and interactive wayfinding, interpretive and multilingual signage in parks and along trails.



ADA ACCESSIBILITY

Provide wheelchair and disabled accessible trails and facilities, including restrooms.



EXPAND NATIVE AMERICAN ACCESS AND FACILITIES

Provide access to ceremonial spaces for gatherings and events and provide spaces for indigenous-led education centers and activities.



EXPAND COMMUNITY EVENTS

Open up park spaces for the community to hold more events.



IMPROVED MAINTENANCE AND INFRASTRUCTURE

Clean and maintain restrooms, trails and campsites, provide more picnic tables and seating.



ADDITIONAL STAFF

Hire staff that is more representative of the population to guide visitors and maintain trails and parks.



BETTER ACCESS TO PROGRAMS

Improve and standardize the online reservation system, gather community input to improve the variety of recreation classes, and provide affordable equipment and classes for all ages, especially youth and seniors.



MORE RECREATION FACILITIES

Extend facilities hours, provide more restrooms, bike parking, outdoor equipment and gathering spaces, and build additional parks, courts, sports fields, and walking/jogging trails.



EXPAND CONCESSIONS

Provide more concessions with healthy food options at parks and facilities.



DEDICATED USE TRAILS

Provide more and separate trails for hiking, biking, equestrian use to help mitigate conflict and increase safety for all users along trails.



ENHANCE CONNECTIVITY

Provide greenways and trail networks that connect communities, parks and provide safe transportation corridors for bicyclists, equestrians and pedestrians.



EXPAND AND PRESERVE GREENSPACE

More trees, pocket parks, native habitat areas, nature centers, learning gardens, and natural open spaces with native and regenerative landscaping for passive recreation and viewing wildlife.



PARTNERSHIPS WITH COMMUNITY ORGANIZATIONS

Expand park use and greenspace access through school and community partnerships.

Population Vulnerability

Population Vulnerability is assessed across 4 dimensions:

1. Social vulnerability
2. Health vulnerability
3. Transportation barriers
4. Environmental vulnerability

Social Barriers Dimension:



- Prevalence of:
- » Young Children
 - » Elderly
 - » Non-English Speaking Residents
 - » Single Parent Households
 - » Poverty
 - » Unemployment
 - » Majority-Minority Population

Transportation Barriers Dimension:



- » Limited Active Commuting
- » Limited Automobile Access
- » Limited Public Transit Access
- » High Traffic Density
- » High Pedestrian Injuries

Health Vulnerability Dimension:



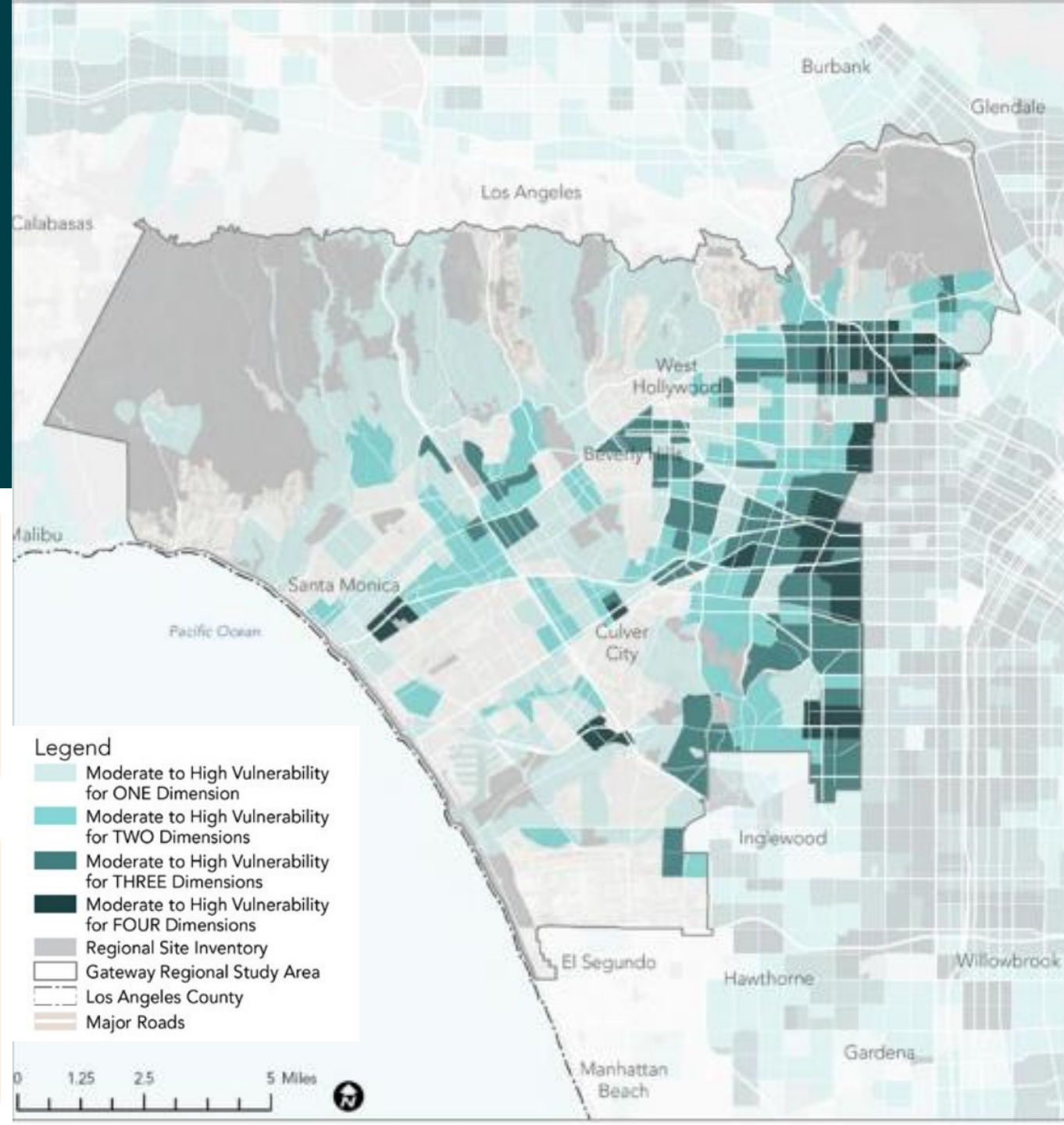
- » Reduced Life Expectancy at Birth
- » High Pollution Levels

Environmental Vulnerability Dimension:



- » Limited Park Access
- » Limited Tree Canopy
- » High % of Impervious Surface
- » High Excessive Heat Days
- » High Urban Heat Island Index Score

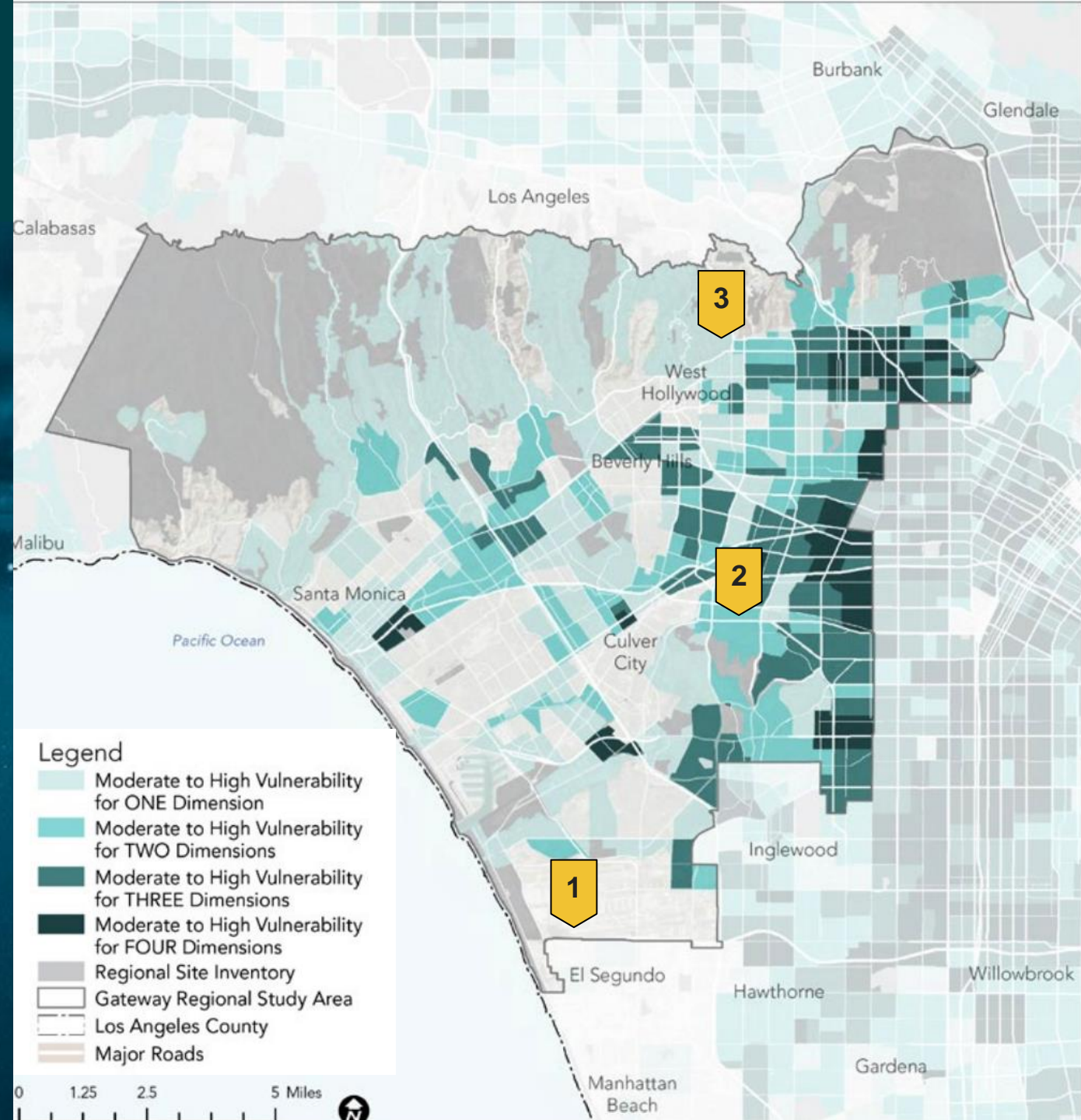
Dimensions of Population Vulnerability



Population Vulnerability

FY 23-24 (Under Consideration)

1. Imperial Highway Green Infrastructure Project
2. Baldwin Vista Green Streets Project
3. Hollywood Bowl Stormwater Quality Improvement and Sustainability Project



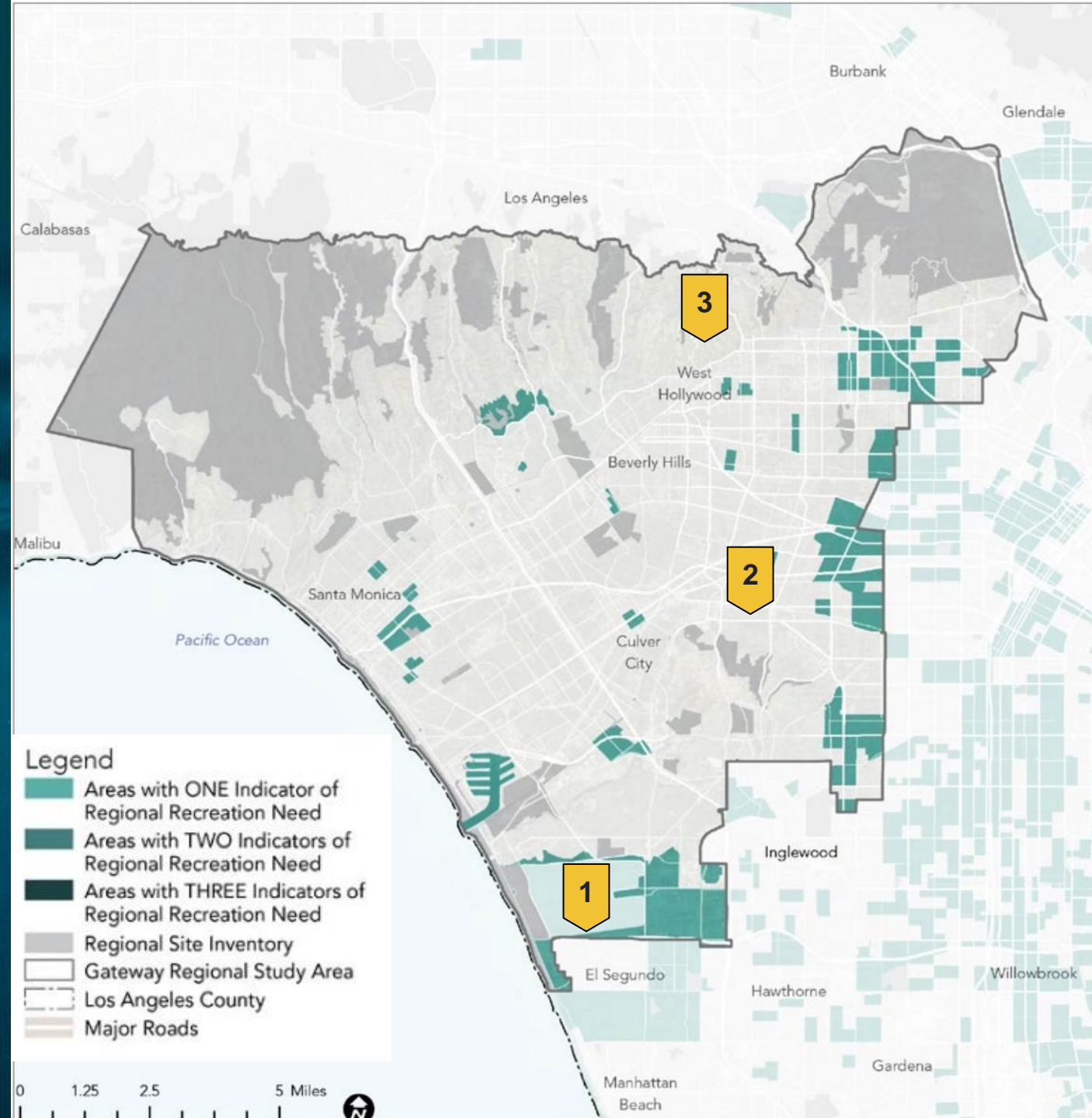
Regional Recreation Need

FY 23-24 (Under Consideration)

1. Imperial Highway Green Infrastructure Project
2. Baldwin Vista Green Streets Project
3. Hollywood Bowl Stormwater Quality Improvement and Sustainability Project

Indicators of Regional Recreation Need are:

- High levels of social and transportation barriers
- High levels of health and environmental vulnerability
- Low proximity to regional recreation
- Low visitorship to regional recreation sites



Priority Areas for Restoration

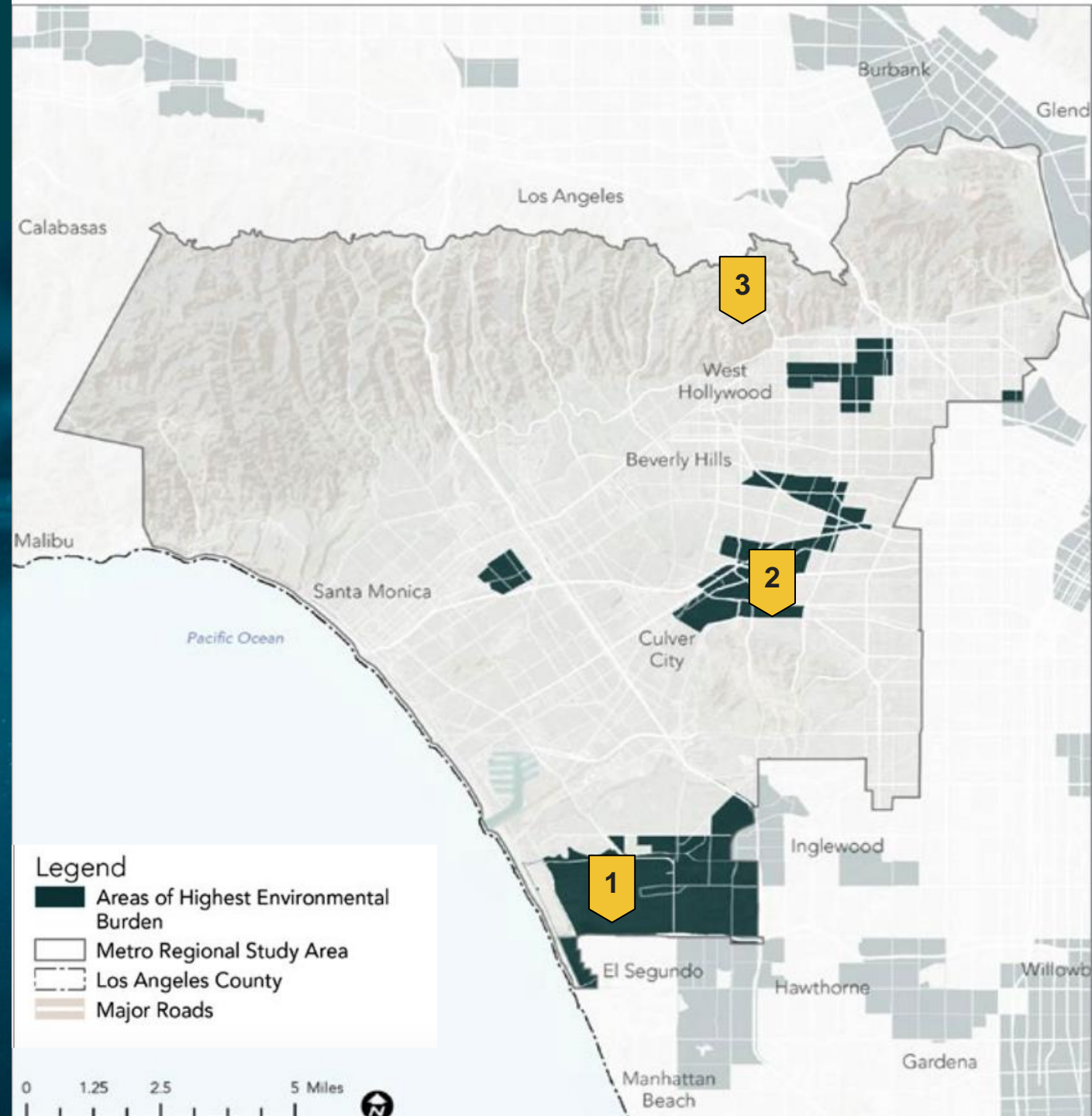
FY 23-24 (Under Consideration)

1. Imperial Highway Green Infrastructure Project
2. Baldwin Vista Green Streets Project
3. Hollywood Bowl Stormwater Quality Improvement and Sustainability Project

Priority Areas for Restoration are areas with the most environmental burdens with respect to:

- Groundwater threat
- Hazardous waste
- Poor air and water quality
- Pollution burden

These brownfields or abandoned areas may be converted to park and open space.





QUICK RESOURCES & REMINDERS



PROJECT LABOR AGREEMENTS

SAFE, CLEAN WATER PROGRAM IMPLEMENTATION ORDINANCE REMINDER

Projects funded by the SCWP that have an estimated capital cost of over twenty-five million dollars (\$25,000,000) must require that all contractors performing work on the project be bound by the provisions of:

1. A County-wide Project Labor Agreement, if such an agreement has been successfully negotiated between the County and the Trades and is approved by the Board, or
2. A Project Labor Agreement ("PLA") mirroring the provisions of such County PLA.

Full text:

"With respect to a Project funded with SCW Program funds through the Regional Program, if the Project has an estimated capital cost of over twenty-five million dollars (\$25,000,000), as adjusted periodically by the Chief Engineer in accordance with changes in the Consumer Price Index for all urban consumers in the Los Angeles area, or other appropriate index, a provision that the Infrastructure Program Project Developer for such a Project must require that all contractors performing work on such a Project be bound by the provisions of: (1) a County-wide Project Labor Agreement ("County PLA"), if such an agreement has been successfully negotiated between the County and the Trades and is approved by the Board, or (2) a Project Labor Agreement ("PLA") mirroring the provisions of such County PLA."

"With respect to a Project funded with SCW Program funds through the Regional Program, if one or more of the Municipalities that is a financial contributor to a Project has its own PLA, a provision that the Infrastructure Program Project Developer for the Project must require that contractors performing work on the Project are bound to such PLA. If more than one of the contributing Municipalities to a capital project has a PLA, the Project Developer shall determine which of the PLAs will be applied to the Project."

RESOURCE HIGHLIGHT

REDESIGN LA FUNDING DATABASE

REDESIGN LA

A STRATEGIC INITIATIVE OF THE
COUNCIL FOR WATERSHED HEALTH



Redesign LA curated a list of active funding opportunities from public sources (Federal, State, and Local) and private philanthropy that can be used to leverage resources for multi-benefit projects and programs.

Redesign LA is an initiative of Council for Watershed Health.

Visit redesign.la/project-funding

**CENTRAL SANTA MONICA BAY
Regional Program Quarterly Report Summary**

Watershed Area	Central Santa Monica Bay
Call for Projects FY	FY20-21
Report Year	FY21-22

Full reports are available at:

<https://portal.safecleanwaterla.org/scw-reporting/map>

Row Labels	Project Developer	Report Period	Report Status	Active Phase List	Scope Modification	Exhibit Modification	Activity Concern	Activity Delay	Funding Projected	Funds Awarded to Date	Expenditures to Date
Infrastructure Project											
Beverly Hills Burton Way Green Street and Water Efficient Landscape Project	City of Beverly Hills (Derek Nguyen)	Q1 (July - September)	Complete	Construction	No	No	Yes	No	\$5,000,000.00	\$5,000,000.00	\$0.00
		Q2 (October - December)	Complete	Construction	No	No	Yes	No	\$5,000,000.00	\$5,000,000.00	\$423,250.00
Culver City Mesmer Low Flow Diversion	City of Culver City	Q1 (July - September)	Complete	Other, Construction, Design, Post Construction Monitoring	No	No	Yes	No	\$950,000.00	\$950,000.00	\$0.00
		Q2 (October - December)	Complete	Other, Construction, Design	No	No	N/A	No	\$950,000.00	\$950,000.00	\$0.00
Ladera Park Stormwater Improvements Project	Los Angeles County Public Works	Q1 (July - September)	Complete	Construction	No	No	N/A	No	\$2,000,000.00	\$1,000,000.00	\$1,000,000.00
		Q2 (October - December)	Complete	Construction	No	No	N/A	No	\$2,000,000.00	\$2,000,000.00	\$1,000,000.00
MacArthur Lake Rehabilitation Project	City of Los Angeles, Bureau of Sanitation	Q1 (July - September)	Complete	Planning, Environmental Documentation	No	No	N/A	No	\$20,043,718.00	\$4,000,000.00	\$558,748.80
		Q2 (October - December)	Complete	Planning, Environmental Documentation	No	No	N/A	No	\$20,043,718.00	\$4,000,000.00	\$1,151,429.03
Monteith Park and View Park Green Alley Stormwater Improvements Project	Los Angeles County Public Works	Q1 (July - September)	Complete	Design, Environmental Documentation, Other	No	No	N/A	No	\$4,550,000.00	\$1,400,000.00	\$1,111,227.70
		Q2 (October - December)	Complete	Design, Environmental Documentation, Other	No	No	N/A	No	\$4,550,000.00	\$1,400,000.00	\$1,356,551.76
Sustainable Water Infrastructure Project	City of Santa Monica	Q1 (July - September)	Complete	Construction	No	A-1 Budget Plan Modifications, A-3 Total Activity Cost Modifications	N/A	No	\$7,500,000.00	\$5,000,000.00	\$7,267,953.00
		Q2 (October - December)	Complete	Construction	No		N/A	No	\$7,500,000.00	\$5,000,000.00	\$7,425,884.00
Washington Boulevard Stormwater and Urban Runoff Diversion	City of Culver City	Q1 (July - September)	Complete	Other, Design, Post Construction Monitoring	No	No	Yes	No	\$3,600,000.00	\$2,400,000.00	\$271,857.03
		Q2 (October - December)	Complete	Other, Design, Post Construction Monitoring	No	No	Yes	No	\$3,600,000.00	\$2,400,000.00	\$271,857.03



Hollywood Bowl Stormwater Quality Improvement and Sustainability Project

Technical Resources Program

Fiscal Year 2023-2024

Central Santa Monica Bay

Project Lead: Mark Ladd

Presenter Names: Laura Connelly, Elaine Nesbit, Mike Rudd

Previously Awarded TRP – No



PROJECT OVERVIEW

Multi-benefit project to improve water quality and sustainability by capturing, treating and/or infiltrating stormwater runoff.

- Primary Objective: water quality improvement
- Secondary Objectives: improved sustainability
- Project Status: Seeking TRP Funding for development of the Feasibility Study (FS)
- Total Funding Requested: \$300,000





SITE LOCATION WITHIN SCWP WATERSHEDS



- Project Location: Hollywood
- Watershed Area: Central Santa Monica Bay
- Capture Area



SITE LOCATION



Hollywood Bowl Future Proposed Vision Plan



PROJECT BACKGROUND – THE BOWL VISION PLAN

- **Why was the Project Location selected?**

As part of Visioning and Sustainability planning process, stormwater quality improvements and reduced site runoff were identified as critical issues that needed to be addressed and would benefit both preserving the natural open space and benefit the broad and diverse communities who frequent the Bowl.
- **How was the Project developed?**

The Los Angeles Philharmonic Association engaged a Landscape Architect, arborist and Sustainability/Civil Design firm to evaluate the Hollywood Bowl park, with over 65 acres of undeveloped native flora and fauna. Based upon extensive research and site investigation, they created a sustainability outline to guide stewardship of this LA County Park. The TRP application came out of those efforts.
- **Which regional water management plan includes the proposed project?**

The project will be proposed to the RWMG and request to be included in their respective plan and database.



BENEFITS TO DISADVANTAGED COMMUNITIES

The Hollywood Bowl, as a performance venue and LA County park is for everyone and reaches a wide range of municipalities and disadvantaged communities in several ways.

DIVERSE PROGRAMMING ATTRACTS A DIVERSE AUDIENCE:

Mariachi USA, the Hollywood Bowl Jazz festival (formerly known as the Playboy Jazz Festival), Korea Times Music festival, genres from classical, jazz, pop, rock, musicals, movie music. These events reach wide and diverse communities, providing a diverse array of performing artists that appeal to the community,

THE BOWL IS AFFORDABLE:

With \$1 tickets available to many concerts, along with the ability to bring your own picnic and drinks – the Bowl provides an affordable way to experience the arts.

THE BOWL IS ACCESSIBLE:

From the Metro station at Hollywood & Highland, along with Bowl shuttles and Bowl Park & Ride bus system – it's easy and inexpensive to get to the Bowl – from Sun Valley to South LA, Northridge to West Covina.

These programs combined result in a wide diversity of attendance at Bowl events – providing a resource to disadvantaged communities that may not otherwise have access to world class productions.



PROJECT BACKGROUND – VISION PLAN GOALS

Vision Plan Goals





Partners

- Who are the implementation partners already identified?
The Los Angeles Philharmonic has invested \$500,000 to the visioning and sustainability effort, along with \$100,000 annual funding for sustainability project. Public and private funding will be determined during the FS process, but it is anticipated that LA Phil will be looking to LA County DPR and FCD to partner on this project.
- What communities or groups have expressed support for the project?
Los Angeles County Department of Parks and Recreation has expressed support for both the Visioning and Sustainability Plan, along with this Measure W application.
- Have you received a letter of concurrence from the municipality and Flood Control District?
We have received a letter of support from Los Angeles County Department of Parks and Recreation
- Have you yet engaged the appropriate vector control district about the project concept?
Not at this time. VC will be engaged during the FS process.



PROJECT BACKGROUND – SUSTAINABILITY GOALS

Sustainability & Resiliency Framework: Goals



Priority Scope - All Projects
Sustainability & Resiliency Framework



PROJECT BACKGROUND – SUSTAINABLE STRATEGIES

Strategies



Water &
Drainage

A. Subwatershed Initiatives

- 1 - Natural Areas Subwatershed
- 2 - Lot A Subwatershed
- 3 - Lot B Subwatershed
- 4 - Lot C/D Subwatershed

B. Regional Water Quality: Measure W Potential Projects

C. Recycled Water



Habitat &
Ecology

A. Developed Areas Canopy

B. Natural Areas & Demonstration Restoration Sites

- 1 - Bowl Backdrop
- 2 - Bowl Seating Surround



Net Zero
Carbon &
Energy

A. Lot D Solar

B. Recycling Consolidation

C. Onsite Composting

Priority Scope - All Projects
Sustainability & Resiliency Framework



PROJECT BACKGROUND – SUSTAINABLE STRATEGIES

Water & Drainage Strategies

Stormwater Management



Bioretention Planters & Swales
typ max slope = 4%



Permeable Pavement
typ max slope = 5%



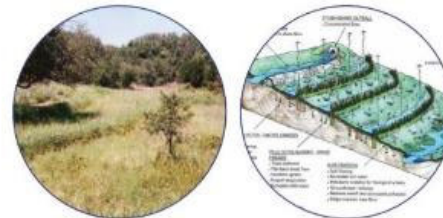
Infiltration Trench & Gallery
typ max slope = 5%



Dry Wells
typ max slope = 15%



Vegetated Filter Strip
typ max slope = 6-33%



Diversion & Infiltration Berms
typ max slope = 5%

Priority Scope - All Projects
Water and Drainage



PROJECT BACKGROUND

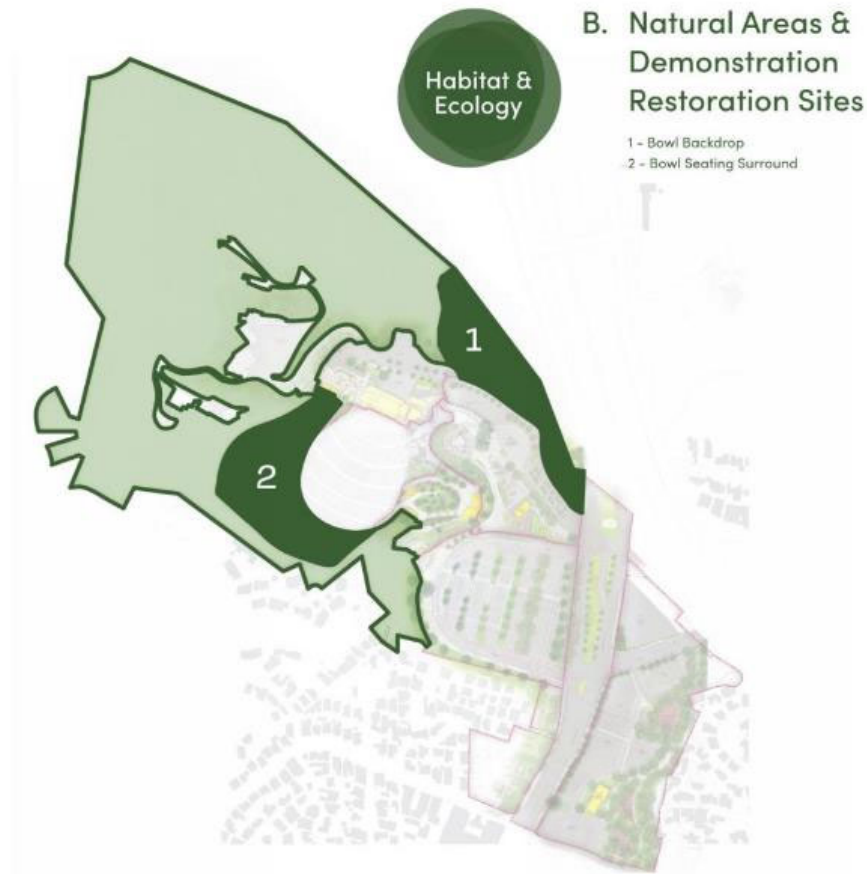
Issues Addressed

- Patron safety
- Longevity / lifespan
- Maintenance need
- Invasives management
- Drought tolerance
- Aesthetics & treatment of landscape voids
- Habitat restoration
- Erosion control / slope stabilization
- Wildfire risk / ladder fuels

Site Strategies

- visible demonstration sites
- fire risk and erosion assessments
- employ erosion management strategies
- refer to 2021 tree inventory
- remove, prune, and maintain individual trees noted with safety, erosion, and fire concerns
- native resilient planting
- establishment irrigation

Priority Scope Areas





Project Location





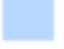


California Climate Investments Priority Populations 2022 CES 4.0

California Air Resources Board

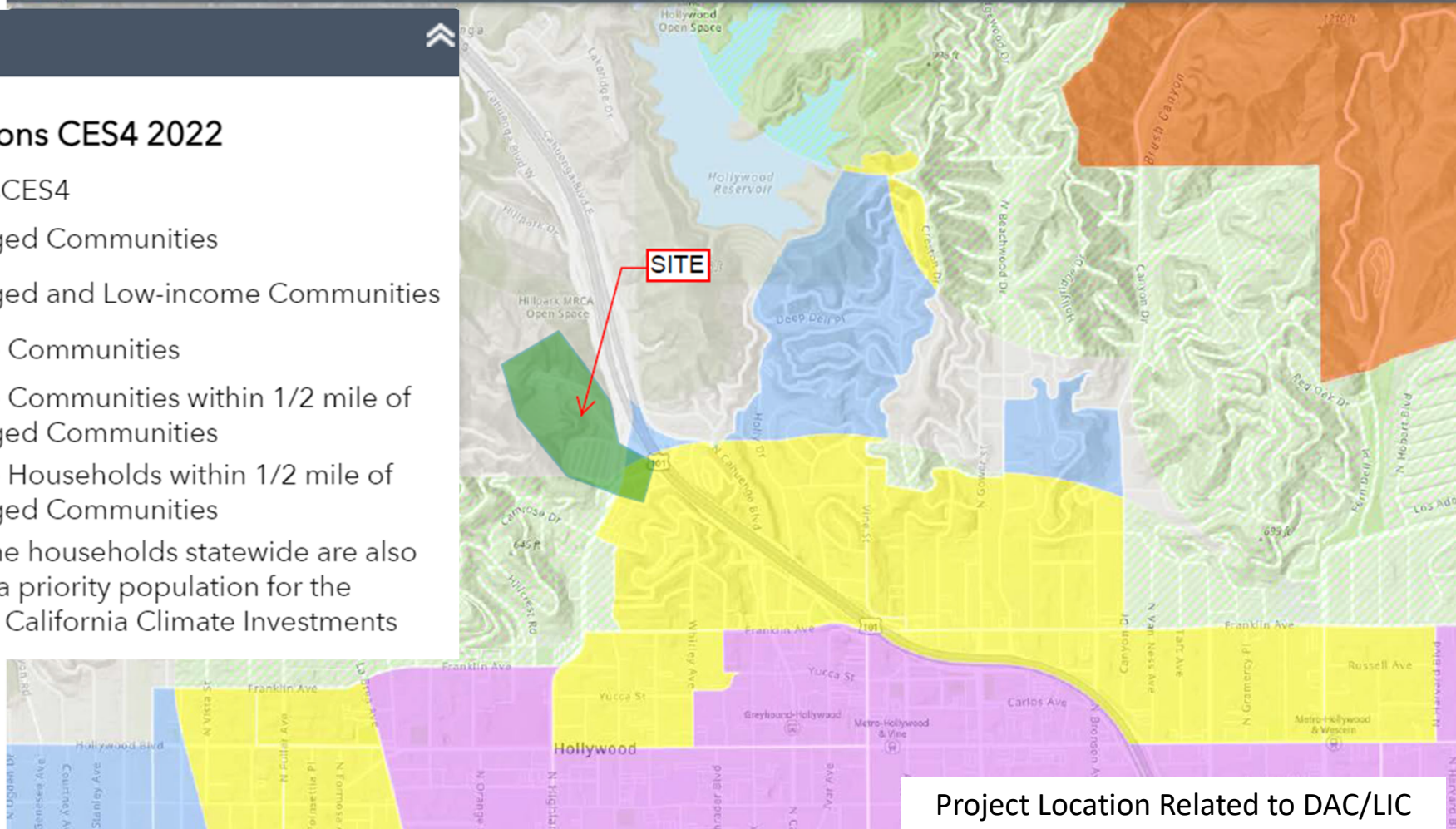
Legend

Priority Populations CES4 2022

PriorityPopulationsCES4

-  Disadvantaged Communities
-  Disadvantaged and Low-income Communities
-  Low-income Communities
-  Low-income Communities within 1/2 mile of Disadvantaged Communities
-  Low-income Households within 1/2 mile of Disadvantaged Communities

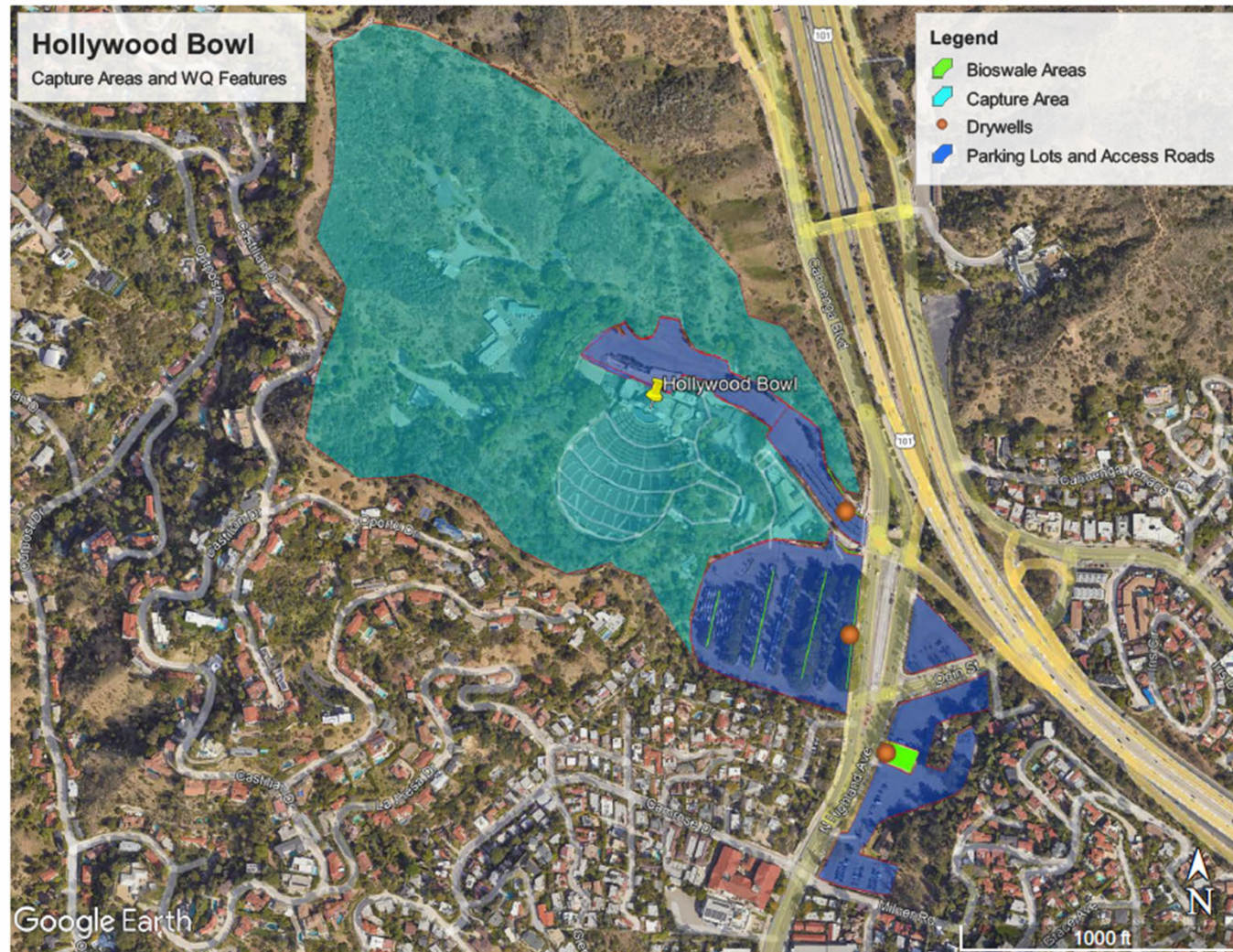
* Low-income households statewide are also considered a priority population for the purposes of California Climate Investments



Project Location Related to DAC/LIC



PROJECT SITE – 68 ACRES UNDEVELOPED/20 DEVELOPED





PROJECT OVERVIEW – FACT SHEET

Hollywood Bowl Stormwater Quality Improvement and Sustainability Project is a multi-benefit project that:

- Improves drainage, optimizes stormwater capture and infiltration, increases vector control and helps protect a cleaner, locally controlled water supply.
- Addresses nuisance flooding and improve stormwater quality by treating 100% of the runoff from the 85th percentile, 24-hour storm event. The project will:
- Protects our coastal waters and beaches from the trash and contaminants in stormwater that make people sick and threaten marine life.
- Modernizes infrastructure, using a combination of nature, science, and new technology.
- Helps protect public health, ensuring safer, greener, healthier, and more livable spaces for all.
- Prepares our region for the effects of a changing climate — including recurring cycles of drought, wildfire, and flooding.

Stormwater improvements to this iconic 100-year-old venue include installation of bioswales and drywells to capture, treat and infiltrate stormwater from onsite sources as well as from adjacent neighborhoods.





STORMWATER QUALITY IMPROVEMENTS

THE PROJECT PROPOSES TO:

- Capture 100% of the 85th Percentile, 24-hr event
- Infiltrate approximately 15 ac-ft of runoff per year
- Plant trees and shrubs
- Achieve ~70 points in Safe Clean Water Program scoring.

Funding request of \$300k for development of a Feasibility Study

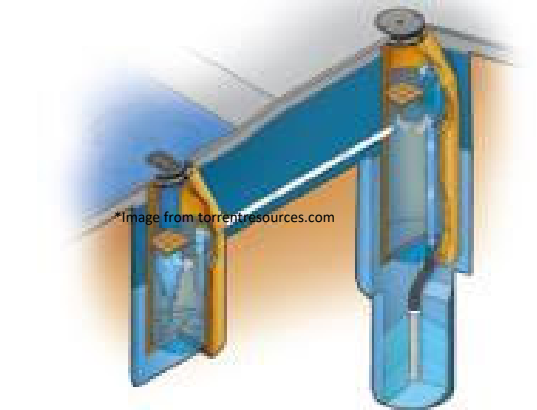
Project Summary



Bioswales



Curb Inlet



Drywell System*



Porous Paving



PROJECT OVERVIEW – CAPTURE AREA LOT A

Lot A and Entrance



Capture Areas



PROJECT OVERVIEW – CAPTURE AREA LOT B



Capture Areas



PROJECT OVERVIEW – CAPTURE AREA LOTS C & D



Lots C, D and Milner Road



Capture Areas



Preliminary Costs

Hollywood Bowl TRP Project					
Preliminary Cost Estimate					
28 July 2022					
Scheduled Value					
Item #	Item	Quantity	Unit	Unit Price	Total
1	Drywell Systems	7	EA	\$ 100,000	\$ 700,000
2	Storm Drain Pipe	800	LF	\$ 31	\$ 24,800
3	Curb Inlet	6	EA	\$ 6,000	\$ 36,000
4	Bioswales	33,160	SF	\$ 30	\$ 994,800
5	Porous Paving	5,000	SF	\$ 6	\$ 30,000
6	Trees	32	EA	\$ 500	\$ 16,000
7	Landscape	1	LS	\$ 20,000	\$ 20,000
				Construction Total	\$ 1,821,600
				Construction Contingency (20%)	\$ 364,320
				Construction Sub Total	\$ 2,185,920
				Planning Total	\$ 109,296
				Design Total	\$ 327,888
				Construction Management	\$ 218,592
				Grand Total	\$ 2,841,696



Estimate O&M Cost

Monitoring Cost (1 year)		\$ 22,036
Annual Maintenance Costs*	units	annual cost
Hollywood Bowl		\$30,400
<i>Bioswales, Landscaping</i>	number of laborers = 4 labor rate (per hour) = \$100 hours per activity = 8 deployments per year = 4 equivalent days per year = 4	\$12,800
<i>Curb Inlets</i>	number of laborers = 2 labor rate (per hour) = \$100 hours per activity = 4 vactor truck (per day) = \$8,000 deployments per year = 4 equivalent days per year = 2	\$17,600
<i>Porous Paving</i>	number of laborers = 2 labor rate (per hour) = \$100 hours per activity = 8 vactor truck (per day) = \$8,000 deployments per year = 2 equivalent days per year = 2	\$19,200
<i>Drywells (3 pretreatment, 7 infiltration chambers)</i>	number of laborers = 2 labor rate (per hour) = \$100 hours per activity = 8 vactor truck (per day) = \$8,000 deployments per year = 4 equivalent days per year = 4	\$38,400
Annual Maintenance Costs =		\$88,000
Annual Operation Costs		\$8,800



Funding Request

Year	SCW Funding Requested	Phase	Efforts during Phase and Year
1	\$300,000	Feasibility Study	Following 2022 Interim Guidance, effort to include evaluation of water quality/supply benefits, nature-based solutions, DAC and community investment benefits, outreach, etc.
2			
3			
4			
5			
TOTAL	\$300,000		



QUESTIONS?

Laura Connelly: General Manager

Mark Ladd: Hollywood Bowl Ops

Elaine Nesbit: Project Manager

Mike Rudd: Civil Engineer

