



---

**GAP Analysis (Phase 1) Scientific Study Update | November 2022**



# STUDY OVERVIEW

## Goal:

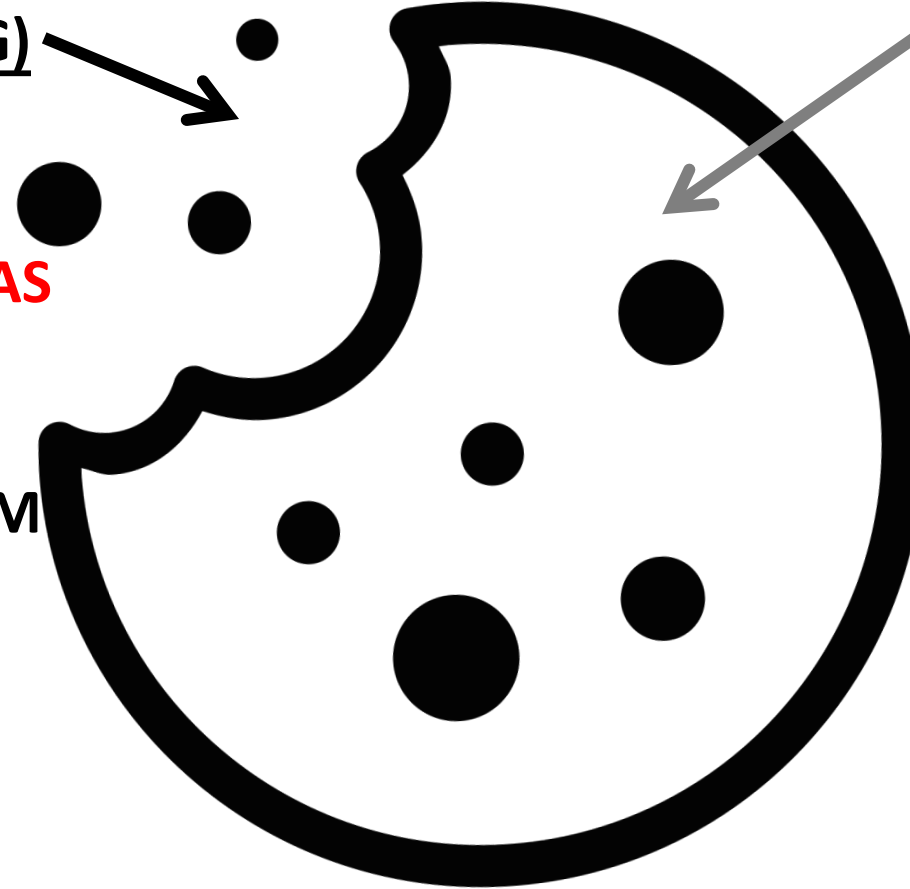
Find and analyze new projects in a watershed context to plot a coordinated, project-by-project pathway to safe, clean water



# Phased Strategy

## PHASE I (ONGOING)


- ~~TEST METHODS IN PILOT AREA~~
- **ALL WATERSHED AREAS**
- CONDUCT DESKTOP ANALYSIS
- GENERATE NEAR-TERM PROJECT CLARITY (2- TO 5-YEAR HORIZON)
- **ANALYZE PROJECTS SUBMITTED FOR FY23/24 FUNDING**







## PHASE 2 (APPROVED)

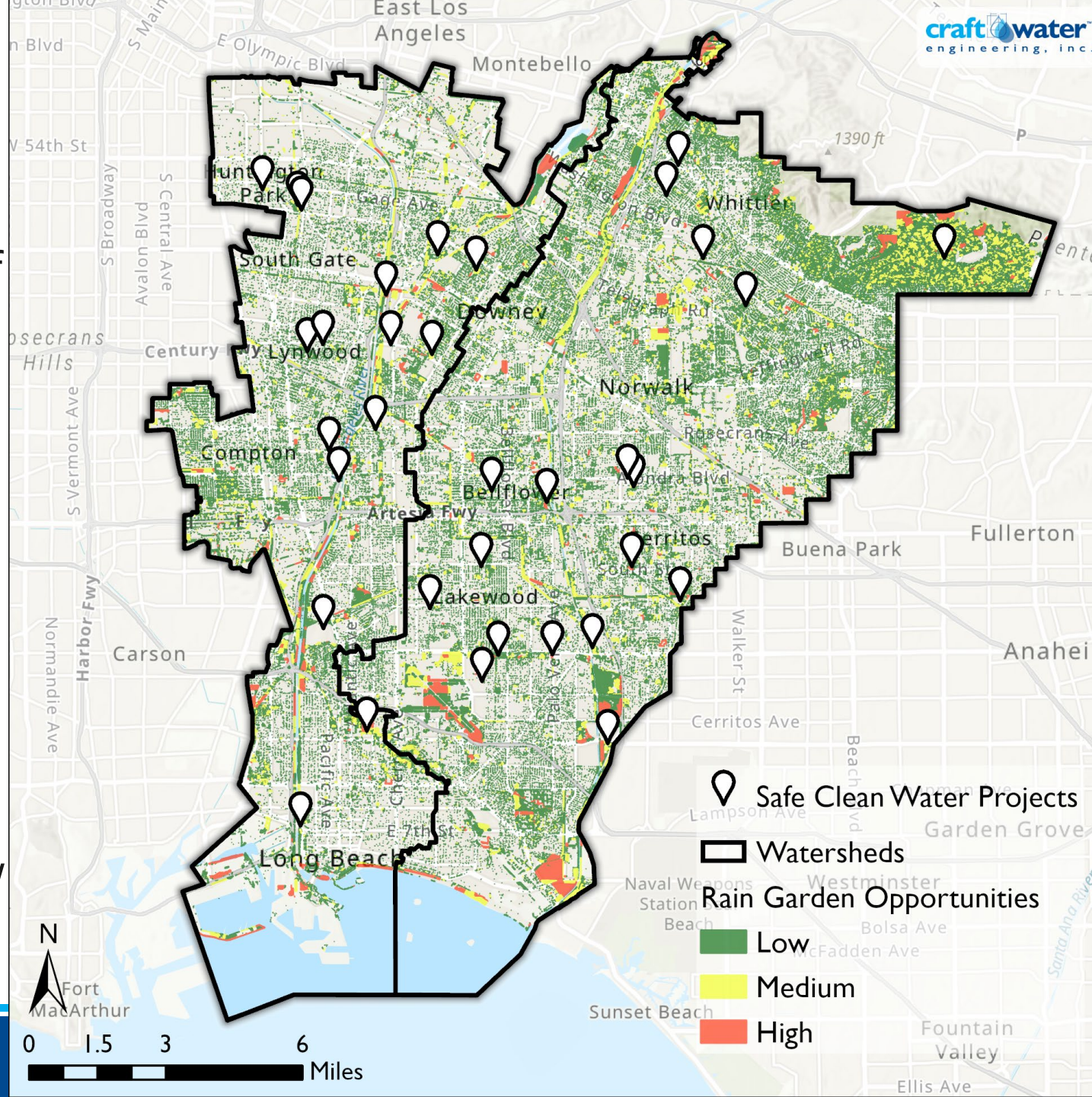
- EXPAND ANALYSIS TO FILL OUTSTANDING GAPS
- CONDUCT ENGINEER SITE VISITS
- GENERATE LONGER-TERM PROJECT CLARITY (**5- TO 50-YEAR HORIZON**)
- SYNTHESIZE ADAPTATION & PLAN RECOMMENDATIONS
- **ANALYZE PROJECTS SUBMITTED FOR FY24/25 FUNDING**

# Task 1: ID & Reconcile Opportunities

 **Objective:** Build detailed list of project opportunities for the studied area

-  **Method**
-  Compile known/planned projects
  -  Run automated screening to find new opportunities
  -  Conduct engineering review

 **Deliverable:** Web map





# Task I: Existing/Planned Projects

LLAR WMP Implementation Strategy  
Lower LA River

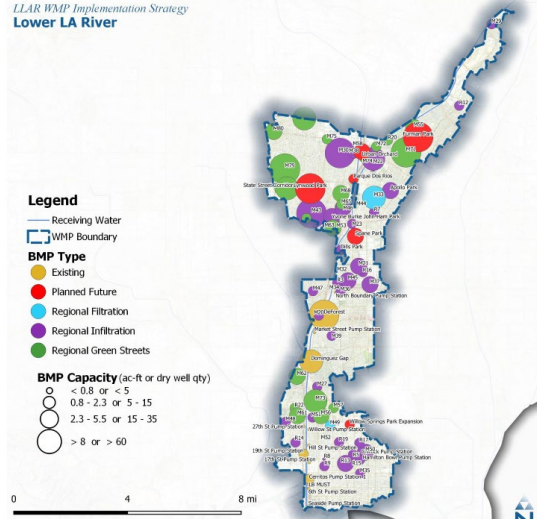


Figure 4-3. Map of regional BMPs that compose the LLAR WMP Implementation Strategy for final compliance by 2037.

LCC WMP Implementation Strategy  
Los Cerritos Channel

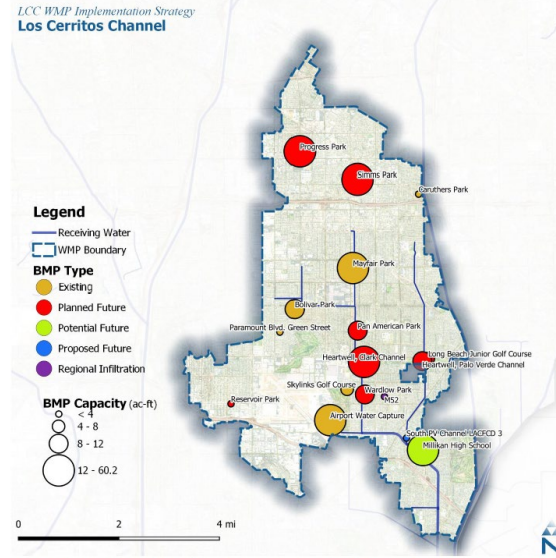
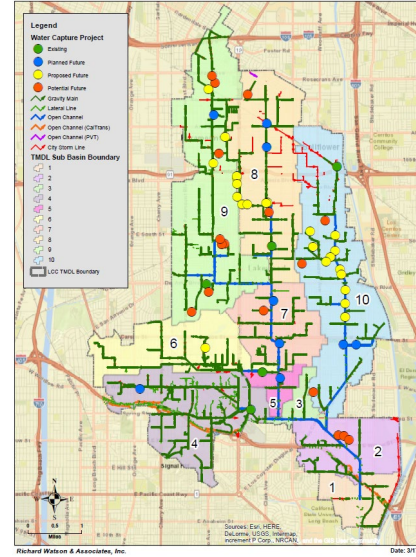
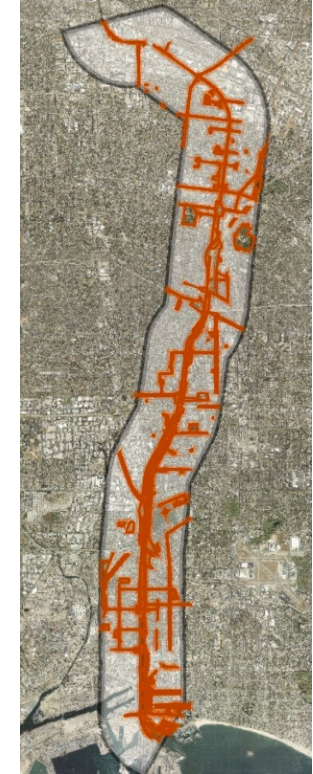


Figure 4-3 (continued). Map of regional BMPs that compose the LCC WMP Implementation Strategy for Final Compliance by 2036.

Figure 4-2: LCC Storm Drain System with Water Capture Projects



Richard Watson & Associates, Inc. Date: 3/17/2021



LSGR WMP Implementation Strategy  
San Gabriel River

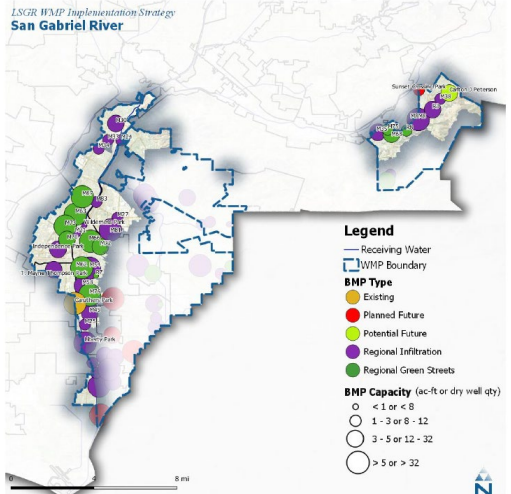


Figure 4-3 (continued). Map of regional BMPs that compose the LSGR WMP Implementation Strategy (specific to Lower San Gabriel River assessment area) for final compliance by 2036.

LSGR WMP Implementation Strategy  
Coyote Creek

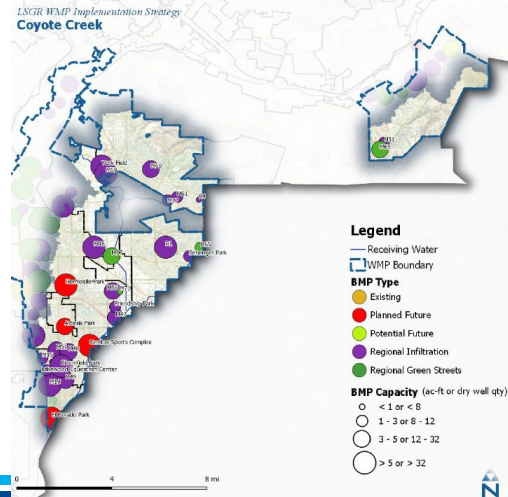


Figure 4-3 (continued). Map of regional BMPs that compose the LSGR WMP Implementation Strategy (specific to Coyote Creek assessment area) for final compliance by 2036.

Nearshore WMP Implementation Strategy  
Nearshore

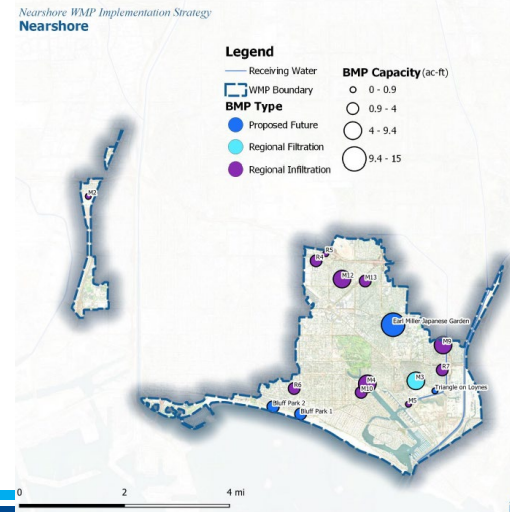


Figure 4-3 (continued). Map of regional BMPs that compose the Long Beach Nearshore WMP Implementation Strategy (including all assessment areas) for Final Compliance by 2040

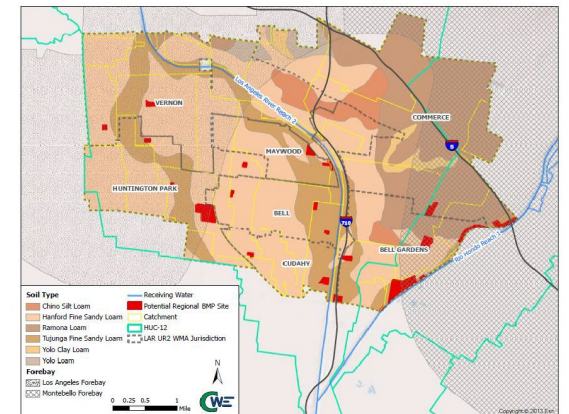
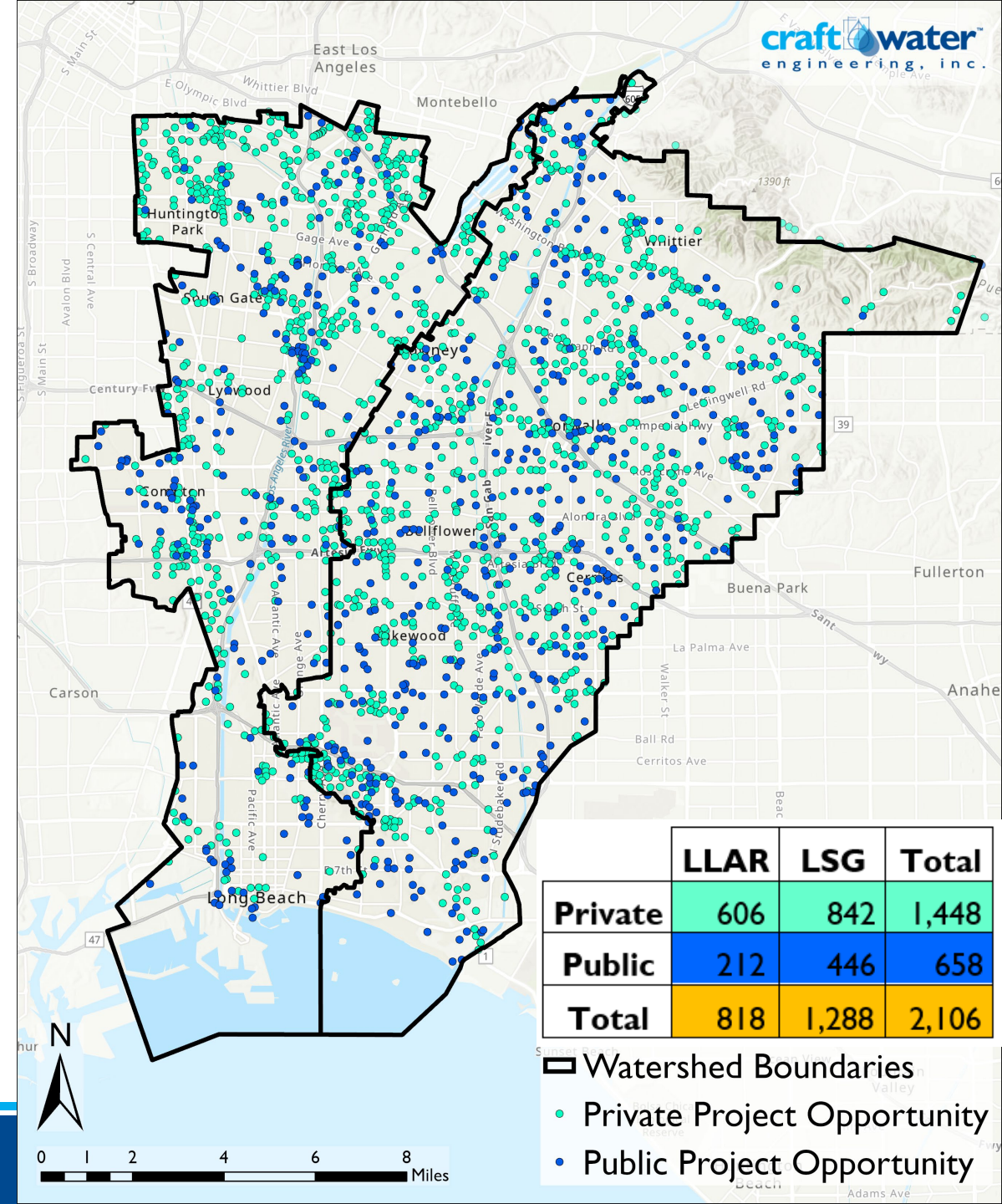
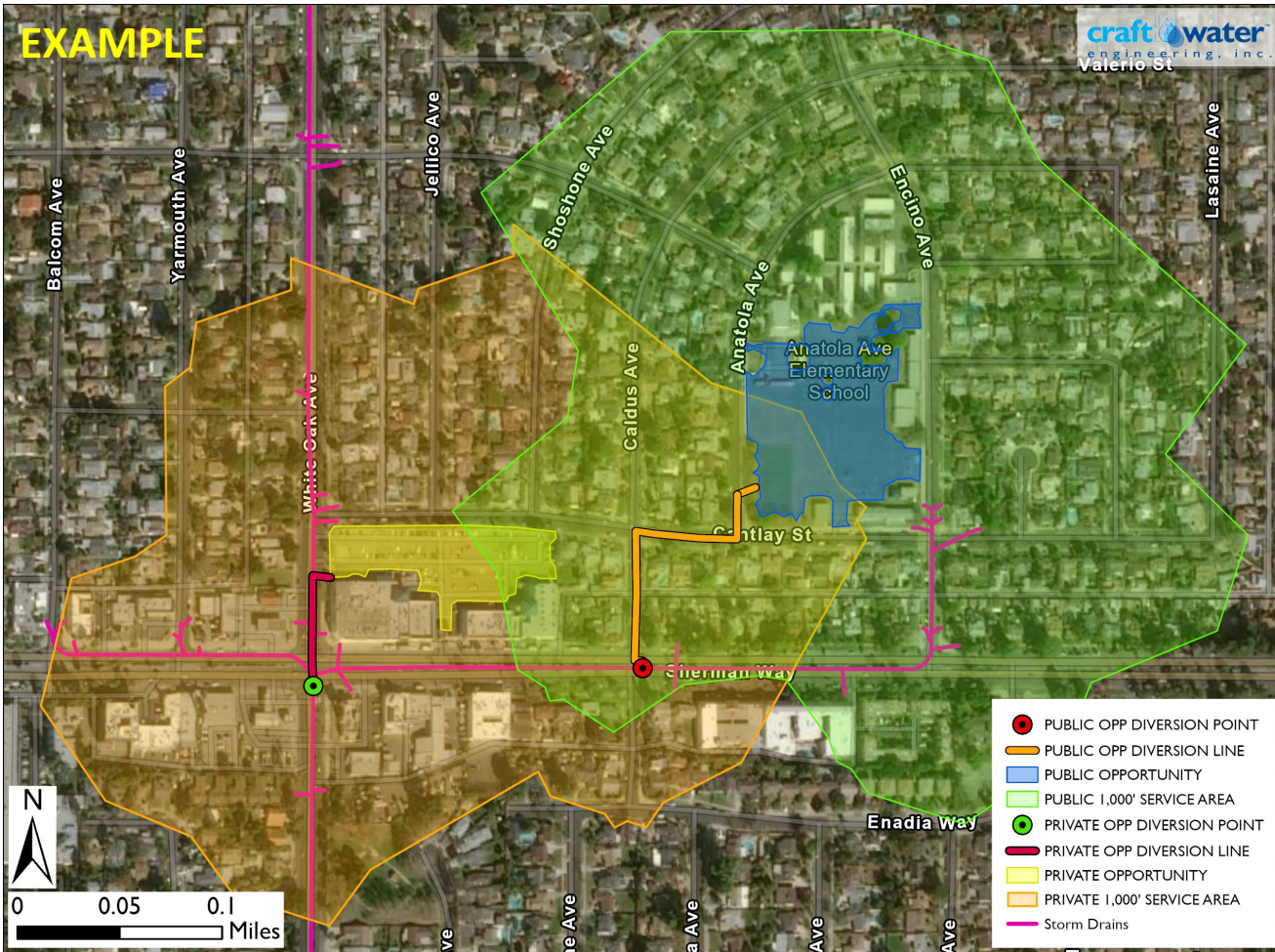


Figure 4-4 Surficial Soil Types, Groundwater Basins, and Potential Regional BMP Sites



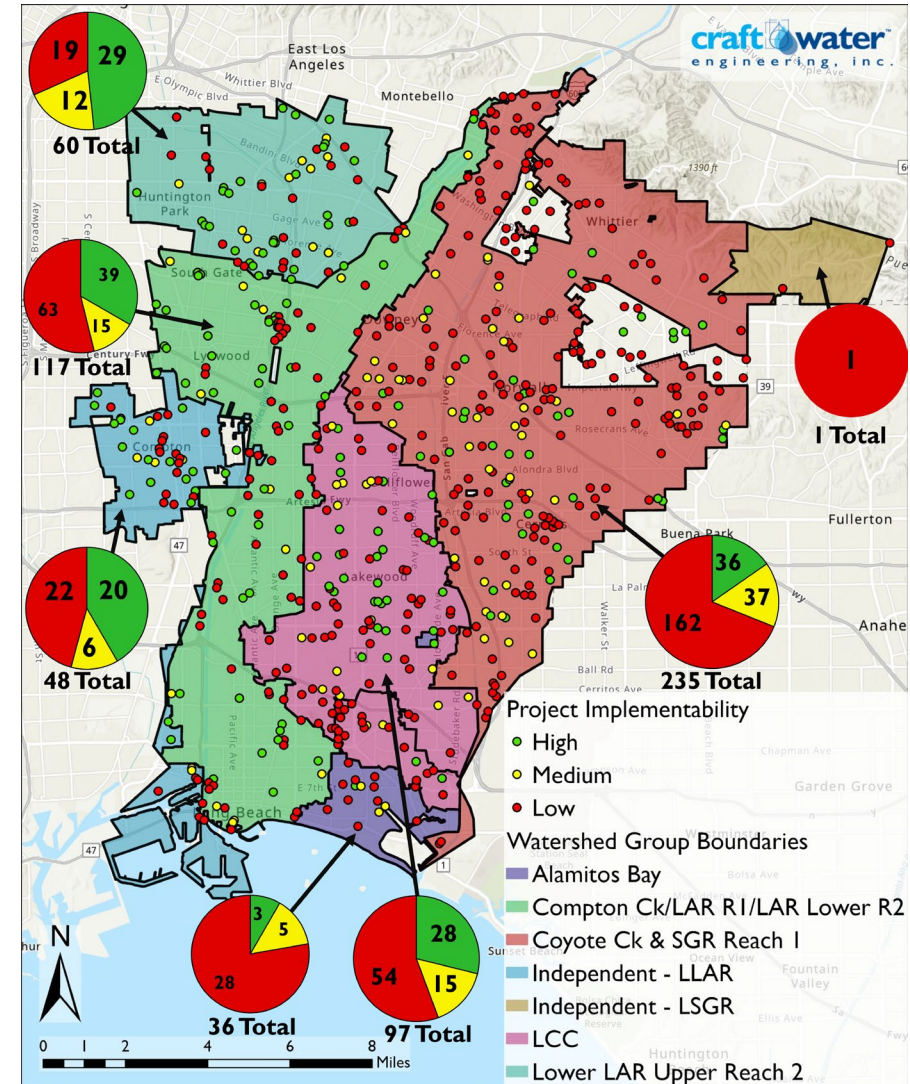
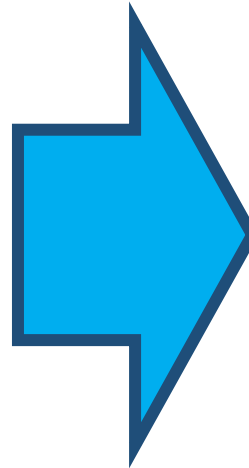
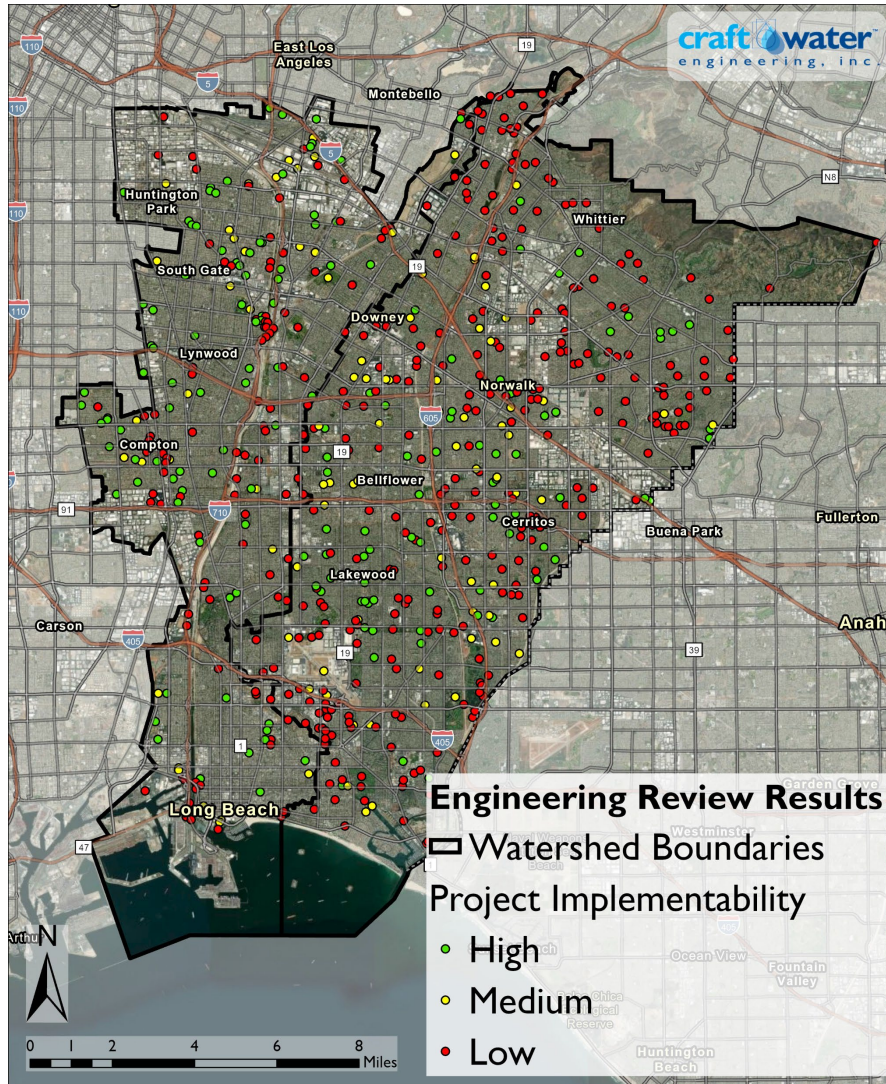
# Task I: New Projects



	LLAR	LSG	Total
<b>Private</b>	606	842	1,448
<b>Public</b>	212	446	658
<b>Total</b>	818	1,288	2,106



# Task I: Engineering Review





# Task I: Potential Project Dashboard



GAP Project Dashboard



## Legend

GAP Watersheds

Project Locations

Project Status

- GAP-Identified Opportunities
- Planning
- Design
- Existing

DAC Boundaries

City Boundaries

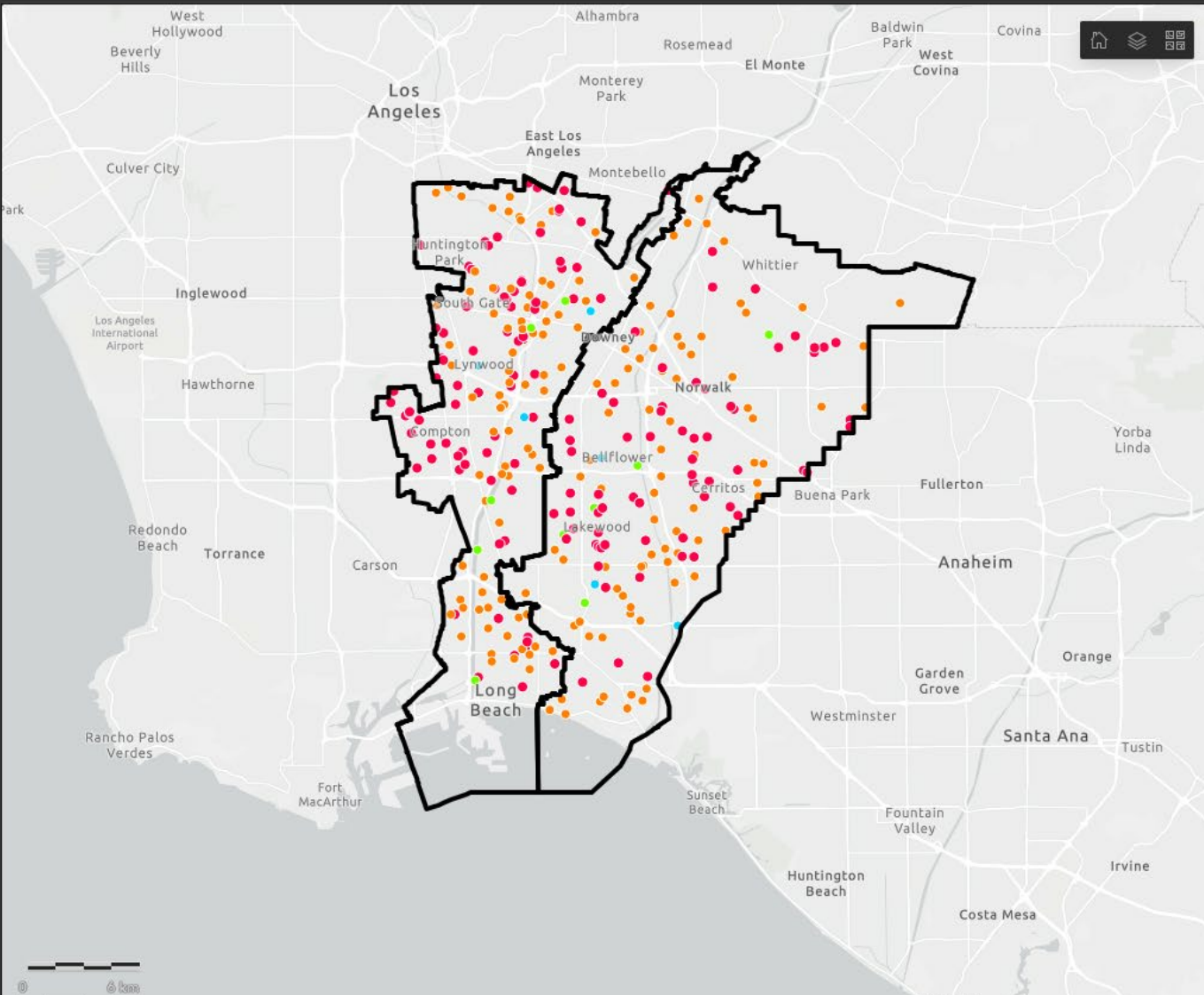
Project Drainage Areas

Project Status

- GAP-Identified Opportunities
- Planning
- Design
- Existing

Parcel-Scale Bioretention Opportunity

RG\_Density



## Total Count of Projects

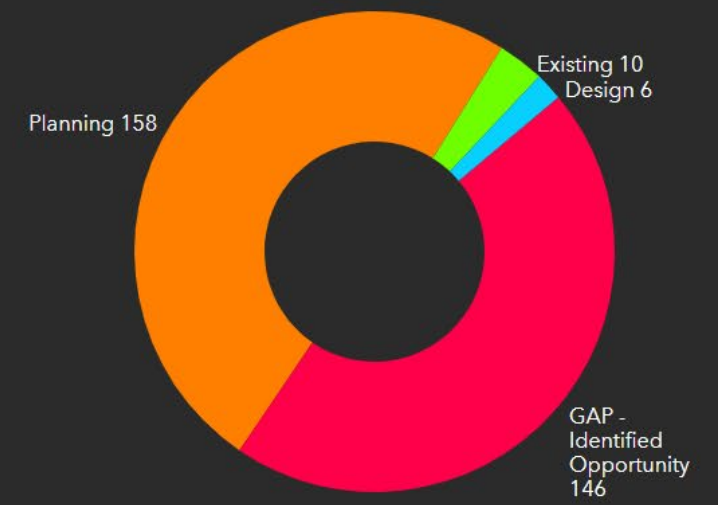
320

Number of projects in current field of view  
Last update: 1 second ago

## Total Bioretention Opportunity




15k

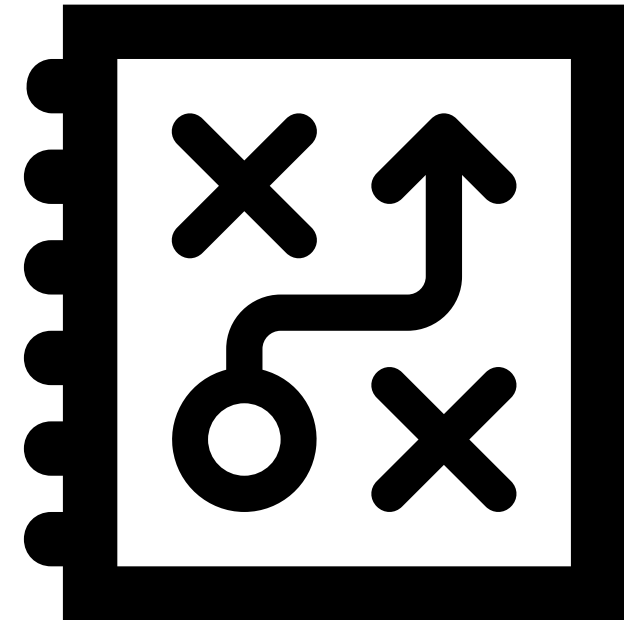
Acres of opportunities in current field of view  
Last update: 1 second ago





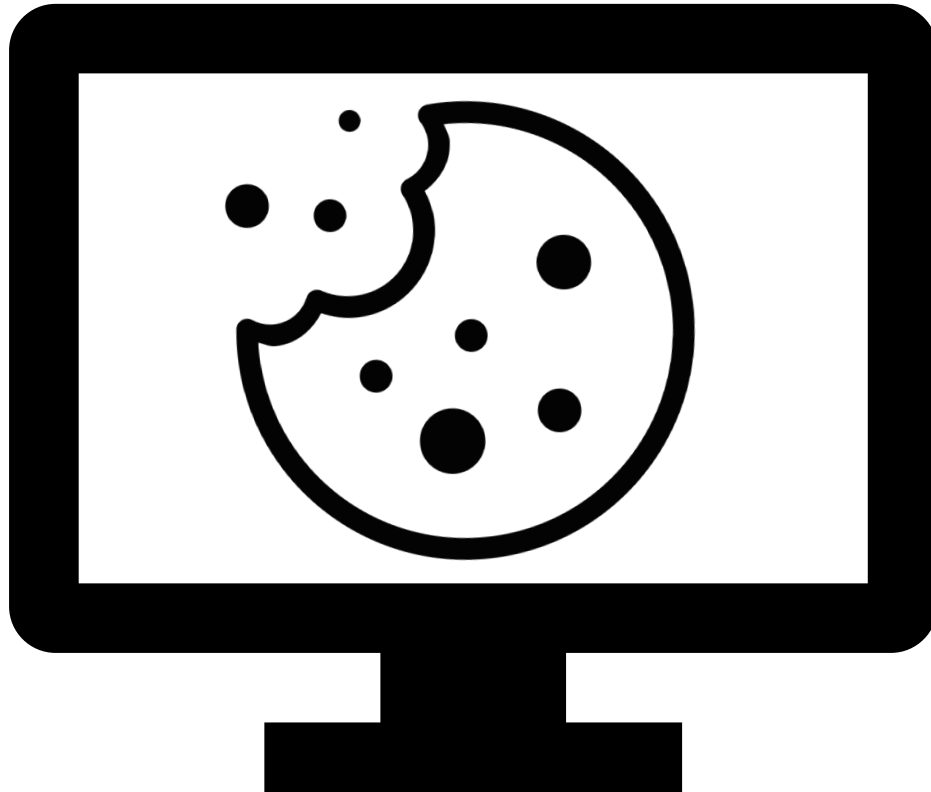
# Next Steps

-  **Task 2:** Model Interactions and Scoring
-  **Task 3:** Cross-Reference with Watersheds Management Programs
-  **Task 4:** Stormwater Investment Plan Recommendations





# Long-Term Considerations



## PHASE 3?

- Platform/tool for adapting pathways
- Routine evaluation of newly proposed SCWP projects





**craft**  **water**<sup>TM</sup>  
engineering, inc.