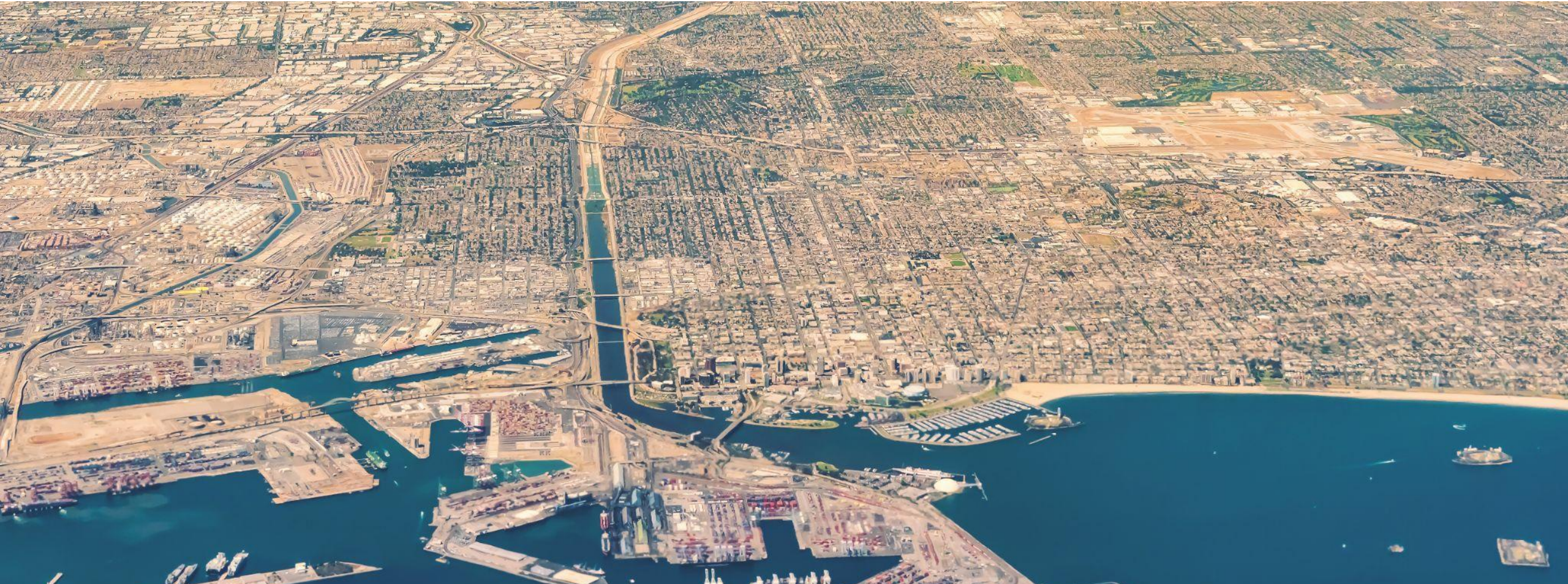




# LOWER LA RIVER WATERSHED COORDINATOR

## WASC Meeting - November 2022



# AGENDA

**Stakeholder Engagement Update**

---

**LA County Parks Needs Assessment Plus**

---

**Infrastructure LA**

---

The background of the slide is a deep blue, starry night sky. The stars are of various colors, including white, yellow, orange, and red, scattered across the dark blue expanse. A prominent white horizontal band runs across the middle of the image, serving as a backdrop for the title text.

# **STAKEHOLDER ENGAGEMENT UPDATE**

# We reached out to the following interested parties:

## Schools

- Downey USD
- Long Beach USD
- Lynwood USD
- Compton USD
- Paramount USD
- CSU Long Beach
- Long Beach City College
- Compton College

## CBOs

- SELA Collaborative
- The River Project
- Friends of the LA River
- Southeast Community Development Corporation
- Amigos De Los Rios
- Seeds of Hope
- Nature for All

## City Planning Departments

- Cudahy
- Maywood
- Downey
- Paramount
- Compton
- Lynwood
- South Gate
- Commerce
- City of Bell
- Bell Gardens
- Huntington Park
- Long Beach

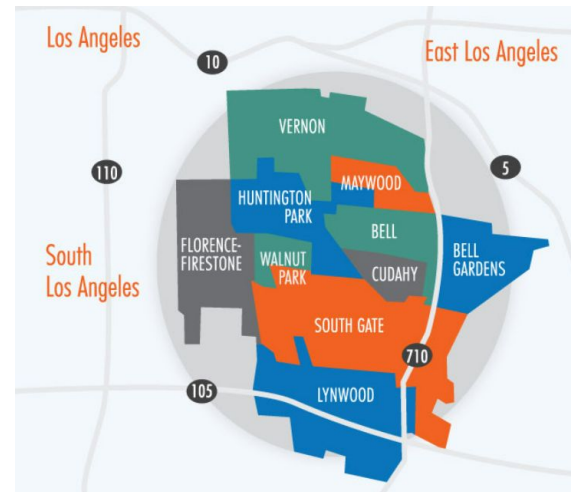
## Elected Officials

- Office of Assemblymember Mike Gipson
- Office of Assemblymember Miguel Santiago
- Office of Senator Lena Gonzalez

# October Stakeholder Meetings



MIKE GIPSON  
Assemblymember, District 64





# **PARKS NEEDS ASSESSMENT FINDINGS**

## Gateway Region

What is the

# 2022 Parks Needs Assessment Plus (PNA+)?

- Builds on the 2016 LA County Parks Needs Assessment which focused on local park access.
- The PNA+ focuses on:
  - Regional parks and recreation opportunities
  - Rural park access
  - **Population vulnerability, environmental benefits, environmental burdens, and priority areas for environmental conservation and restoration.**



# Gateway Regional Study Area

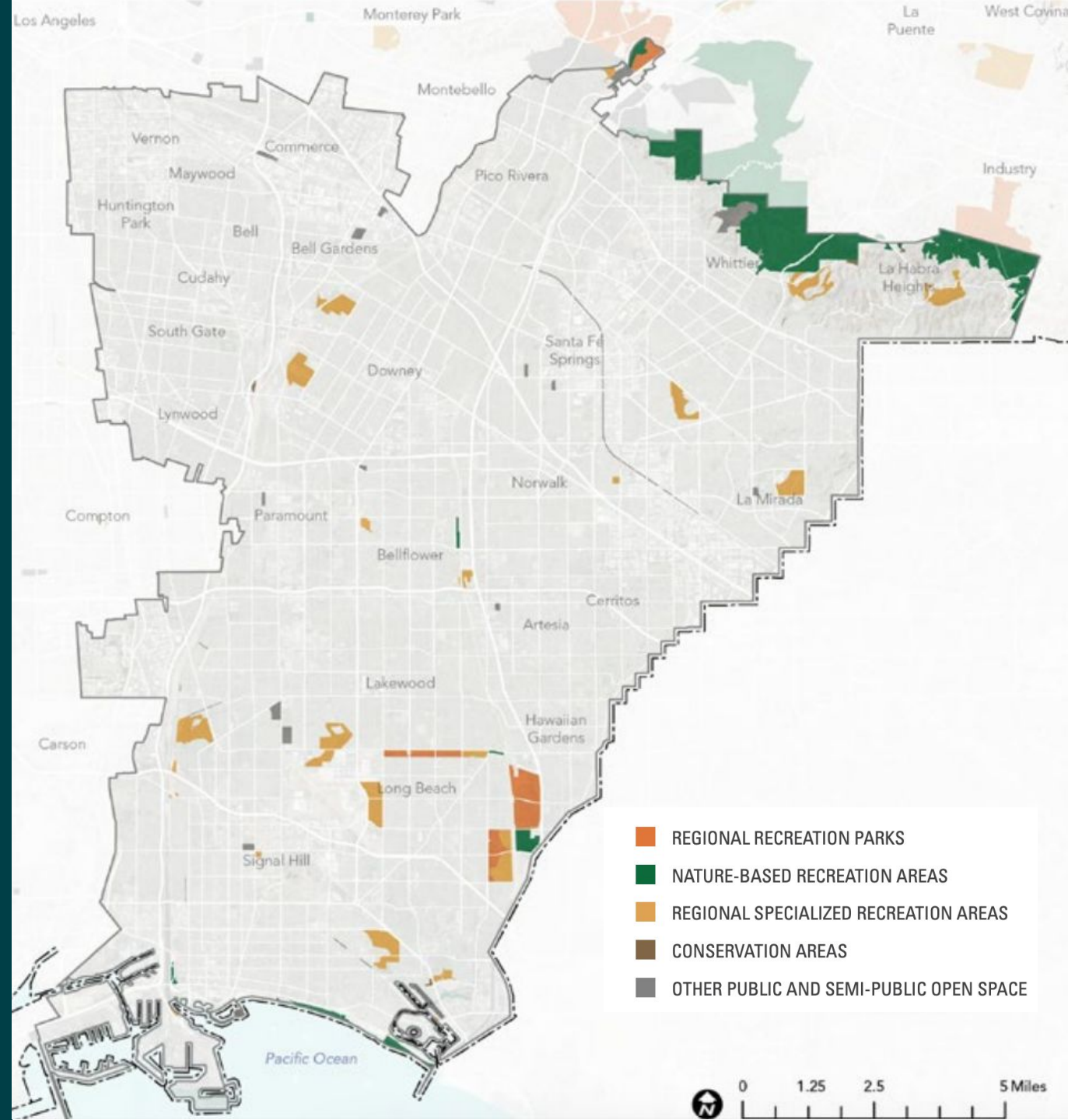
*\*Includes most but not all of the Lower LA River Watershed*

**4%**

Of the Gateway Region is comprised of regional parks and open space.

**38%**

Of LA County is comprised of regional parks and open space.





# Regional Findings

## ANALYSIS FINDINGS

- » The area has a concentration of vulnerable populations in portions of Long Beach, Bellflower, and Whittier.
- » The area's regional recreation facilities and trails are relatively well served by public transportation due to an extensive transit network.
- » The highest rates of visitorship are found near El Dorado East Regional Park, Heartwell Park, and the coast of Long Beach.
- » High Regional Recreation Need is distributed throughout the study area primarily due to the low visitorship rates to regional recreation sites.
- » A few areas along the San Gabriel River and Los Cerritos Channel in Long Beach have been identified as priority areas for conservation.
- » Several areas, including Santa Fe Springs, Vernon, and South Gate, have been identified as priority areas for restoration due to their relatively poor environmental health.
- » The study area only has 0.08 miles of regional trails per 1,000 residents, which is significantly below the countywide average of 0.33.

## COMMUNITY ENGAGEMENT THEMES

- » Overcrowding, safety, lack of information, cost, parking and maintenance are identified as barriers to park use for residents who live in the study area.
- » Residents say they need more campsites and arboreta, access to transit and parking, better information and signage, expanded and affordable programming and facilities, and more funding and attention to infrastructure and facilities maintenance.
- » 45% of survey respondents say they are recreating outside less often due of the pandemic. 85% are looking for more recreation activities closer to home because of COVID.

# Regional Survey Findings

## Community Suggestions to Increase and Improve Visits to Regional Facilities

“Playgrounds for children would be great to have near [other] amenities.”

“Signage is old and outdated at many local and county parks, and sometimes confusing.”

“For hot summer days, splash pads are a lifesaver for families that don’t have pools or access to pools and need a place to cool down.”



### MORE SHADE

More shade structures and trees in gathering and playground spaces.



### ACCESS TO WATER

Water fountains for users and animals in parks and along trails, more splash pads and water features for cooling off, better access to lakes, wetlands and waterways in the area.



### TRANSIT OPTIONS

Provide free and more frequent transit to the beach and to other regional parks.



### ADDRESS PARKING AND CONGESTION

Provide incentives for carpooling and review parking options at popular facilities.



### ENHANCED SAFETY MEASURES

Provide more lighting at night, and patrols on trails and at facilities. Ensure visitors are adhering to social distancing and other protective measures during the pandemic.



### ADDRESS HOMELESSNESS

Expand Services to support unhoused people who use parks.



### BETTER ACCESS TO INFORMATION

More and multilingual information and media about events at Regional Parks, trail and facilities locations, available amenities and opportunities to provide input.



### IMPROVED SIGNAGE

Provide additional and interactive wayfinding, interpretive and multilingual signage in parks and along trails.



### ADA ACCESSIBILITY

Provide wheelchair and disabled accessible trails and facilities, including restrooms.



### EXPAND NATIVE AMERICAN ACCESS AND FACILITIES

Provide access to ceremonial spaces for gatherings and events and provide spaces for indigenous-led education centers and activities.



### EXPAND COMMUNITY EVENTS

Open up park spaces for the community to hold more events.



### IMPROVED MAINTENANCE AND INFRASTRUCTURE

Clean and maintain restrooms, trails and campsites, provide more picnic tables and seating.



### ADDITIONAL STAFF

Hire more representative staff to guide visitors and maintain trails and parks.



### BETTER ACCESS TO PROGRAMS

Improve the online reservation system, gather community input to improve the variety of recreation classes, and provide affordable equipment and classes for all ages, especially youth and seniors.



### MORE RECREATION FACILITIES

Extend facilities hours, provide more outdoor equipment and recreation spaces, and build additional parks, playgrounds, dog-friendly areas.



### EXPAND CONCESSIONS

Provide more concessions at parks and facilities.



### PROVIDE FREE ENTRY TO FACILITIES

Organize free days for LA County residents at sites with entry fees and prioritize access at popular sites for those who come by transit or carpool to parks.



### EXPAND AND PRESERVE GREENSPACE

More trees, pocket parks, native habitat areas, learning gardens, and natural open spaces with native and regenerative landscaping for passive recreation and viewing wildlife.



### ENHANCE PRESERVATION AND STEWARDSHIP

Organize stewardship and restoration activities at parks and along the LA River and provide more science and nature-based education.



### PARTNERSHIPS WITH COMMUNITY ORGANIZATIONS

Expand park use and greenspace access through school and community partnerships and make it easier for groups to register and use parks and facilities.

# Population Vulnerability

Population Vulnerability is assessed across 4 dimensions:

1. social vulnerability,
2. health vulnerability,
3. transportation barriers, and
4. environmental vulnerability.

## Social Barriers Dimension:



- Prevalence of:
- » Young Children
  - » Elderly
  - » Non-English Speaking Residents
  - » Single Parent Households
  - » Poverty
  - » Unemployment
  - » Majority-Minority Population

## Transportation Barriers Dimension:



- » Limited Active Commuting
- » Limited Automobile Access
- » Limited Public Transit Access
- » High Traffic Density
- » High Pedestrian Injuries

## Health Vulnerability Dimension:



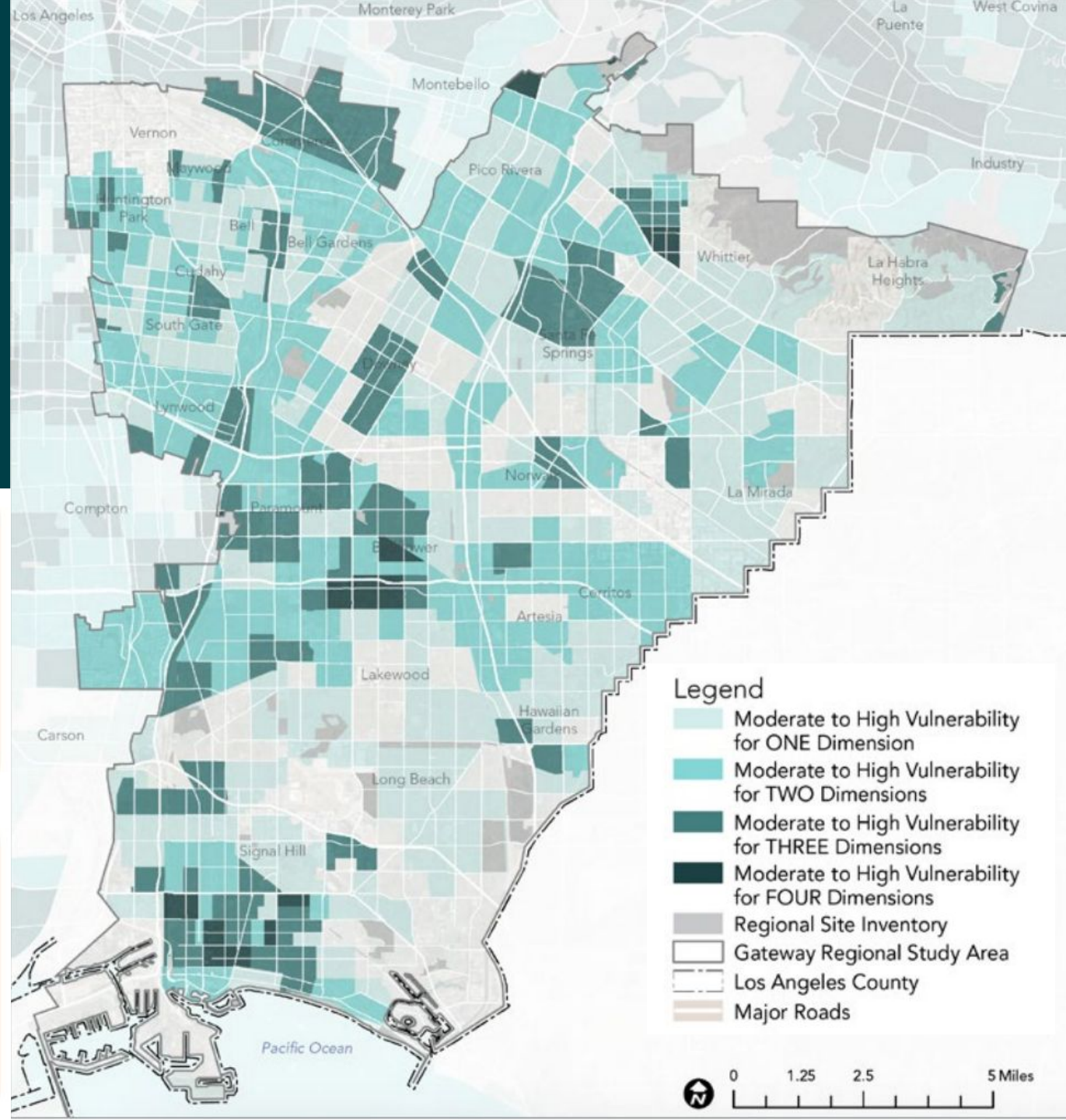
- » Reduced Life Expectancy at Birth
- » High Pollution Levels

## Environmental Vulnerability Dimension:



- » Limited Park Access
- » Limited Tree Canopy
- » High % of Impervious Surface
- » High Excessive Heat Days
- » High Urban Heat Island Index Score

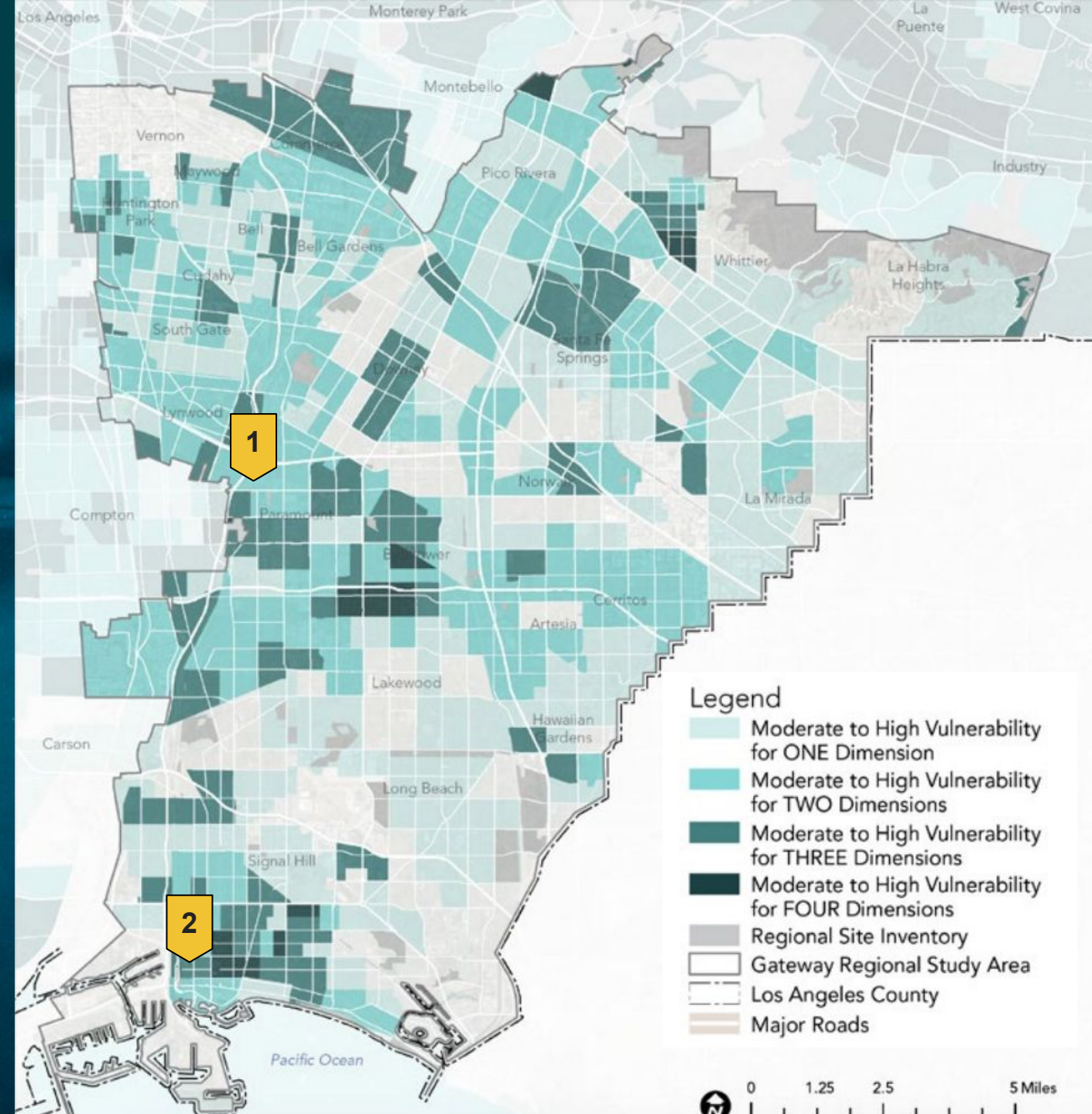
## Dimensions of Population Vulnerability



# Population Vulnerability

FY 23-24 (Under Consideration)

1. Spane Park
2. LB MUST Phase 2



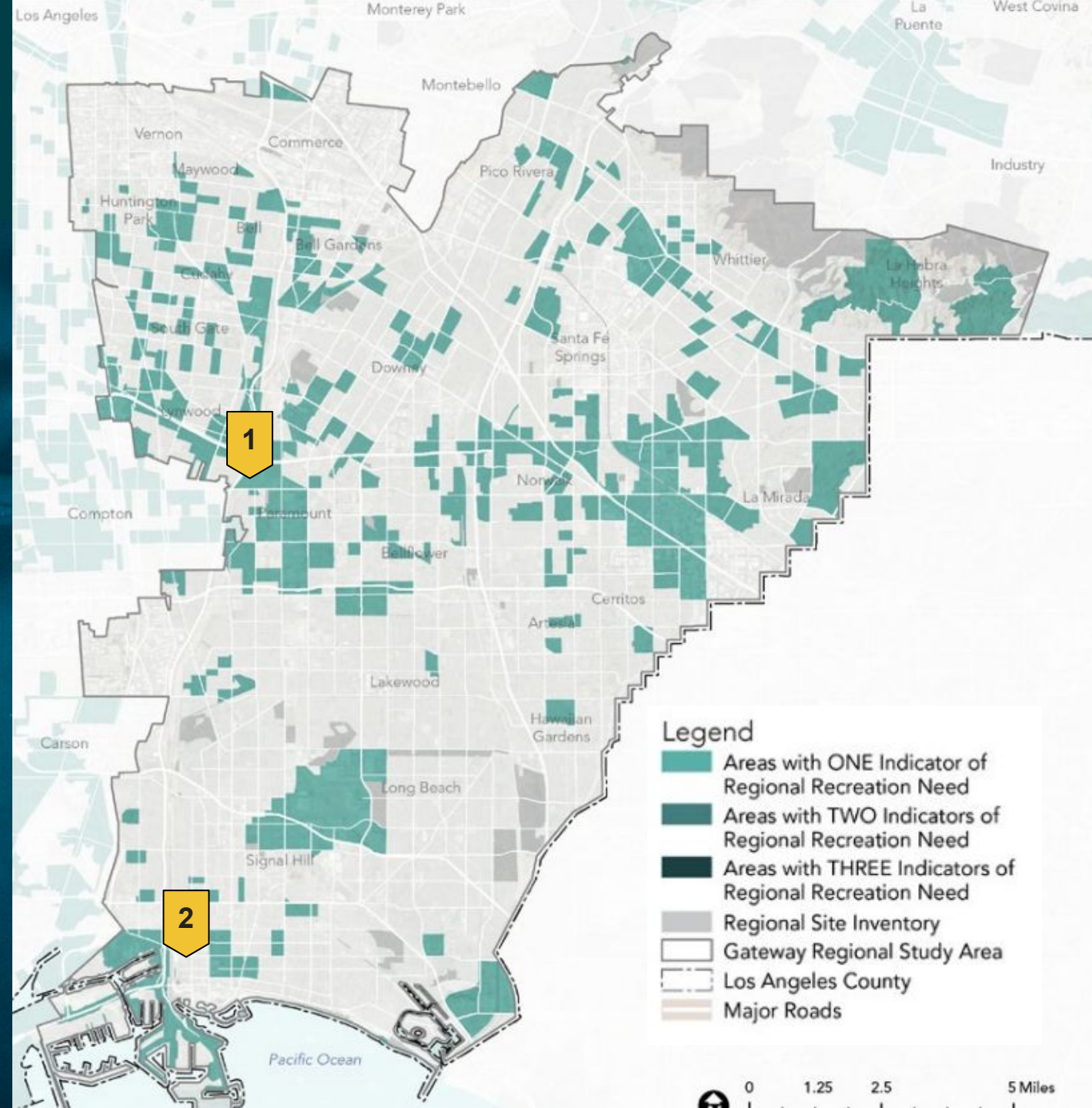
# Regional Recreation Need

FY 23-24 (Under Consideration)

1. Spane Park
2. LB MUST Phase 2

Indicators of **Regional Recreation Need** are:

- High levels of social and transportation barriers
- High levels of health and environmental vulnerability
- Low proximity to regional recreation
- Low visitorship to regional recreation sites



# Priority Areas for Restoration

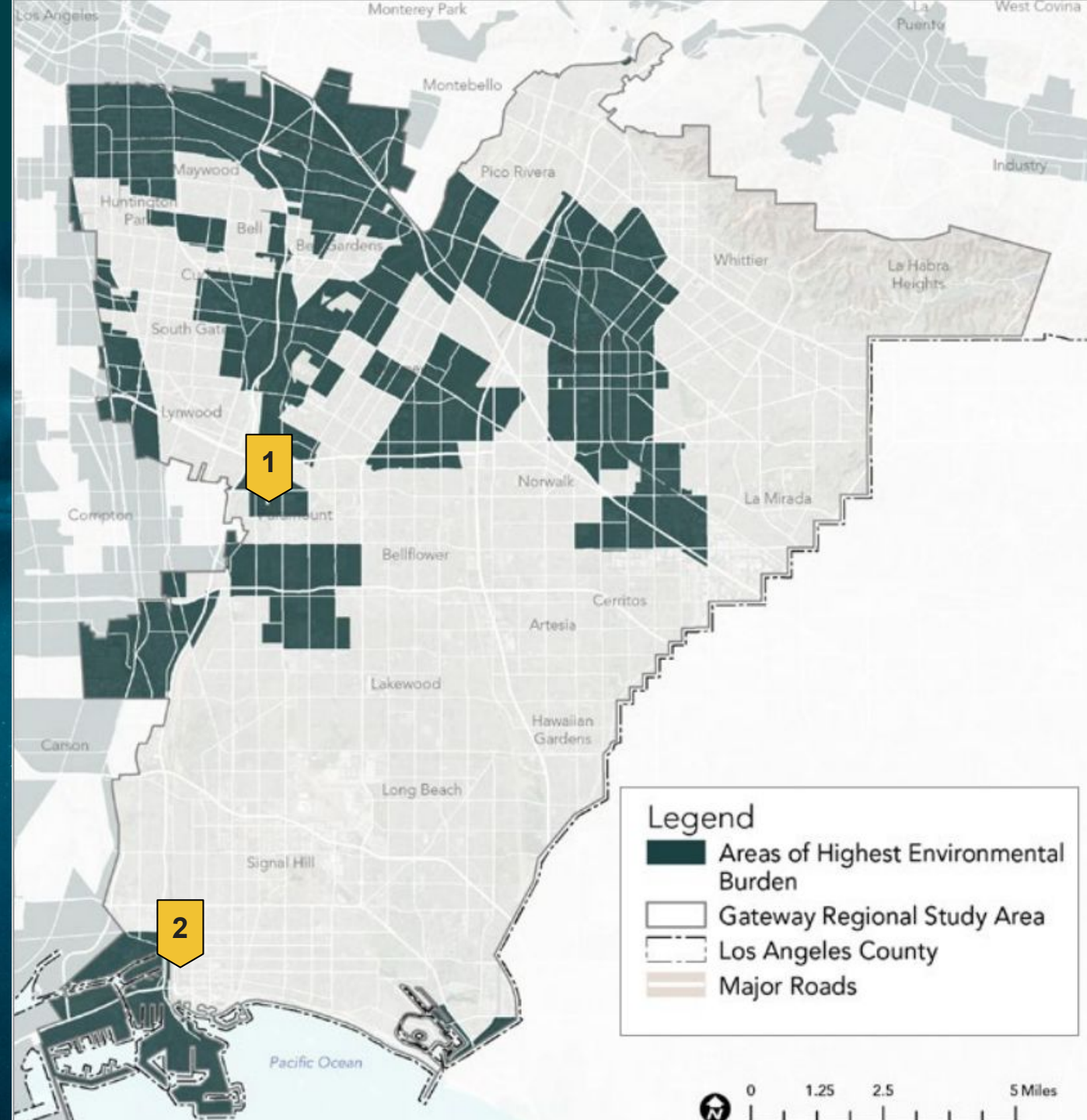
FY 23-24 (Under Consideration)

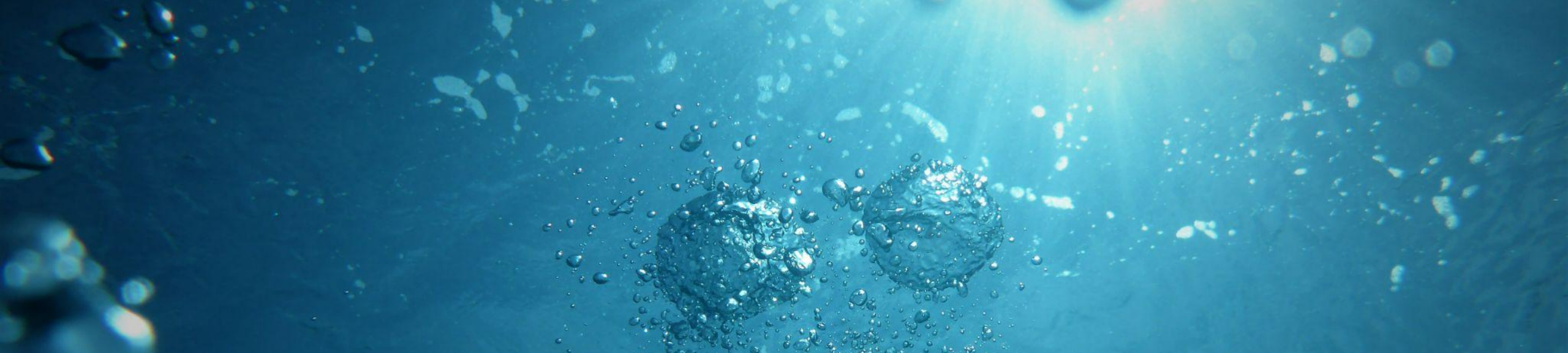
1. Spane Park
2. LB MUST Phase 2

**Priority Areas for Restoration** are areas with the most environmental burdens with respect to:

- Groundwater threat
- Hazardous waste
- Poor air and water quality
- Pollution burden

These brownfields or abandoned areas may be converted to park and open space.





# **INFRASTRUCTURE LA**



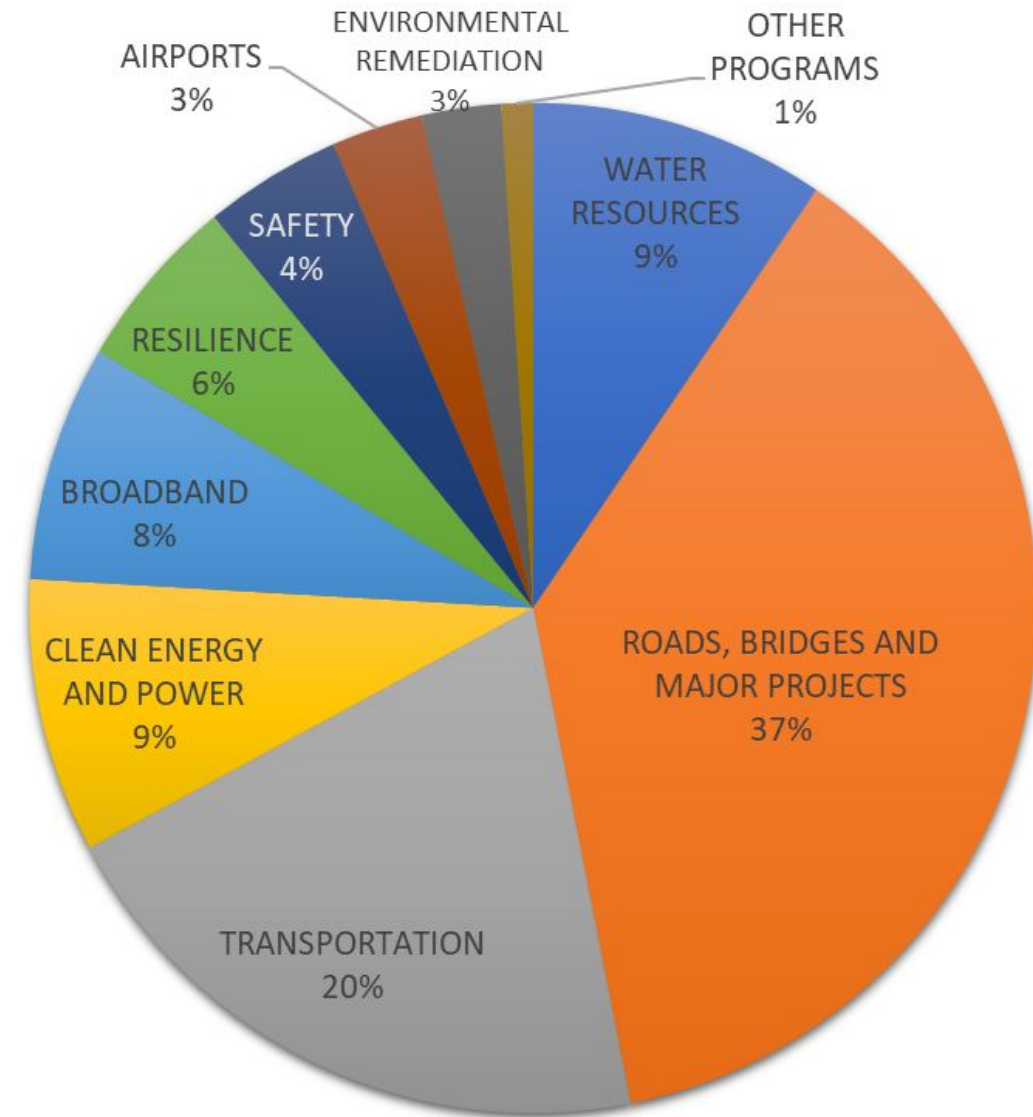
# The Bipartisan Infrastructure Law (BIL)

- Once-in-a-lifetime infrastructure funding opportunities
- **\$1 trillion over 5 years (through FY 2026)**
- Equity: Invests in un-finished communities
- Provides formula funding and competitive grants
  - California - \$48 billion in Formula Funding
  - Competitive grants - \$195 billion



# What does the infrastructure law fund?

- Provides funding for Transportation, Water, Energy, Resiliency, Sustainability, & Others
- Is compatible with Safe Clean Water projects



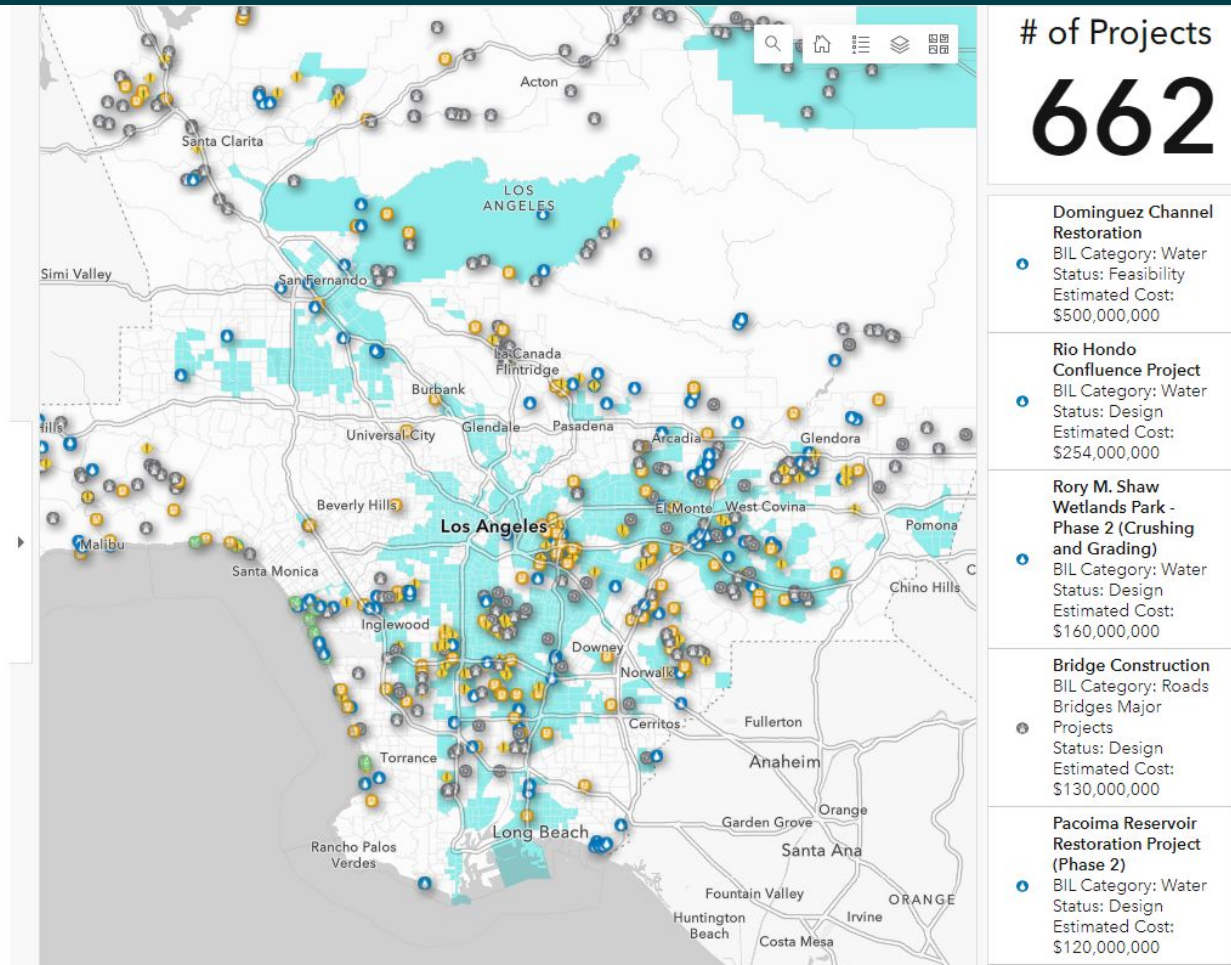
# Infrastructure LA Goals

The Infrastructure Initiative was started on April 5, 2022 at the directive of the LA County Board of Supervisors with the following goals:

- Maximize the County's share of federal infrastructure spending available through the Bipartisan Infrastructure Law.
- Pursue projects that advance equity, sustainability, and climate resilience goals.
- Encourage partnerships with infrastructure stakeholders.

# Infrastructure Initiative Project Map & Justice 40 Initiative

- Goal of 40% of all benefits invested in disadvantaged communities
- Directs Justice40 projects/program to conduct meaning community engagement
- County provides local data to supplement Justice40 data



# How can Infrastructure LA Help?

## Provide Grant Support:

- Project Identification & Collaboration Opportunities
- **Lead Regional Approach**
- Maximize Funding Received
- Project Evaluation
- LA County Board of Supervisors endorsement
- Working Group Meetings

## Contact:

TJ Moon – Infrastructure LA  
tmoon@pw.lacounty.gov  
626-476-7164

## Resources:

- Subscribe to  
InfrastructureLA@pw.lacounty.gov
- Submit Project at  
[www.InfrastructureLA.org](http://www.InfrastructureLA.org)