



# SAFE CLEAN WATER PROGRAM

Lower San Gabriel  
River Watershed

April 12, 2022  
Update



PRESENTED BY:

**OhanaVets, Inc.**  
**Lower San Gabriel River**  
**Watershed Coordinator**



# LSGR UPDATE



## GENERAL ACTIVITIES

---

## 2022 STRATEGIC OUTREACH AND ENGAGEMENT PLAN “SOEP”





# LSGR WASC WC – General Activities

1. Host of Joint Watershed Coordinator Meeting – March 23
  - a) Status and Future of State Funding – Mr. Alf Brandt
  - b) State and Federal Grant Options to Augment SCWP
  - c) WaterTalks (DACIP) for Agencies and Electeds
2. Presentation at Lower SG/Lower LA IRWM Sub-Region Meeting – March 24
3. Presentation at Gateway Water Management Authority Board – April 14
4. Continued Engagement via Community Survey and Social Media
5. Continued support and coordination with potential project applicants or organizations
6. Meetings with WASC Members
7. 2022 SOEP Update
8. Educational Outreach at Downey “Touch a Truck” event May 7



# SOEP – FY 2022 Draft Overview

## 2022 STRATEGIC OUTREACH AND ENGAGEMENT PLAN

Prepared for:  
**LOWER SAN GABRIEL RIVER  
WATERSHED AREA STEERING COMMITTEE**



Prepared by:  
**OhanaVets, Inc.**  
1040 Pacific Street, Suite E  
San Luis Obispo, CA 93401  
(805) 285-5330



Lower San Gabriel River  
Strategic Outreach and Engagement Plan

### Table of Contents

1. Introduction.....	1
2. Watershed Area Description.....	4
Physical Characteristics .....	4
Social Characteristics.....	5
SCWP Context.....	6
3. Interested Party Mapping.....	7
4. Vision for Success & Evaluation.....	10
Vision Statement .....	10
Mission .....	10
Goals .....	11
Evaluation.....	11
5. Strategies .....	12
Engage Stakeholders, Municipalities, and Community Groups .....	15
Solicit Input, Connect to Technical Assistance "TA" Opportunities.....	16
Ensure Diverse Perspectives are Shared with District/WASCS .....	17
Identify and Ensure Involvement of Members of Disadvantaged and Under-Represented Communities.....	18
Identify Educational Programming About Watershed Management, Ecological and Community Issues .....	19
6. Identify Collaborative Efforts .....	21
Attachment A – Self Inspection Checklist .....	22
Attachment B – Contact Tracking List .....	24
Attachment C – LSGR Region – Languages Spoken.....	25



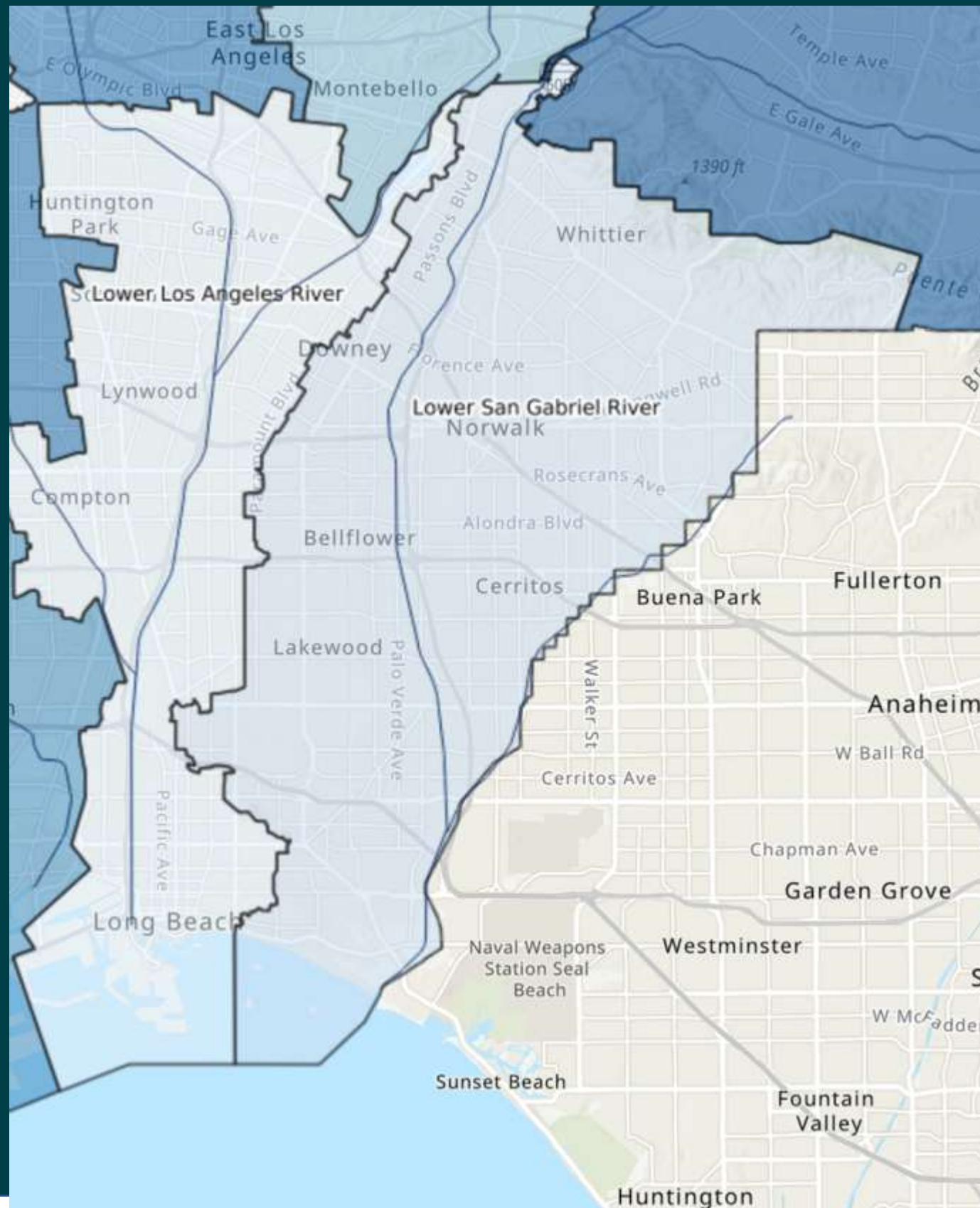




# LSGR – Watershed & Member Agencies

The Lower San Gabriel River “LSGR” Watershed Area represents the lower portion of the San Gabriel River starting at Whittier Narrows. It extends 20 miles ending at the Pacific Ocean.

LSGR is in the Gateway Region of Los Angeles County and includes 15 cities and unincorporated LA County in whole or in part.



- **Artesia**
- **Bellflower**
- **Cerritos**
- **Downey**
- **Hawaiian Gardens**
- **La Habra Heights**
- **La Mirada**
- **Lakewood**
- **Long Beach**
- **Norwalk**
- **Paramount**
- **Pico Rivera**
- **Santa Fe Springs**
- **Signal Hill**
- **Whittier**
- **Unincorporated LA County**





## SAFE CLEAN WATER PROGRAM

**PASSED AS 'MEASURE W' IN 2018**

### VISION:

By modernizing our 100-year-old water system, we can better protect public health and our environment, and maximize a cleaner, locally controlled water supply.

### HOW?

Through the funding of:

multi-benefit  
stormwater &  
urban runoff capture  
projects

### WHO?







### **CAPTURE IT**

Increase water supply



### **CLEAN IT**

Reduce volume of trash that reaches waterways and the ocean



### **MAKE IT SAFE**

Eliminate toxins and chemicals from our waterways



### **MAKE IT FOR EVERYONE**

Provide community benefits



## **PROGRAM MISSION**



# SOEP – FY 2022 Draft Overview

Table 4.1 – LSGR WASC Member Interviews with Watershed Coordinators

Member Type	Member	Affiliation	Alternate	Alt-Affiliation	Interview Status
Agency	Julian Juarez	LACFCD	Ramy Gindi	LACFCD	4/05/22
Agency	Alex Rojas	CBI/IWD	N/A	CBI/IWD	Pending
Agency	Rob Beste	WRDSC	Aimee Zhao	WRDSC	4/06/22
Agency	Kristen Ruffell	LAC Sanitation	Dr. Quynh Tran	LAC Sanitation	3/25/22
Agency	Stephen Scott	Long Beach Parks/Rec/Marine	Nancy Villaseñor	Long Beach Parks/Rec/Marine	3/28/22
Community Stakeholder	Dan Knapp	Conservation Corps of Long Beach	Irene Lopez-Muro	Conservation Corps of Long Beach	3/31/22
Community Stakeholder	Adam Galia	Resident	N/A		3/25/22
Community Stakeholder	Mark Stanley	RMC	Joseph Gonzalez	RMC	Pending
Community Stakeholder	Gabrielle Weeks	Long Beach Coalition for a Safe Environment	N/A		3/31/22
Municipal Members	Mike O'Grady	Cerritos	Rebecca Scott	Cerritos	Pending
Municipal Members	Delfino Consunji	Downey	Dan Mueller	Downey	4/01/22
Municipal Members	Lisa Ann Rapp	Lakewood	Konya Vivanti	Lakewood	4/07/22
Municipal Members	Melissa You	Long Beach	Wataru Kumagai	Long Beach	4/06/22
Municipal Members	Bernie Iniguez	City of Bellflower	Glen Kau	City of Norwalk	3/25/22
Municipal Members	Marlin Muñoz	La Mirada	N/A		4/04/22
Municipal Members	Vicki Smith	Whittier	Kyle Cason	Whittier	4/01/22

The results of the first year's conversations with WASC members identified the following potential interested parties:

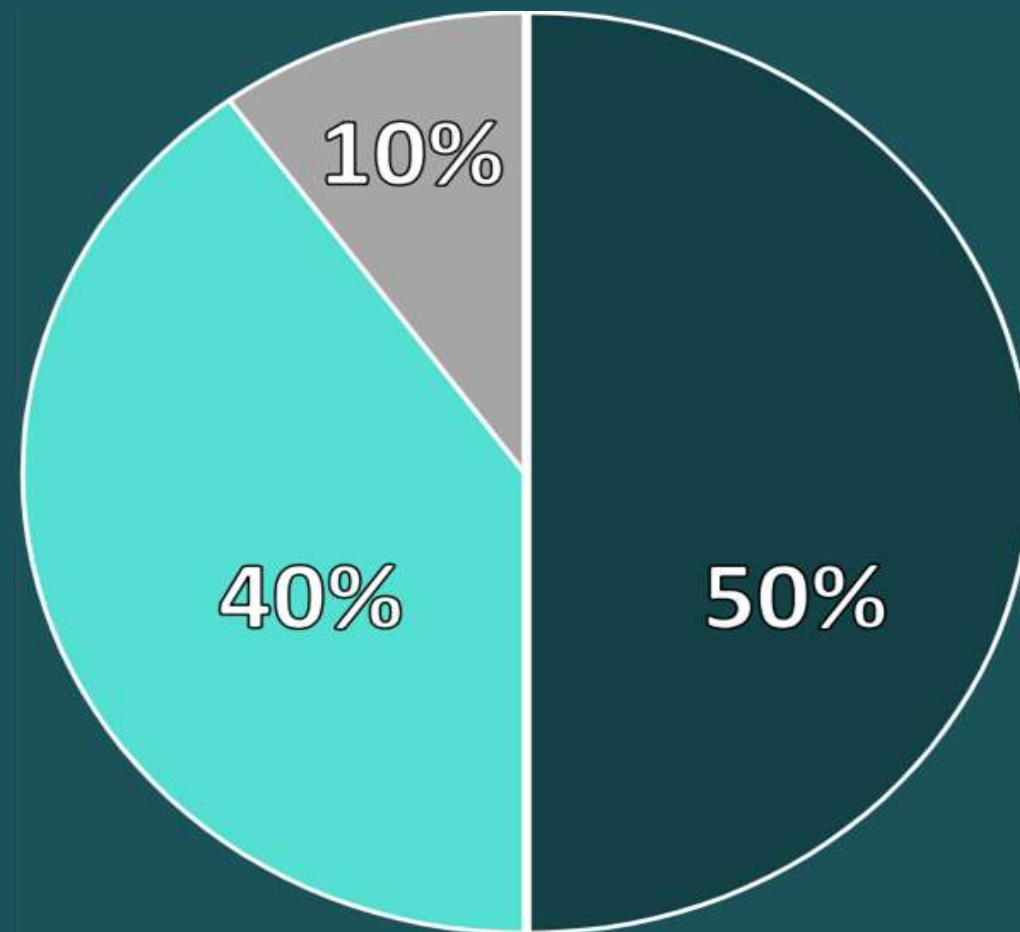
- Amigos de los Rios
- Friends of the San Gabriel River
- Los Cerritos Wetlands Stewardship
- Los Cerritos Wetlands Authority
- Los Cerritos Wetlands Land Trust
- Los Angeles Neighborhood Initiative
- River in Action
- LA County Bike Coalition
- California State University Long Beach
- Cerritos College
- California Greenworks
- Watershed Council of Health
- Tree People
- Long Beach Conservation Corps
- Heal the Bay
- Campfire LA
- Central Basin MWD Purveyors Monthly Workshop
- Korean Community Services
- Gateway Water Management Authority
- Gateway Cities Council of Governments
- ABC Unified School District and Campuses
- Chambers of Commerce Service Clubs
- Water Education for Latino Leaders "WELL"
- Watershed Conservation Authority (WCA)
- Downey School District



# SOURCE OF FUNDING:

Revenue is generated from a special parcel tax.

2.5 cents per square foot of impermeable surface area properties  
in the LA County Flood Control District.



**Regional Program**

(50% ~ \$142.5M annually)

**Municipal Program**

(40% ~ \$114M annually)

**District Program**

(10% ~ \$28.5M annually)

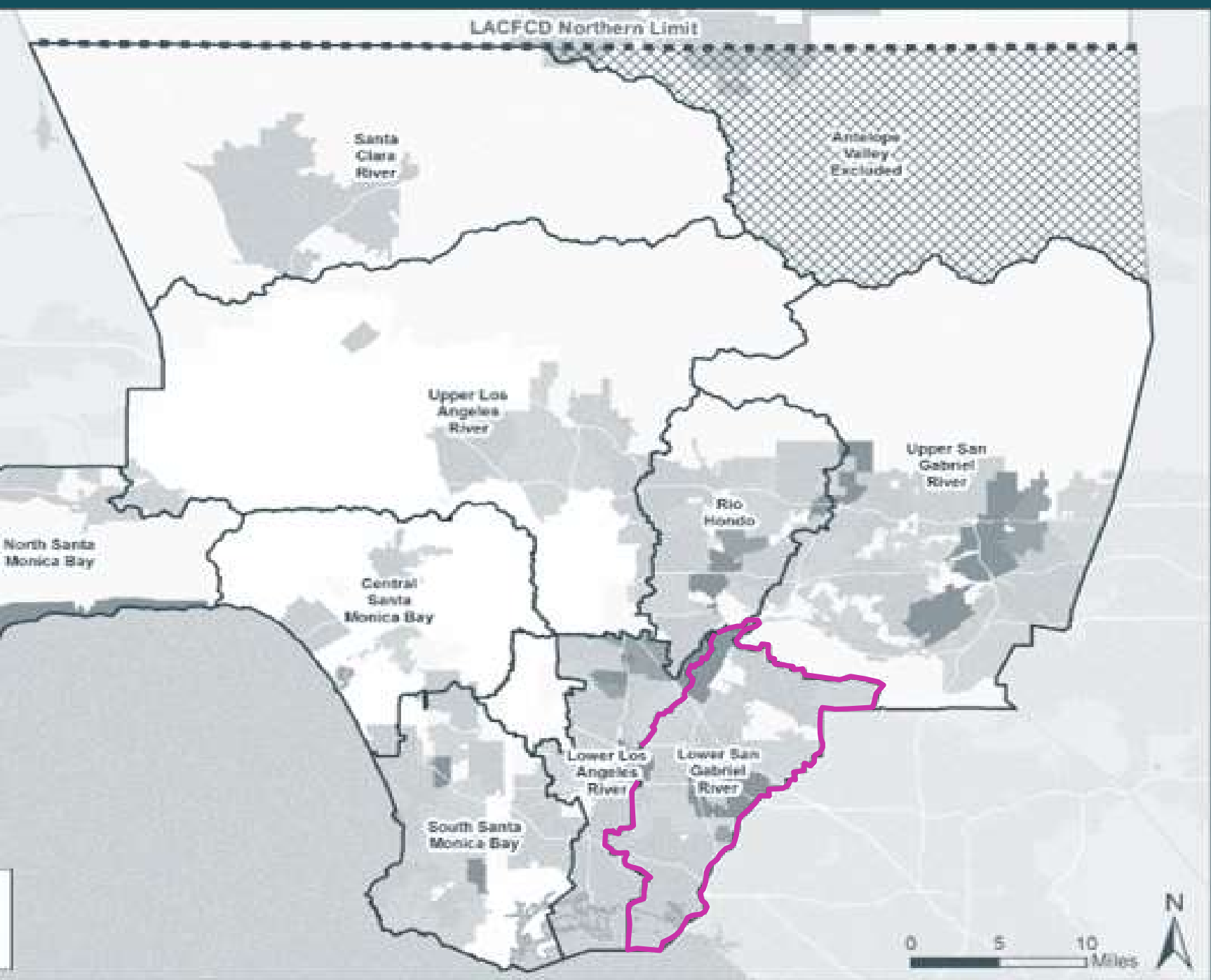
---

Total Program: Approx. \$285M annually



# REGIONAL PROGRAM ANNUAL FUNDING DISTRIBUTION

The percentage of funds received by each Watershed Area is proportional to the tax revenues collected within its boundaries



WATERSHED NAME	2020-21 REGIONAL TAX RETURN ESTIMATES
Central Santa Monica Bay	\$17.42M
Lower Los Angeles River	\$12.72M
Lower San Gabriel River	\$16.56M
North Santa Monica Bay	\$1.83M
Rio Hondo	\$11.49M
Santa Clara River	\$5.87M
South Santa Monica Bay	\$17.58M
Upper Los Angeles River	\$38.44M
Upper San Gabriel River	\$18.78M
ANNUAL REGIONAL TOTAL:	\$140.6M



An aerial photograph of a crowded beach. The top half of the image shows a wide expanse of golden sand with numerous people scattered across it. Some are sitting on towels or blankets, while others are standing. Long, dark shadows are cast across the sand, indicating it is either early morning or late afternoon. A few colorful beach umbrellas are visible, including a prominent red one in the center. The bottom half of the image shows the ocean with waves breaking onto the shore. The water is a deep blue-green, and the white foam of the waves contrasts with the darker water. The shoreline is irregular, with some people standing near the water's edge.

# WATERSHED COORDINATOR ROLE



# WATERSHED COORDINATOR ROLE:

1

## **Solicit & Support New Projects**

Identify parties with project ideas & connect them with the Technical Resources Program

2

## **Community Engagement**

Gather input on community needs that SCW projects can help fulfill

3

## **Public Education**

Educate the public about SCWP projects in their communities  
+  
Inform community members about how they can voice their input



# PROJECT DEVELOPMENT PROCESS:



Anticipated Total Time Elapsed: 26 - 40 Months



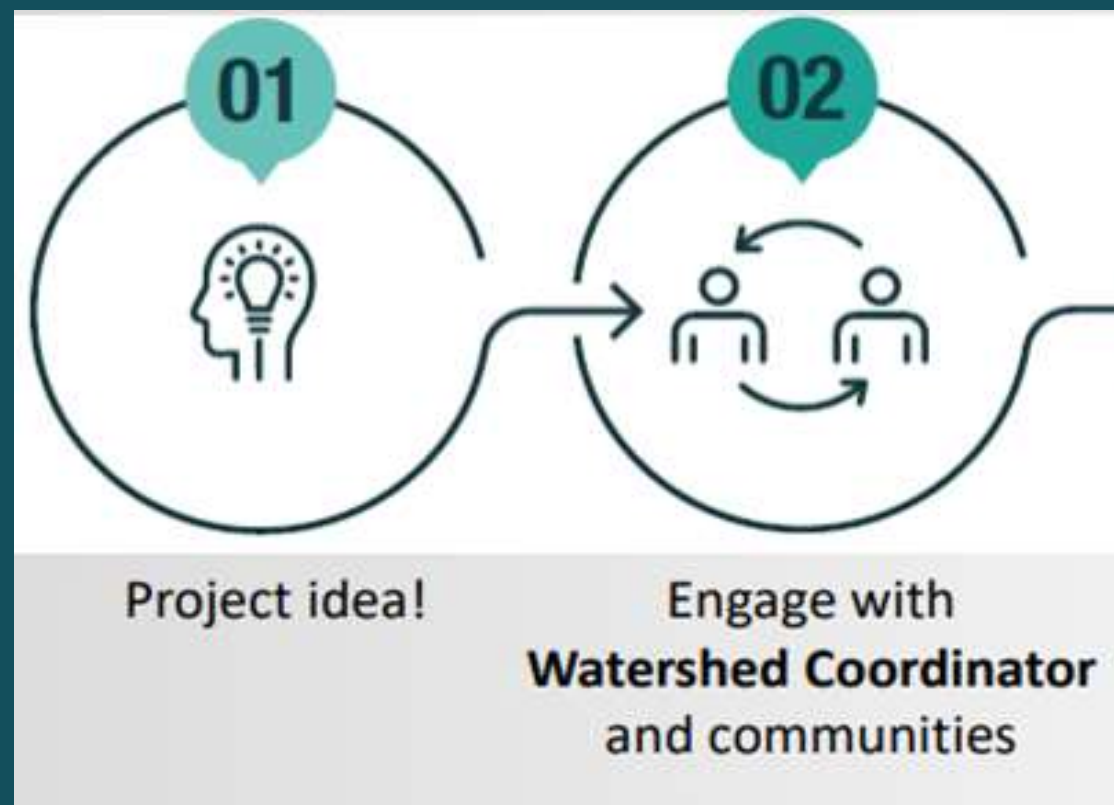


# HAVE A PROJECT IDEA?

- ENGAGE WATERSHED COORDINATOR
- DEVELOP COMMUNITY ENGAGEMENT APPROACH
- DEVELOP PROJECT BENEFITS SUCH AS:



## STEPS: 1 & 2



Improving flood management



Enhancing natural habitat and wetlands



Increasing public access to waterways



Creating new recreational opportunities



Enhancing green spaces at schools



Reducing local heat island effect



Increasing vegetation and tree cover



# COMMUNITY ENGAGEMENT AND PROJECT SCORING CRITERIA

Projects must achieve a score of **at least 60 out of 110** to be considered for funding

Section	Score Range
A.1 Wet + Dry Weather Water Quality Benefits	50 points max
-OR-	
A.2 Dry Weather Only Water Quality Benefits	40 points max
B. Significant Water Supply Benefits	25 points max
C. Community Investments Benefits	10 points max
D. Nature-Based Solutions	15 points max
E. Leveraging Funds and Community Support	10 points max
TOTAL	110 points





# SCWP Ordinance – Regional Program Highlights

“Shall be programmed, to the extent feasible, such that **each Municipality receives benefits in proportion to the funds generated** within their jurisdiction...”

“Shall be allocated such that funding for Projects that provide **a DAC Benefit is not less than one hundred ten percent (110%) of the ratio of the DAC population** to the total population in each Watershed Area;”

“Shall be programmed, to the extent feasible, such that **a spectrum of project types and sizes are implemented** throughout the region;”

“Shall be programmed, to the extent feasible, such that **Nature-Based Solutions are prioritized;**”

“Shall be disbursed to a non-municipal Infrastructure Program Project Applicant only after the Infrastructure Program **Project Applicant has secured a letter of support from the Municipality** in which the Project is located;”

“Shall be prioritized and spent on Projects that, to the extent feasible, **assist in achieving compliance with [MS4 Permit]...**”



# WORKSHOPS



**COMMUNITY ENGAGEMENT**  
A crucial part of any Safe Clean Water Application



**Phase 1: Community Engagement**

2

## Community Engagement

Gather input on community needs that SCW projects can help fulfill

### WaterTalks | What is it?

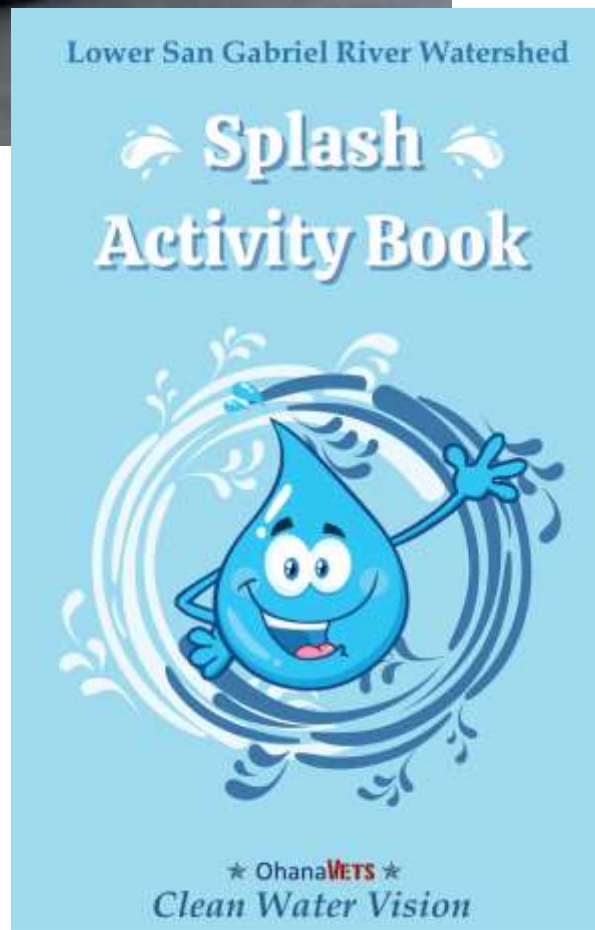
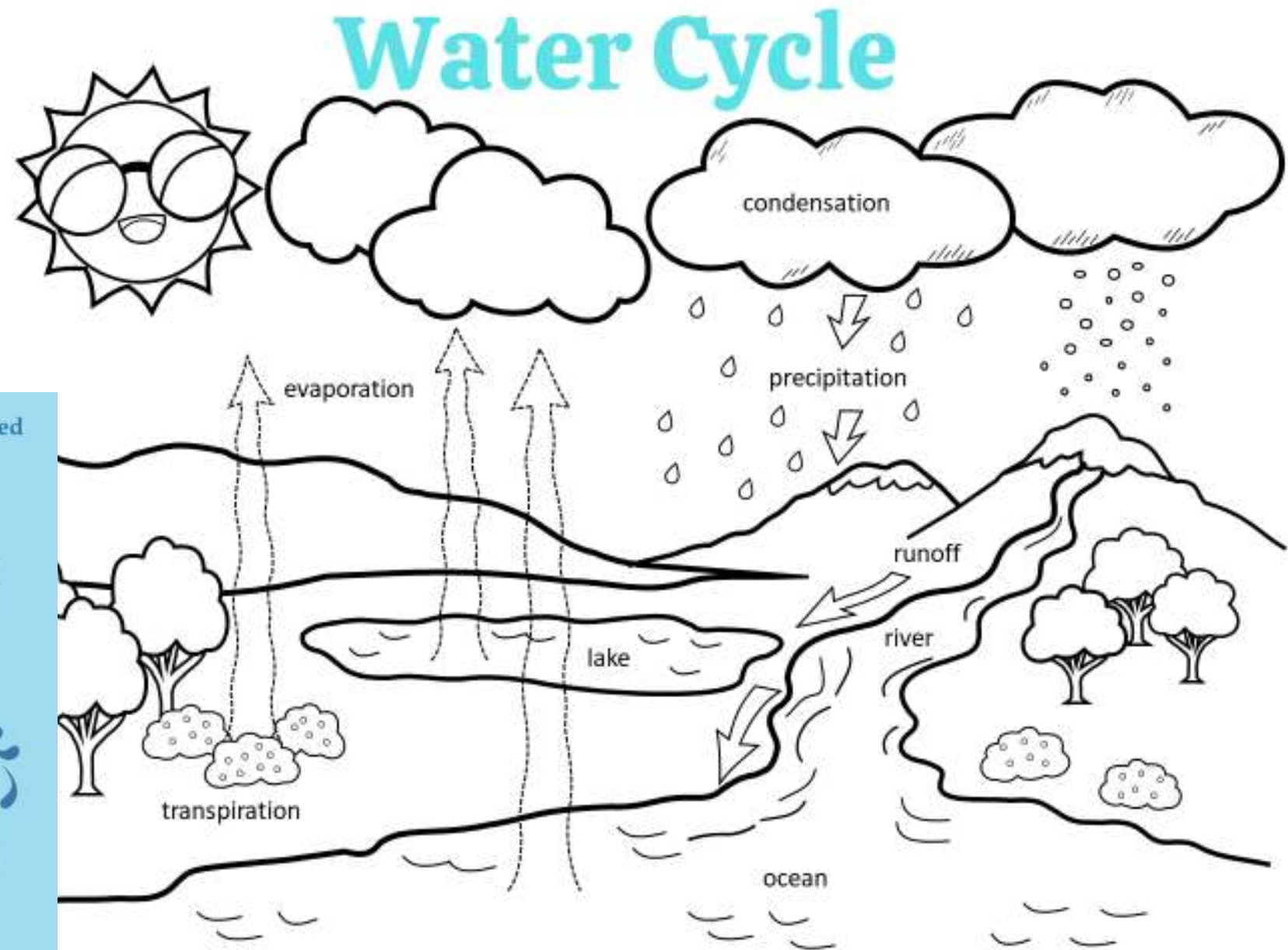
**DACTI (Disadvantaged Community and Tribal Involvement Program) in Greater Los Angeles County (GLAC) region - 3 IRWM Regions**

- State of California Proposition 1 Water Bond and Integrated Regional Water Management
  - One of the largest state funded water equity projects in California
  - \$4.5M for Project Development
  - \$9M *minimum* for Project Implementation
- Engaging 104 communities across Los Angeles County
  - Economic and environmental distress
  - Participate as equals in planning for local green infrastructure and water sustainability projects





# EDUCATIONAL OUTREACH EVENTS



3

## Public Education

Educate the public about SCWP projects in their communities



# EDUCATIONAL OUTREACH EVENTS

3

## Public Education

Educate the public about SCWP projects in their communities





# EDUCATIONAL OUTREACH EVENTS

3

## Public Education

Educate the public about SCWP projects in their communities







## HOW WE CAN SUPPORT YOU:

- Guide you in developing a project concept
- Help identify a public agency to “own” the project
- Provide guidance on applying for technical resource funding and on effectively engaging the community with a project concept
- Help identify cost-share partners





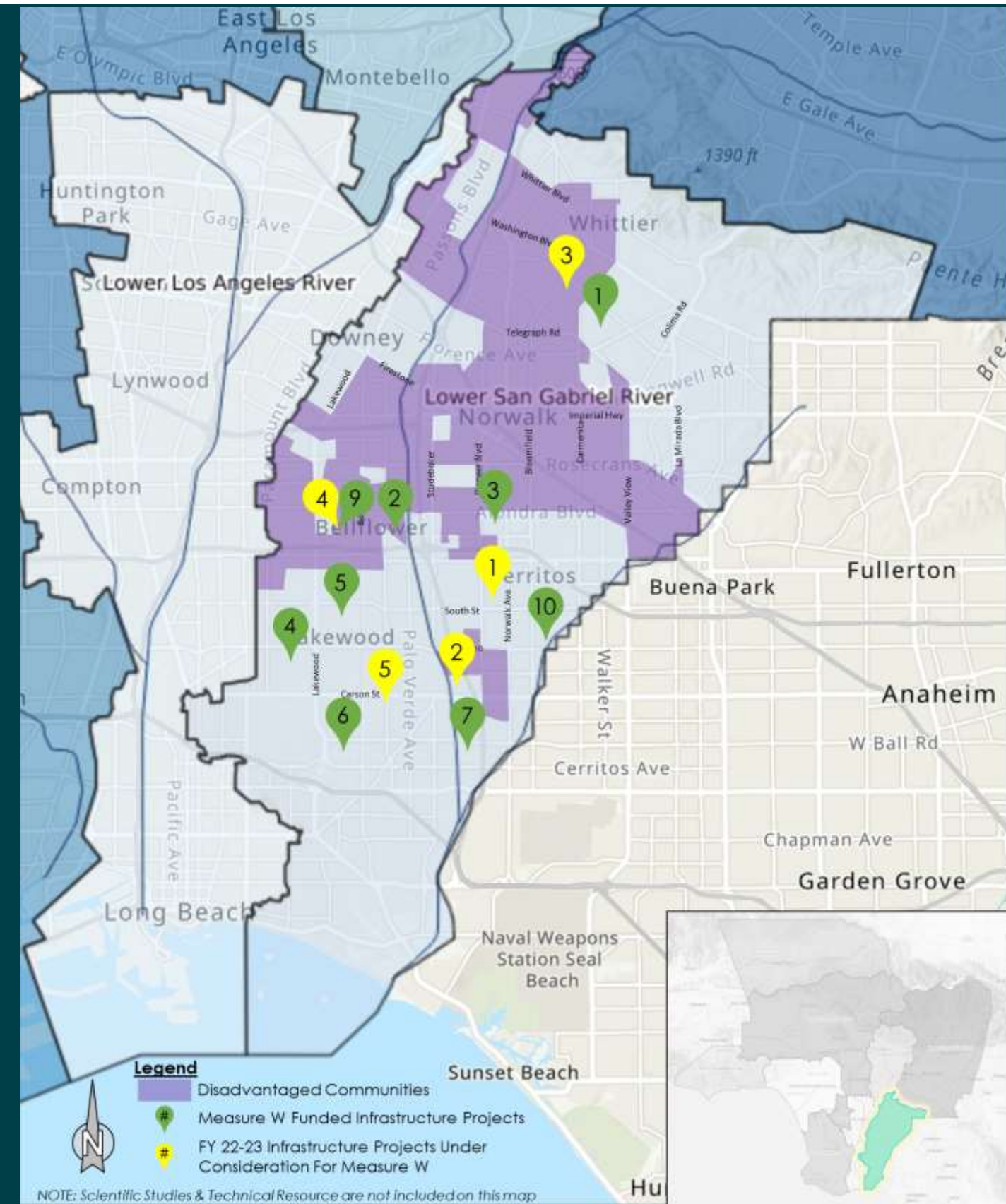
# PROJECTS







# LSGR – SCWP PROJECTS FUNDED AND UNDER CONSIDERATION



	Project Name	BMP Type	Planning/Design	Construction	O&M	Technical Resource/Scientific Study	Capital Cost	Cost Share	Measure W Funding	SIP Year	Project Developer
			\$M	\$M	\$M	\$M	\$M	\$M	\$M		
Funded	1 Adventure Park Multi-Benefit Stormwater Capture	D		\$ 13.5			\$ 28.5	\$ 15.0	\$ 13.5	20-21	Unincorp. County Area of Whittier
	2 Caruthers Park	I			\$ 0.9			\$ 13.0	\$ 0.9	20-21	Bellflower
	3 Hermosillo Park	I	\$ 4.1	\$ 16.0			\$ 20.1		\$ 20.1	20-21	Norwalk
	4 Bolivar Park	I			\$ 1.3		\$ 11.0	\$ 11.0	\$ 1.3	20-21	Lakewood
	5 Mayfair Park	T			\$ 1.3		\$ 14.4	\$ 15.0	\$ 1.3	20-21	Lakewood
	6 Skylinks Golf Course at Wardlow Stormwater Capture Project	T	\$ 2.7	\$ 7.8			\$ 10.5		\$ 10.4	20-21	Long Beach
	7 El Dorado Regional Project	T	\$ 3.0				\$ 11.8	\$ 100.0	\$ 3.0	20-21	Long Beach
	8 Watershed Coordinator	TR				\$ 1.0			\$ 1.0	20-21	LACFCD
	9 Bellflower Simms Park Stormwater Capture	T	\$ 2.1				\$ 18.7	\$ 5.6	\$ 2.1	21-22	Bellflower
	10 Cerritos Sports Complex	T	\$ 2.4				\$ 26.2		\$ 2.4	21-22	Cerritos
	11 Gateway Area Path Finding Analysis	SS				\$ 0.1			\$ 0.1	21-22	GWMA
	12 Sorensen Park Multi-Benefit	SS				\$ 0.3			\$ 0.3	21-22	LA County PW
Funded Subtotal			\$ 14.3	\$ 37.3	\$ 3.4	\$ 1.4	\$ 141.2	\$ 159.6	\$ 56.4		
Projects Under Consideration	1 Artesia Park Stormwater Capture	T	\$ 1.3						\$ 1.3	22-23	Artesia
	2 Lakewood Equestrian Center	T	\$ 1.1					\$ 0.4	\$ 1.1	22-23	Lakewood
	3 York Field Stormwater Capture	I	\$ 1.9					\$ 0.6	\$ 1.9	22-23	Whittier
	4 Bellflower Simms Park Stormwater Capture	T		\$ 15.7				\$ 0.9	\$ 15.7	22-23	Bellflower
	5 Heartwell Park at Clark Channel	T	\$ 2.8	\$ 21.1					\$ 23.9	22-23	Long Beach
	6 Community Centered Optimization of Nature Based BMP	SS				\$ 0.8			\$ 0.8	22-23	Dr. S. Eftekharzadeh
	7 Microplastics in LA County Stormwater	SS				\$ 0.2		\$ 0.1	\$ 0.2	22-23	Dr. A. Gray, UC Riverside
	8 Regional Pathogen Reduction	SS				\$ 1.0			\$ 1.0	22-23	GWMA
	9 Gateway Area Path Finding Analysis Ph 2	SS				\$ 0.2			\$ 0.2	22-23	GWMA
	10 Community Garden Stormwater Capture Investigation	SS				\$ 0.4			\$ 0.4	22-23	LA Community Garden Council
Projects Under Consideration Subtotal			\$ 7.1	\$ 36.7	\$ -	\$ 2.6	\$ -	\$ 2.0	\$ 46.4		
Total			\$ 21.4	\$ 74.0	\$ 3.4	\$ 4.0	\$ 141.2	\$ 161.6	\$ 102.8		

BMP Type Legend: D= Diversion to Sanitary Sewer; I = Infiltration Facility; T = Treatment Facility; TR = Technical Resource; SS = Scientific Study



# LSGR INFRASTRUCTURE PROJECT EXAMPLE

## SKYLINKS MULTI-BENEFIT STORMWATER CAPTURE PROJECT

A multi-benefit stormwater capture project located at Skylinks Golf Course in Long Beach.

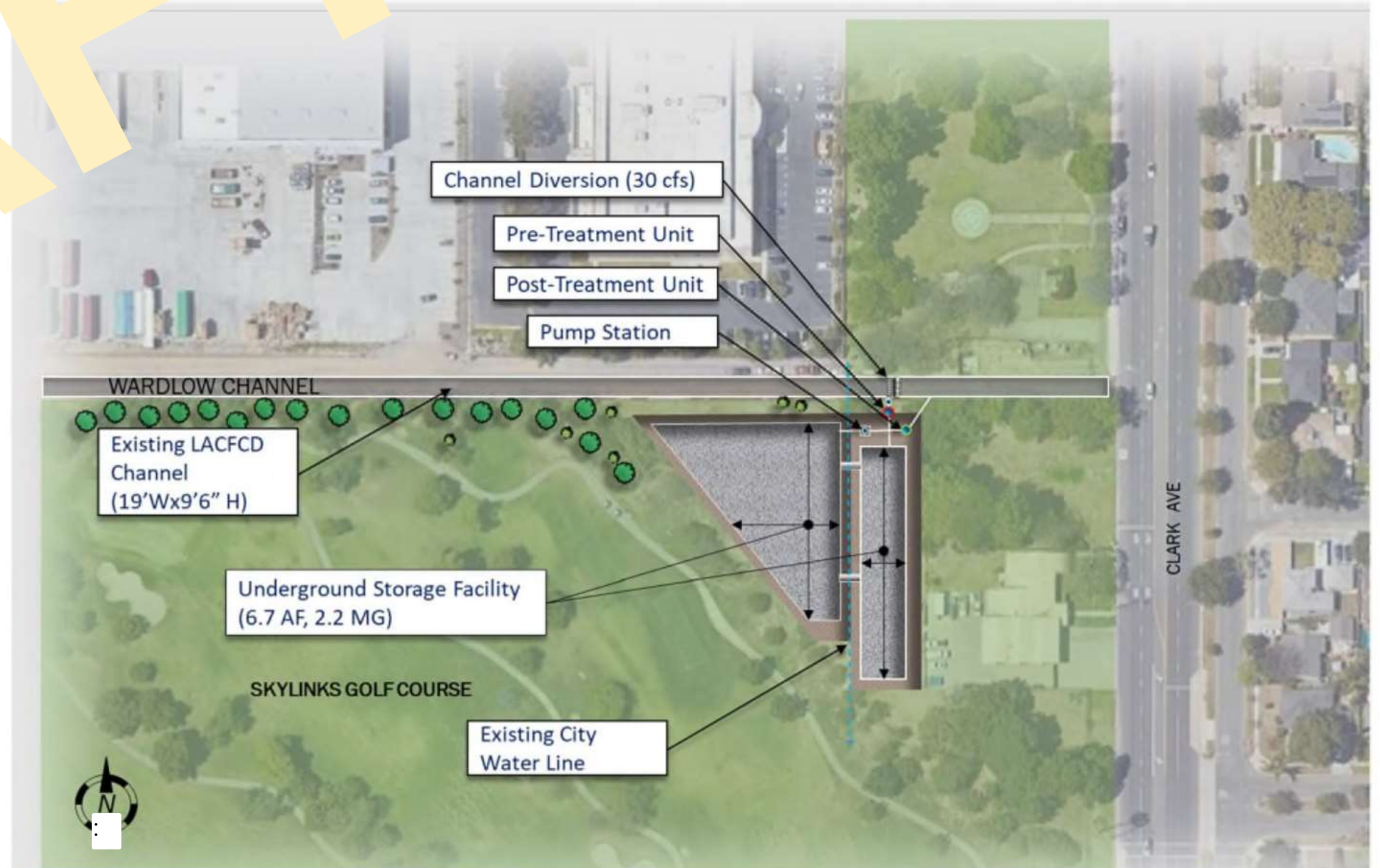
FUNDED IN: 2020

AMOUNT: \$10.5 million (Design & Construction)

PROJECT ID: C-100-20-0001  
WATERSHED: Lower San Gabriel River

### PROJECT FEATURES:

- Integrating gallery beneath park
- Captures water and recharge groundwater aquifer
- Creates new active park space and landscaping
- Provides greening benefits
- Signage providing educational information



**Figure 2.** Conceptual layout configuration for Skylinks Golf Course project.



# LSGR INFRASTRUCTURE PROJECT EXAMPLE

## Lakewood Equestrian Center Project

Along the Lower San Gabriel River, X acres of post-industrial land will become the centerpiece of a community-driven revitalization effort. The Lakewood Equestrian Center Project is a multi-benefit park with a wetland for capturing heavy-weather runoff and significant new habitat and recreational features located at X-P in Lakewood.

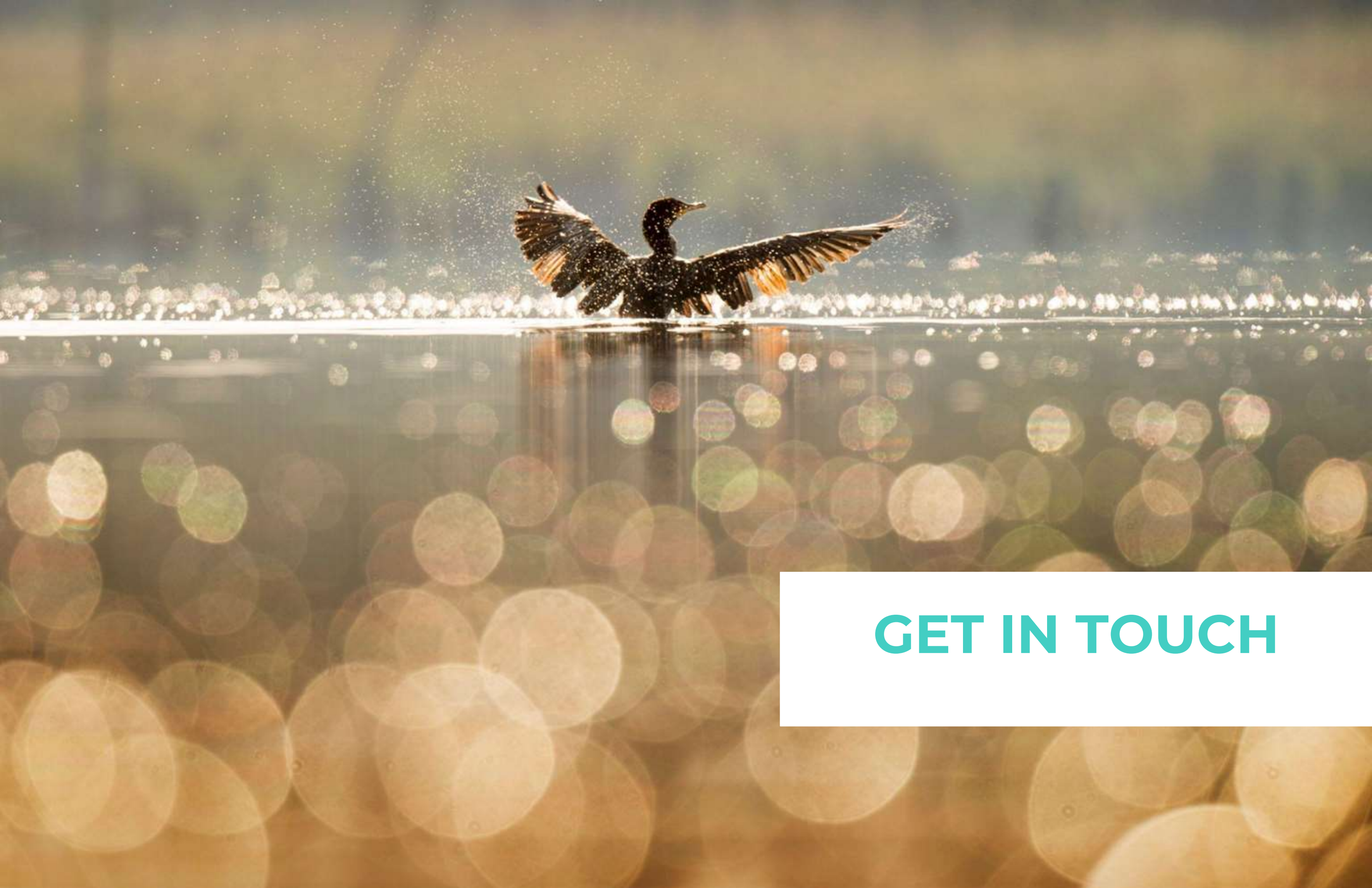
FIGURE 9  
AMOUNT: \$0.1 million Concepts and Feasibility Study  
PROJECT LEAD: City of Lakewood  
WATERBODIES: Lower San Gabriel River

### PROJECT FEATURES:

- Infiltration gallery beneath park
- Captures water and recharge groundwater aquifer
- Creates new active park space and landscaping
- Provides greening benefits
- Signage providing educational information







**GET IN TOUCH**



# Clean Water Vision

Get Involved! Share your ideas with us!

Sign up for Lower San Gabriel River  
Watershed Area Information and Events!

Visit us at:

**[cleanwatervision.com](http://cleanwatervision.com)**

Email us at:

**[lsgr@ohanavets.com](mailto:lsgr@ohanavets.com)**

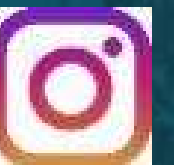
Follow us on social media!

**[@lsgrwatershed](https://twitter.com/lsgrwatershed)**  
**[@lsgr\\_watershed](https://www.instagram.com/lsgr_watershed)**

Community Outreach  
Ideas?

Project Ideas?

Partnership  
Ideas?





# TAKE OUR 2 MINUTE COMMUNITY NEEDS SURVEY

What water issues concern you the most?

What does your community need more of?

What outdoor areas need improvement?

LSGR Watershed Area  
Community Survey

[www.cleanwatervision.com](http://www.cleanwatervision.com)





# Next steps



- ✓ 4/13 – Distribute Draft 2022 SOEP
- ✓ 4/13 thru 4/29 – SOEP Comment Period
- ✓ 5/10 – Request Approval of SOEP