

# STRATEGIC OUTREACH AND ENGAGEMENT PLAN



Prepared for:

**LOWER SAN GABRIEL RIVER  
WATERSHED AREA STEERING COMMITTEE**

Prepared by:

**OhanaVets, Inc.**

1040 Pacific Street, Suite E  
San Luis Obispo, CA 93401  
(805) 285-5330



July 13, 2021

# Table of Contents

1. Introduction.....	1
2. Watershed Area Description.....	4
Physical Characteristics.....	4
Social Characteristics .....	5
SCWP Context.....	6
3. Interested Party Mapping .....	7
4. Vision for Success & Evaluation.....	10
Vision Statement .....	10
Mission.....	10
Goals.....	11
Evaluation.....	11
5. Strategies.....	12
Engage Stakeholders, Municipalities, and Community Groups .....	15
Solicit Input, Connect to Technical Assistance "TA" Opportunities.....	16
Ensure Diverse Perspectives are Shared with District/WASCS .....	17
Identify and Ensure Involvement of Members of Disadvantaged and Under- Represented Communities .....	18
Identify Educational Programming About Watershed Management, Ecological and Community Issues .....	19
6. Identify Collaborative Efforts.....	21
Attachment A – Self Inspection Checklist.....	22
Attachment B – Contact Tracking List .....	24
Attachment C – LSGR Region – Languages Spoken .....	25



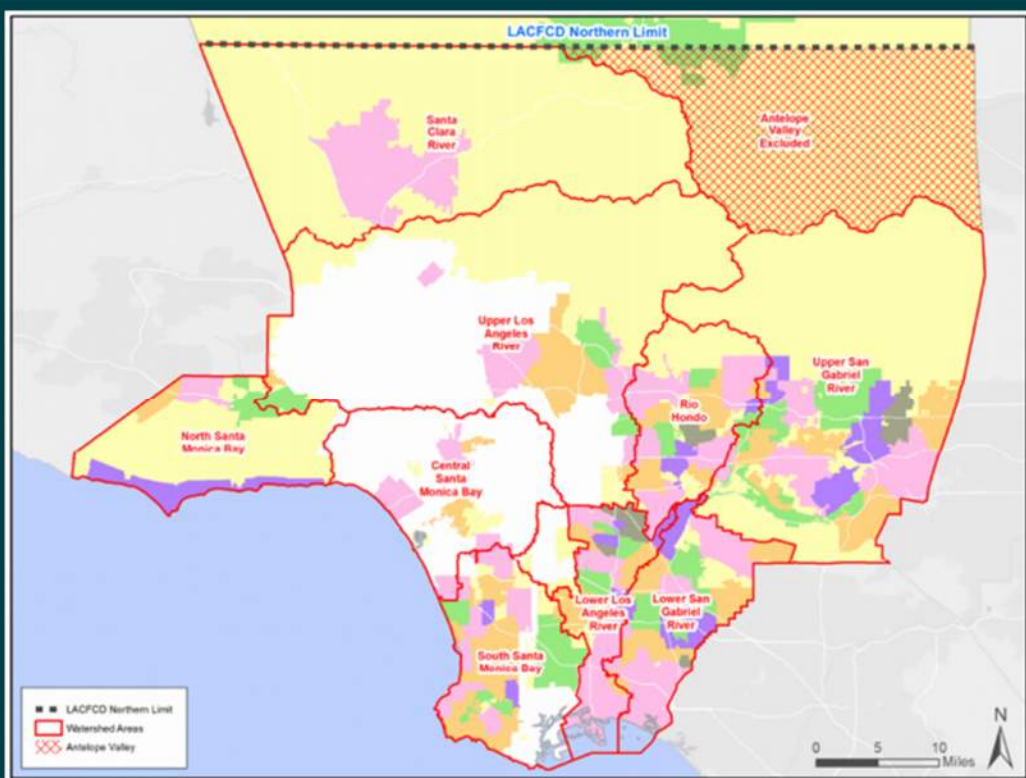


# Section 1 Introduction

# 1. Introduction

Many may ask what is a watershed? In simple terms, it is an area of land with streams and rivers that drain into larger bodies of water such as rivers, lakes or even oceans. The land is in an upstream area that contributes and collects surface water runoff which then flows downstream. Looking at it in even closer yields the understanding that a large watershed is usually made up of many smaller watersheds.

Why are watersheds important? Watersheds are utilized to help manage surface water resources. They provide a more holistic management approach based on the concept that the watershed is the key geographic unit for managing surface water resources. This is because it uses all of the land area that could contribute runoff to a particular water resource. Watersheds are beneficial management tools because identified water quality concerns in the downstream, larger body of water can be mitigated by actions/projects within the watershed. It would be impossible to remove all of the pollution in the ocean/bay, but understanding the contributing watershed allows us to implement projects within that region that prevent the pollution from ever reaching the ocean in the first place. Management includes reduction of trash, bacteria, and other chemicals that can flow into our rivers and ocean. It also includes collection of water that can be used to infiltrate into the groundwater aquifer, and used for irrigation or other water uses that replace the need to use potable water. Basically, it addresses water quality, water supply, and flood management.



Lower San Gabriel River  
Draft Strategic Outreach and Engagement Plan

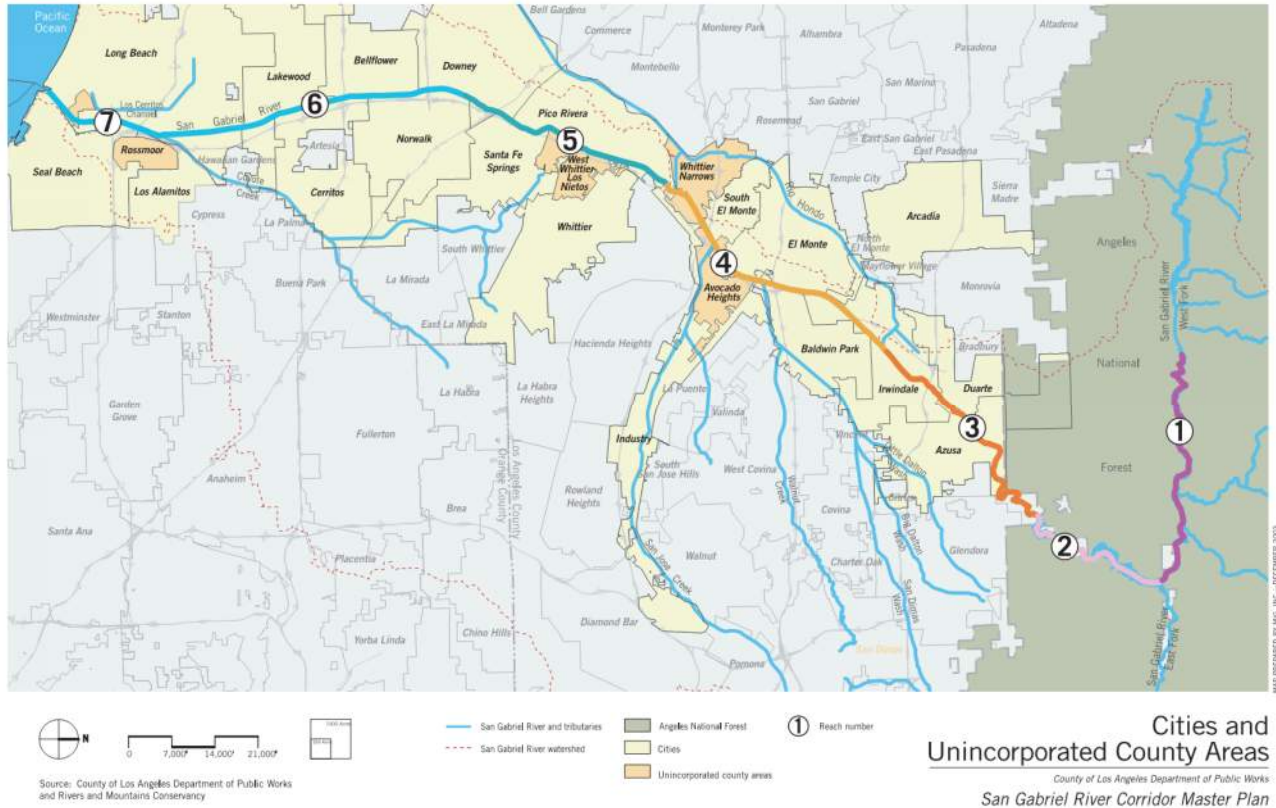
Los Angeles County has several large watershed areas that ultimately drain into the Pacific Ocean through a series of creeks, channels and rivers. In order to manage our watersheds now and into the future, in 2018, county voters approved Measure W, also known as the Safe Clean Water Program "SCWP" which provides much needed funding for the purposes of capturing water runoff during wet and dry years, reducing the levels of contamination into bodies of water, increasing the number of nature-based enhancements along the river watershed areas and addressing local community needs including and especially disadvantaged communities.

By  
modernizing  
our 100-year-  
old water  
system, we  
can better  
protect  
public health  
and our  
environment,  
and  
maximize a  
cleaner,  
locally  
controlled  
water supply



# Lower San Gabriel River Draft Strategic Outreach and Engagement Plan

This plan focuses on one of those watershed areas, namely the Lower San Gabriel River Watershed Area. The watershed area drains to the Pacific Ocean via the San Gabriel River and includes Coyote Creek and a downstream portion of the San Gabriel River. Municipalities that fall within the boundaries of this Watershed Area include: Long Beach, Lakewood, Paramount, Bellflower, Cerritos, Artesia, La Mirada, Norwalk, Downey, Santa Fe Springs, Whittier, Pico Rivera, La Habra Heights, Signal Hill, and Los Angeles County.



The purpose of this Strategic Outreach and Engagement Plan “SOEP” is to engage communities, coordinate funding opportunities, help develop project concepts, identify and educate stakeholders, develop relationships with residents, and businesses, and ultimately create more involvement in the SCWP and more specifically, the Lower San Gabriel River “LSGR” Watershed Area Steering Committee “WASC”. The creation and implementation of the SOEP relies heavily on input and feedback from WASC members and stakeholders to ensure efficient and effective methods are used to maximize success. To that end, this Plan will be reviewed and updated on an annual basis to ensure that new and great ideas are incorporated from growing interactions and involvement of citizens, communities, neighboring watershed groups and everyone who relies on having clean water now and for future generations.





## Section 2 Watershed Area Description

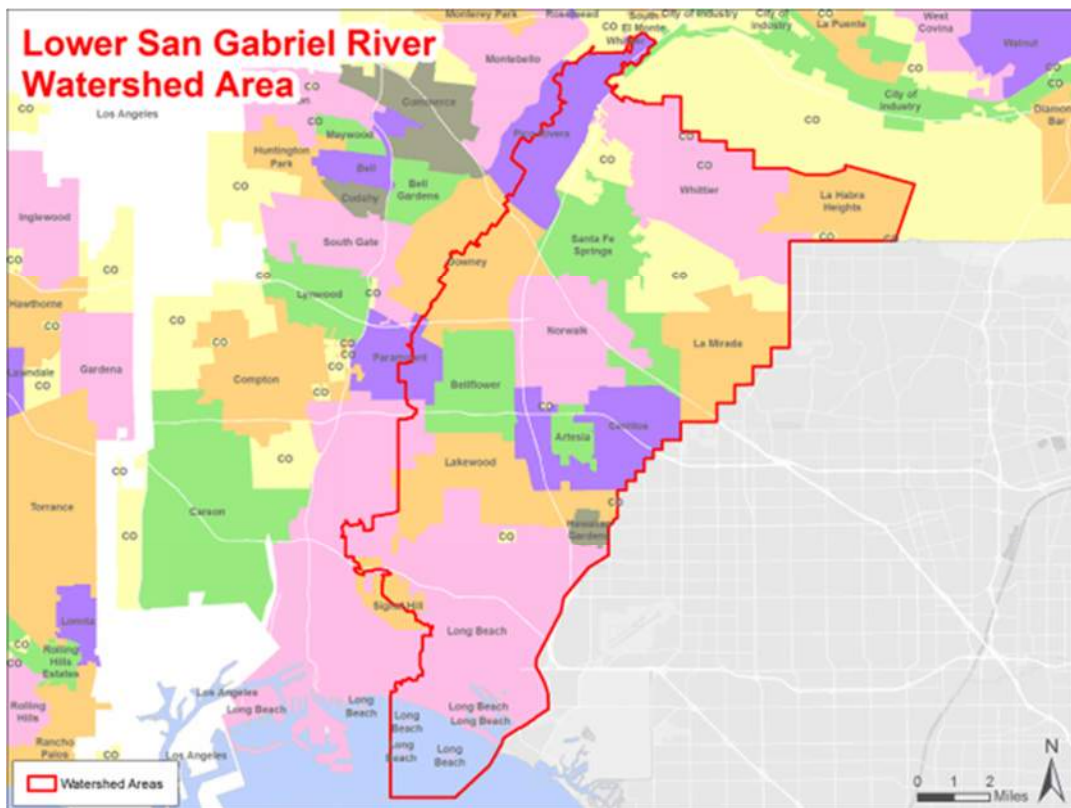
## 2. Watershed Area Description

### Physical Characteristics

The Lower San Gabriel River “LSGR” watershed represents the lower portion of the San Gabriel River. The entire San Gabriel River extends about 58 miles in total beginning at the West Fork and East Fork in the San Gabriel Mountains and ends at the Pacific Ocean. The Upper and Lower San Gabriel River Watersheds are separated by the Whittier Narrows. For purposes of this Plan, the Lower San Gabriel River is approximately 20 miles and includes the Coyote Creek Tributary as well as the Los Cerritos Channel wetlands system which is just upstream of its mouth at the Pacific Ocean.

The LSGR watershed is in the Gateway Region of Los Angeles County and includes 15 municipalities and unincorporated areas of Los Angeles County. Those cities include in whole or in part:

- Artesia
- Bellflower
- Cerritos
- Downey
- Hawaiian Gardens
- La Habra Heights
- La Mirada
- Lakewood
- Long Beach
- Norwalk
- Paramount
- Pico Rivera
- Santa Fe Springs
- Signal Hill
- Whittier
- Unincorporated Los Angeles County

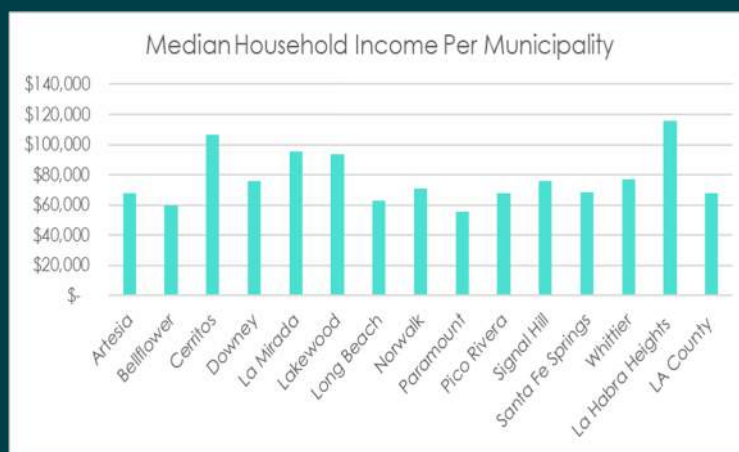
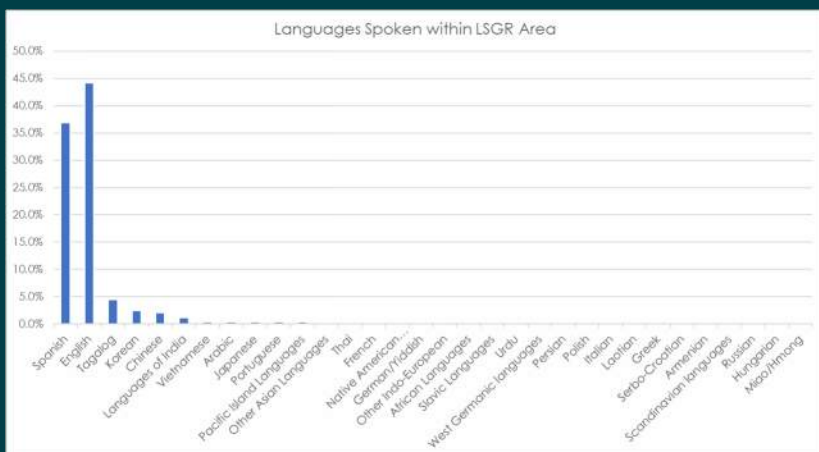




## Social Characteristics

The LSGR Watershed boundaries host a wide variety of demographics. To manage that, a demographics report was generated for each city showing population, age groups, per capita income, median household income, education, employment industries, race and ethnic diversity, ancestry and language spoken.

During the research, it was discovered that each city has a distinct socio-economic characteristic from a neighboring city. The racial diversity, educational backgrounds, and income levels are also different. The data compiled will be used to generate area-specific and age-specific engagement activities and outreach materials. The figures below are some examples of income and language demographics. Attachment C includes a spreadsheet for the various languages spoken per municipality.



The top three languages spoken on average within the LSGR as a whole are Spanish (36.9%), English (44.2%) and Tagalog (4.5%). The pie chart shows an example of the type of information collected by city. This correlates with the demographic data we found for Race or Ethnic Backgrounds where the highest average is 55.2% for Hispanic or Latino of any race.

The social and language differences will allow better targeting of language qualified interpreters when engaging the public during any future planned meetings or presentations.

## SCWP Context

The LSGR Watershed Area represents one of the nine watershed areas in the SCWP. Table 2.1 shows an estimated revenue amount for the Regional Program per watershed area as of 2020-2021. The Regional Program includes funding for regional projects, technical resource planning, and scientific studies.

The LSGR WASC encompasses two distinct watershed groups previously identified by the Los Angeles Regional Water Quality Control Board.

They are the Los Cerritos Channel and the LSGR group. Both groups have completed their Watershed Management Plans “WMPs” and are working under the MS4 Permit towards compliance. Both watershed groups have completed several regional projects and have several feasibility studies planned for additional priority projects. Some of those projects have been funded with a variety of grant programs, funding partners including Caltrans and municipal funds from the SCWP.

Central Santa Monica Bay	\$ 17.42 M
Lower Los Angeles River	\$ 12.72 M
<b>Lower San Gabriel River</b>	<b>\$ 16.56 M</b>
North Santa Monica Bay	\$ 1.83 M
Rio Hondo	\$ 11.49 M
Santa Clara River	\$ 5.87 M
South Santa Monica Bay	\$ 17.58 M
Upper Los Angeles River	\$ 38.44 M
Upper San Gabriel River	\$ 18.78 M
<b>REGIONAL PROGRAM TOTAL</b>	<b>\$ 140.6 M</b>

Artesia	\$ 0.21 M
Bellflower	\$ 0.83 M
Cerritos	\$ 0.94 M
Downey	\$ 1.44 M
La Habra Heights	\$ 0.17 M
La Mirada	\$ 0.92 M
Lakewood	\$ 1.10 M
Long Beach	\$ 4.60 M
Norwalk	\$ 1.09 M
Paramount	\$ 0.65 M
Pico Rivera	\$ 0.90 M
Santa Fe Springs	\$ 1.45 M
Signal Hill	\$ 0.28 M
Whittier	\$ 1.21 M

Funds from the SCWP Municipal Program can also contribute to regional program funding. Table 2.2 details the estimated revenue for each entity as of 2020-2021.

The programmed amounts shown are important for several reasons. First, funding available through the SCWP Regional and Municipal Programs are not sufficient to meet the needs for the LSGR watershed area. Thus, the role of the WC is to facilitate engagement, outreach, and help develop project concepts with potential multi-benefits, and identify projects partners and other funding opportunities to augment SCWP funding to the

extent possible, such as County Measures A, M and R, Proposition 68 and future state bonds (IRWMP/DWR, Parks, RMC, WCB, CNRA, SCC). Once this Plan is approved by the LSGR WASC, the main portion of the work will begin. Part of that effort will be to work with physics-based information, community-based data, neighboring WASC Watershed Coordinators, in this case the Lower Los Angeles River WASC and the Upper San Gabriel River WASC and with all of the WASC Watershed Coordinators in general. Great ideas can turn into amazing small-, medium-, and large-scale projects with input and involvement.



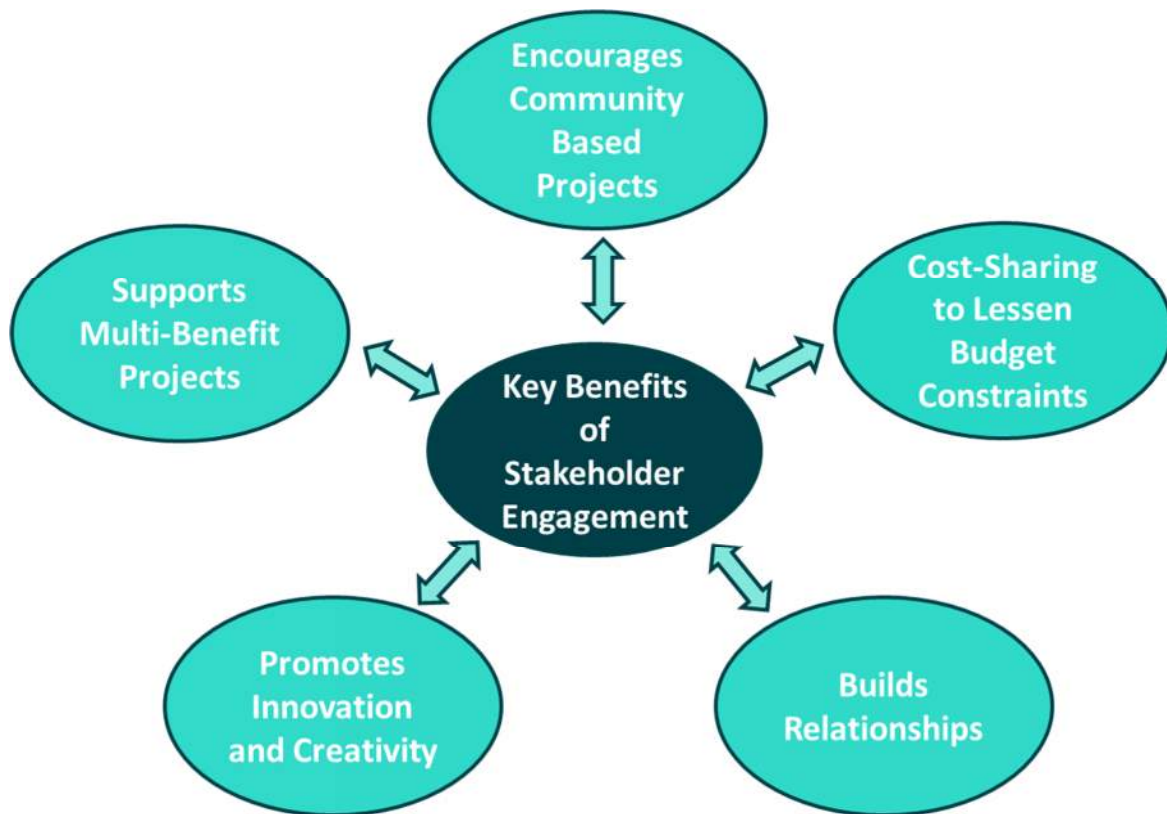


# Section 3 Interested Party Mapping

### 3. Interested Party Mapping

An essential part of engagement and outreach is to identify stakeholders and interested parties. Starting with the community-at-large, they are identified as residents, businesses, elected officials, municipal representatives, disadvantaged and under-represented communities, property owners, water providers, etc. Being able to reach these communities in an effective and efficient way requires a deliberate and organized approach.

The first step for successful outreach and engagement is to build a broad range of contacts. To start, WASC Members were interviewed to facilitate the beginning of this process. Their localized knowledge of community groups, events, and interested parties were instrumental to this task. Thus, in May/June of 2021, 15 interviews took place with the WC team (See Table 3.1). Following a pre-set list of questions led to the identification of a first tier of potential stakeholders. It is the hope that this first level of contacts will lead to additional stakeholder contacts throughout the LSGR watershed area.



<b>Table 3.1 – LSGR WASC Member Interviews with Watershed Coordinators</b>					
<b>Member Type</b>	<b>Member</b>	<b>Affiliation</b>	<b>Alternate</b>	<b>Alt-Affiliation</b>	<b>Interview Status</b>
<b>Agency</b>	Julian Juarez	LACFCD	Ramy Gindi	LACFCD	5/10/21 C
<b>Agency</b>	Alex Rojas	CBMWD	Jeremy Melendez	CBMWD	5/11/21 C
<b>Agency</b>	Diane Gatza	WRDSC	Lyndsey Bloxom	WRDSC	5/17/21 C
<b>Agency</b>	Kristen Ruffell	LAC Sanitation	Mike Sullivan	LAC Sanitation	5/6/21 C
<b>Agency</b>	Stephen Scott	Long Beach Parks/Rec/ Marine	Nancy Villaseñor	Long Beach Parks/Rec/ Marine	6/2/21 C
<b>Community Stakeholder</b>	Dan Knapp	Conservation Corps of Long Beach	Irene Lopez-Muro	Conservation Corps of Long Beach	5/16/21 C
<b>Community Stakeholder</b>	Adam Galia	Resident	Thalia Campos	Ctr for Asian Americans United for Self Empowerment	5/11/21 C
<b>Community Stakeholder</b>	Mark Stanley	RMC	Joseph Gonzalez	RMC	5/5/21 C
<b>Community Stakeholder</b>	Gabrielle Weeks	Long Beach Coalition for a Safe Environment			7/9/21 C
<b>Municipal Members</b>	Mike O'Grady	Cerritos	Rebecca Scott	Cerritos	5/26/21 C
<b>Municipal Members</b>	Delfino Consunji	Downey	Dan Mueller	Downey	5/17/21 C
<b>Municipal Members</b>	Lisa Ann Rapp	Lakewood	Konya Vivanti	Lakewood	5/18/21 C
<b>Municipal Members</b>	Melissa You	Long Beach	Wataru Kumagai	Long Beach	6/2/21 C
<b>Municipal Members</b>	Bernie Iniguez	City of Bellflower	Glen Kau	City of Norwalk	5/19/21 C
<b>Municipal Members</b>	Noe Negrete	Santa Fe Springs	Marlin Munoz	La Mirada	5/13/21 C
<b>Municipal Members</b>	Vicki Smith	Whittier	Kyle Cason	Whittier	5/13/21 C

Interviewees - Highlighted names  
C – Completed Interviews



The results of those conversations have identified the following potential interested parties:

- Amigos de los Rios
- Friends of the San Gabriel River
- Los Cerritos Wetlands Stewardship
- Los Cerritos Wetlands Authority
- Los Cerritos Wetlands Land Trust
- Los Angeles Neighborhood Initiative
- Lot to Spot
- River in Action
- LA County Bike Coalition
- California State University Long Beach
- Cerritos College
- California Greenworks
- Watershed Council of Health
- Tree People
- Long Beach Conservation Corps
- Heal the Bay
- Campfire LA
- Central Basin MWD Purveyors Monthly Workshop
- Korean Community Services
- Gateway Water Management Authority
- Gateway Cities Council of Governments
- ABC Unified School District and Campuses
- Chambers of Commerce Service Clubs
- Water Education for Latino Leaders "WELL"
- Watershed Conservation Authority (WCA)

In addition to contacting potential stakeholders, a list of potential events was also collected. Once COVID-19 restrictions are completely lifted and in-person events are once again safe, several community events will be attended by the WC. Depending on the event, a booth with educational information will be setup and/or an inter-active trailer called "Clear Water Vision" will be staged for hands-on and live presentations regarding stormwater.

Per the scope of work, we will provide outreach at four (4) events and participate in two (2) watershed-wide educational events. The following is a preliminary list of potential community events:

- Car Shows (several cities)
- Groundwater Festival by WRD at Albert Robles Center
- Summer Concert Series at various cities
- National Night Out Events at various cities
- Earth Day Events
- Earth Walk (Lakewood)
- Cultural Events in various cities
- Summer Street Festivals
- Farmer's Markets
- Arbor Day Tree Planting Festival
- Concerts in the Park – El Dorado
- Santa Fe Springs Swap Meet



Tree Planting Event!





# Section 4 Vision for Success & Evaluation

## 4. Vision for Success & Evaluation

### Vision Statement

Provide cleaner, safer and more reliable water for everyone in the Lower San Gabriel River Watershed Area as well as protect the environment

The Lower San Gabriel River Watershed Area SOEP will be utilized to engage communities and stakeholders, and to educate and support a safe clean water system that protects public health and the environment.

### Mission

Voters passed Measure W in 2018 which enhances how we can create safe, clean water now and for future generations. Communities in the Lower San Gabriel River Watershed Area will now be empowered to:

- **CAPTURE IT**

Increase our yearly collection of rainwater to supply water for millions of people in L.A. County annually.

- **CLEAN IT**

Reduce the volume of trash before it reaches our beaches and coastal waters.

- **MAKE IT SAFE**

Help eliminate the toxins, fertilizers, bacteria, plastics, metals from our cars, and chemicals that flow into the ocean.

- **MAKE IT FOR EVERYONE**

Protect creeks and streams, build parks, liven up concrete landscapes, and create green space for our communities.





## Goals

The goals of the Lower San Gabriel River Watershed Area mirror the goals of the larger Safe Clean Water Program. As such, the goals are to:

- Implement a new plan for L.A.'s water system to capture the billions of gallons of water we lose each year.
- Help protect our coastal waters and beaches from the trash and contaminants in stormwater that make people sick and threaten marine life.
- Modernize our 100-year-old water system infrastructure, using a combination of nature, science, and new technology.
- Help protect public health, ensuring safer, greener, healthier, and more livable spaces for all.
- Prepare our region for the effects of a changing climate — including recurring cycles of drought, wildfire, and flooding.
- Require strict community oversight and independent auditing to ensure local monies raised stay local.

The goals are to increase the capture and storage of rainwater, clean our water by removing waste before it reaches our beaches and coastal areas, make it safe by removing chemicals and toxins, and to make it for everyone by creating green spaces vs concrete as well as protecting our creeks and streams.

## Evaluation

To ensure success of the program it is important to measure and evaluate how the program is being implemented and how well it is meeting the established mission goals. The following strategies will be used to meet these goals and specific criteria established to measure success and includes a feedback process to continually improve the program for the future.





# Section 5 Strategies

## 5. Strategies

Hearing from a mixture of diverse groups, organizations and agencies regarding potential projects they want to see happen in their communities will help ensure diverse perspectives are considered from the program. Effective engagement can facilitate shaping plans to better serve the needs of the community. This stems from having a solid strategic outreach and engagement plan.

The OhanaVets Team will first connect with members of the LSGR steering committee to get their input and inquire for their network of organizations and groups who we can interface with. Such an example is from a simple survey we conducted with members from the LSGR steering committee, we were recommended to participate in the Lakewood Equestrian Center Technical Advisory Committee Meeting where we then learned about a Master Plan that is under development for the Equestrian Center that is located adjacent to the San Gabriel River. Since this group had involved technical experts to assist with the development of the center, we were able to learn about the project footprint and proposed facilities, and what type of measures were being considered to help eliminate the fertilizers, bacteria and other toxics from entering into waterbody.

If a group or organization finds themselves with an idea but in need of technical assistance, OhanaVets Team can collaborate with them and also connect them with other recommended technical experts, and also aligned not only with the goals and visions of the SCWP, but also potentially other programs as well.

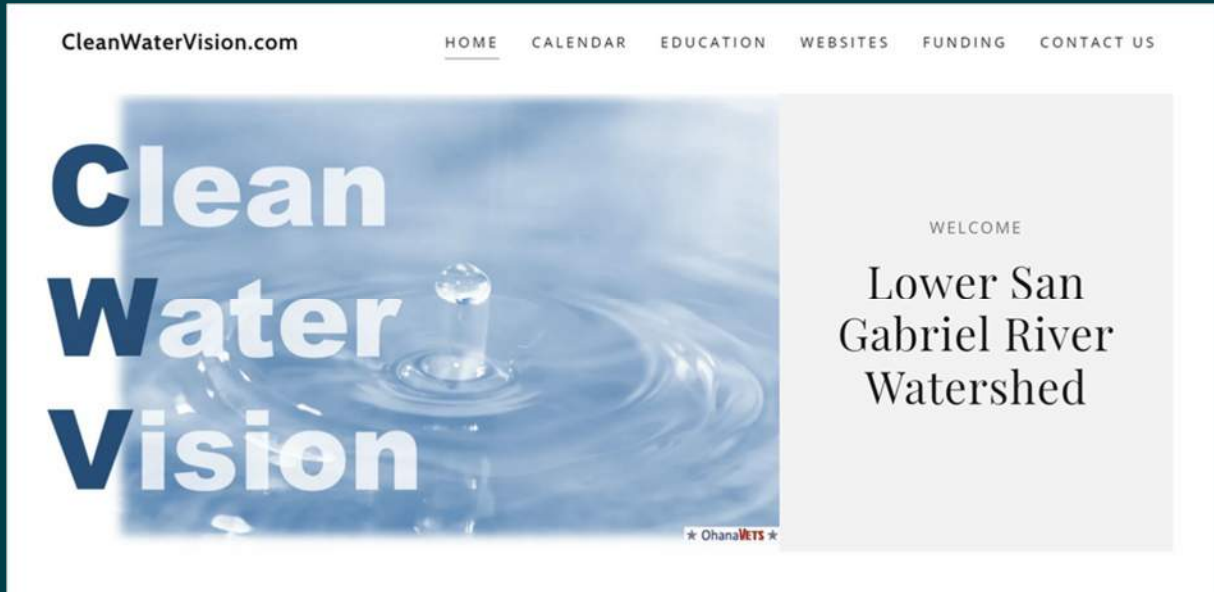
From there, we will update the LSGR map to displays the location of the various types of projects. The project identifiers will not only show where the project is located in the LSGR area and if it's in a Disadvantaged community, but it will also be categorized in such a way so that it's easy to determine the type of project it is, the status, project costs, Best Management Practice types, and estimated capture area.

As the Watershed Coordinator "WC" for the LSGR Watershed Area, our team will build a notification list of WASC members, City representatives, and other community stakeholders and representatives that can be added to this strategic notification list. In addition, key contacts of other area WCs can be shared to coordinate efforts across area boundaries. Example would be upstream projects, etc.



## Information Portal – Clean Water Vision

OhanaVets' Clean Water Vision web site Home Page ([CleanWaterVision.com](http://CleanWaterVision.com)) has been set up to accommodate specific Lower San Gabriel River Watershed information and to work in concert with the Safe Clean Water Programs web site.



Our site does not duplicate information, but rather provides the links to the following information:

- Safe Clean Water Program (SCWP) Home Page
- Lower San Gabriel River Watershed Area of the SCWP
- Lower San Gabriel River Watershed Area list of approved projects

### WATER QUALITY WEBSITES LINKS YOU CAN VIEW

Safe Clean Water Program (SCWP)

The Safe Clean Water Program of LA County provides local, dedicated funding to increase our local water supply, improve water quality, and protect public health

[FIND OUT MORE](#)

Lower San Gabriel River Area

The watershed area drains to the Pacific Ocean via the San Gabriel River and includes Coyote Creek and a downstream portion of the San Gabriel River.

[FIND OUT MORE](#)

Lower San Gabriel River Projects

Learn about Safe Clean Water Program projects, benefits and expenditures. We are protecting public health and our environment with a cleaner water supply.

[FIND OUT MORE](#)

The main purpose of the Clean Water Vision website is to provide the Stakeholders and Community a direct line of communication with us regarding specific questions, comments, and input on the program.

The screenshot displays the CleanWaterVision.com website interface. At the top, the navigation menu includes HOME, CALENDAR, EDUCATION, WEBSITES, FUNDING, and CONTACT US. Below the navigation, a heading reads "TO SUBMIT COMMENTS FOR THE NEXT LSGR MEETING". The main content area is divided into two columns:

- Step 1: Download Online Comment Card**  
Text: "Phone participants and the public are encouraged to submit public comments (or a request to make a public comment) prior to the meeting. Please use the Comment Card for instructions."  
Button: "DOWNLOAD FORM"
- Step 2: Submit Public Comments**  
Text: "All public comments will become part of the official record."  
Text: "To review the guidance documents and for more information, visit [www.SafeCleanWaterLA.org](http://www.SafeCleanWaterLA.org)"  
Button: "EMAIL YOUR COMMENT CARD"

Below the steps, a section titled "FOR FEEDBACK ON THIS WEBSITE ONLY" contains a "Send us a message!" heading and a contact form with the following fields:

- Name\*
- Email\*
- Message

A "SEND" button is located below the message field. Below the form, a small disclaimer states: "This site is protected by reCAPTCHA and the Google Privacy Policy and Terms of Service apply." A note follows: "Note: Comments collected will be presented at WASC meetings during the public comment period." At the bottom of the page, the text "CLEANWATERVISION" is centered, with "COPYRIGHT © 2021 CLEANWATERVISION - ALL RIGHTS RESERVED." on the left and "POWERED BY GODADDY" on the right.

As the website continues to be developed, it will include a form to submit public comments which will be submitted to the WASC and become a part of the public record. Additionally, visitors to the website will be able to subscribe to email blasts, notices, etc. The LSGR WASC's Facebook page will also have a link to the website to help grow the stakeholder email subscription list and to increase opportunities for input.

Our Contact tab allows individual to send us messages that will be collected and presented at WASC meetings during the public comment period. Based on the WASC receipt of such messages and discussion from the committee, direction can be provided to Watershed Coordinators on the actions to take and necessary follow up.



## Engage Stakeholders, Municipalities, and Community Groups

### Vision/Evaluation Criteria:

Increase visibility of the LSGR WASC to increase attendance and involvement at SCWP and WASC meetings



### Strategies:

- Potential stakeholders identified in the Interested Parties Mapping will be contacted and a growing database of contacts will be developed.
- Virtual flyers may be created to invite attendance for in-person and/or virtual meetings (minimum of two in the first year).
- Virtual Storybooks may be created and shared with Stakeholders.
- A Facebook Group Page and a Twitter Account will be created. Interested Parties will be asked to “Like” the page and “Share” it to broaden the viewership.
- A dedicated LSGR WASC website will be created that includes up-to-date information regarding community events, SCWP Meetings, involvement opportunities, calendar of events, links to the SCWP website and project portal.
- Community and school events will be scheduled or utilized to distribute flyers, meet individuals, provide educational opportunities, and establish relationships. \*\*See Potential Community Events List \*\*
- Surveys (on-line and printed) will be used to gauge interest in local community needs (multi-lingual as necessary to specific community) with information on how to get involved with SCWP and LSGR.



## Solicit Input, Connect to Technical Assistance “TA” Opportunities

### Vision/Evaluation Criteria:

Identify preliminary project concepts that are candidates for Technical Assistance and meet the goals of the SCWP.

### Strategies:

- Attend organization workshops and meetings and give presentations/information about SCWP and how to get involved; solicit ideas for project concepts.
- Create and host a technical advisory committee made up of NGOs and other technical experts to convene quarterly to offer conceptual ideas in communities.
- Speak with municipal staff members to help identify blighted or vacant parcels.
- Attend community events with flyers, booth, water experience/education trailer, etc.



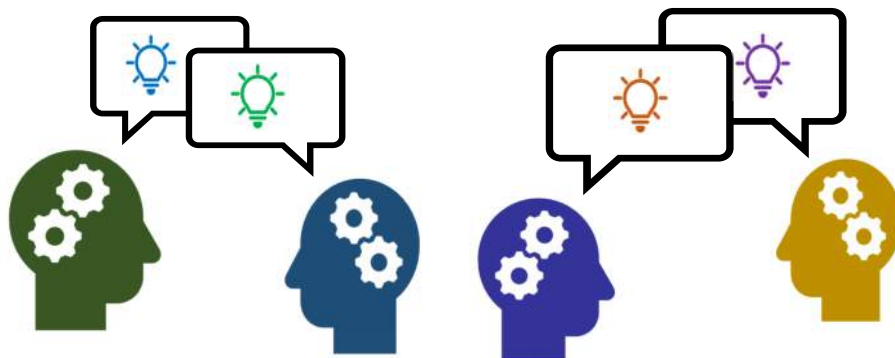
## Ensure Diverse Perspectives are Shared with District/WASCS

### Vision/Evaluation Criteria:

Increase visibility and involvement of local communities that represent diverse socio-economic and race perspectives and include those in project concepts, project design and reports to the LSGR WASC, other WASC WCs and the District.

### Strategies:

- Attend wide variety of events including small and informal events that offer opportunities for one-on-one conversations.
- Interview individuals that are well-connected in communities to solicit names of local leaders that can help facilitate the need for more inclusion and involvement.
- Host area-specific, inter-active in-person and virtual workshops
- Attend events with the Clear Water Vision Inter-Active Stormwater Pollution/Treatment Trailer.
- Website and Social Media
- Door to door canvassing with leave behind literature that invites interest and participation.





## Identify and Ensure Involvement of Members of Disadvantaged and Under-Represented Communities

### Vision/Evaluation Criteria:

Address the goals of the SCWP by soliciting ideas and needs, offering technical assistance to Disadvantaged Communities and underrepresented areas and facilitating their involvement in the SCWP.



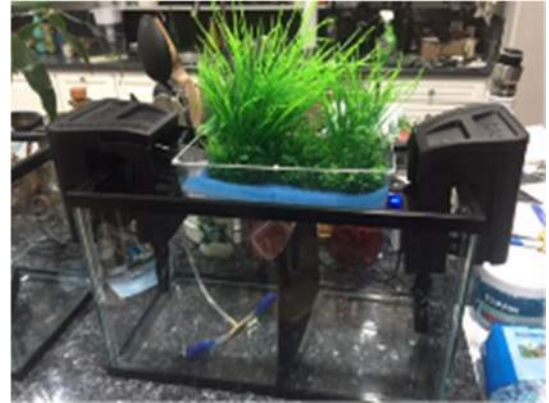
### Strategies:

- Solicit input from community leaders, municipal leaders to identify areas and communities that should be engaged in the SCWP.
- Use statistical data to identify known areas.
- Identify physical or other barriers that prevent more involvement.
- Attend community events and speak with the general public about local areas.
- Inter-active planning and conceptual designing workshops.
- Coordinate efforts and data with the Greater LA IRWM Disadvantaged Community Involvement Program "DACIP".

## Identify Educational Programming About Watershed Management, Ecological and Community Issues

### Vision/Evaluation Criteria:

Inform the SCWP, the LSGR WASC and interested parties about local and regional perspectives and needs and develop an effective educational program that will align with those perspectives.



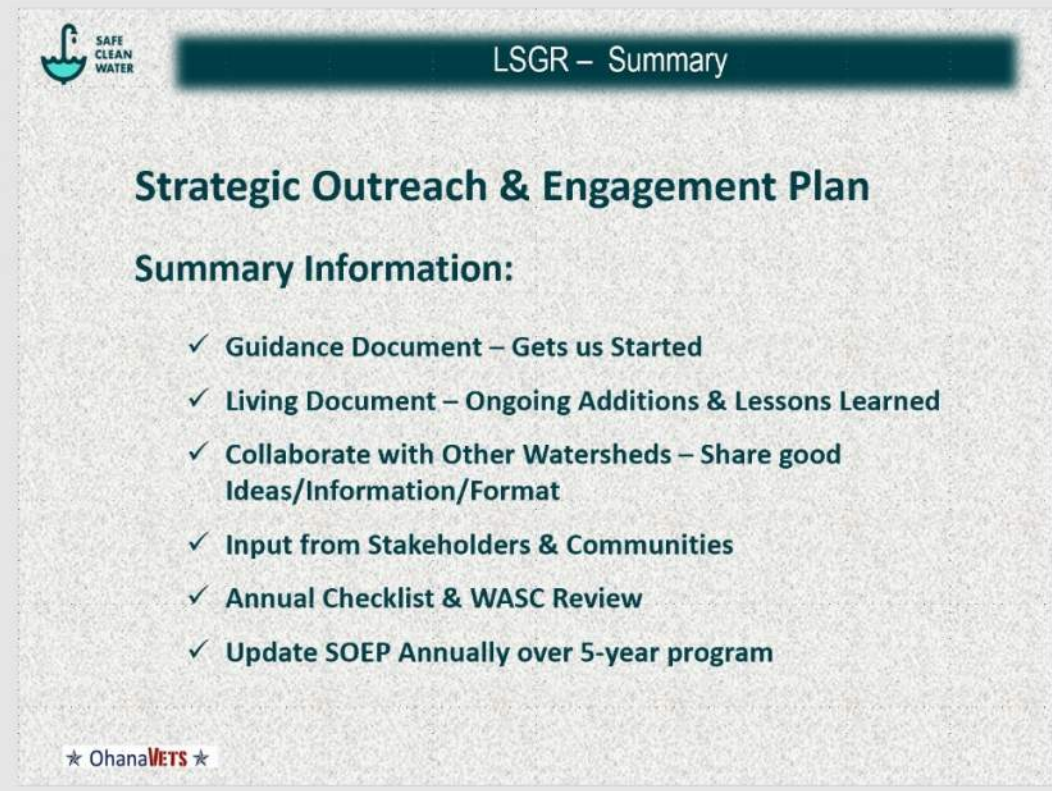
### Strategies:

- Consistent reporting of collected information and submittal to the District, other WCs, and to the WASC.
- Facilitate inter-active, educational opportunities at schools, workshops, events, etc.
- Attend/participate in LSGR WASC Meetings
- Attend Regional Oversight Committee (ROC) meetings
- Coordinate with other WCs



## Summary Information & Measurement of Success

The interested parties will be contacted on a bi-annual basis to engage by providing support and receive feedback on watershed projects, funding opportunities, and community educational opportunities or meetings.



**SAFE CLEAN WATER**

### LSGR – Summary

## Strategic Outreach & Engagement Plan

### Summary Information:

- ✓ **Guidance Document – Gets us Started**
- ✓ **Living Document – Ongoing Additions & Lessons Learned**
- ✓ **Collaborate with Other Watersheds – Share good Ideas/Information/Format**
- ✓ **Input from Stakeholders & Communities**
- ✓ **Annual Checklist & WASC Review**
- ✓ **Update SOEP Annually over 5-year program**

★ Ohana**VETS** ★





## Section 6 Identify Collaborative Efforts



## 6. Identify Collaborative Efforts

The work of the LSGR WASC will be shared by the WC with other WCs in the SCWP. This will go above and beyond the requirements of the SCWP. On-going dialogue and coordination is a must to reduce the potential of over-burdening stakeholders with similar or different information. Currently, the DACIP is conducting outreach and will help to identify water supply and/or water quality projects that are in Disadvantaged Communities. The SCWP will coordinate their outreach in the LSGR IRWM sub-region.

In addition, the LSGR WASC WC will meet regularly with neighboring WCs to ensure maximum benefit and consistency. The exhibit below identifies the four neighboring watershed area we will be working closely with.



Agencies within and surrounding the Lower San Gabriel River footprint will be contacted and engaged as part of our collaboration effort. The list of Agencies is included in **Section 3 – Interested Party Mapping**.



# Attachment A Self Inspection Checklist

# Attachment A – Self Inspection Checklist

## LSGR SOEP – ANNUAL SELF INSPECTION CHECKLIST

1. Engage Stakeholders, municipalities, community groups.	Yes	No	N/A	Remarks
1. Have WASC board members in the watershed been identified, added to contact tracking list, and contacted for feedback at least bi-annually?	<input type="checkbox"/>	<input type="checkbox"/>	<input type="checkbox"/>	
2. Has a list of additional (non-WASC) watershed stakeholders been identified, added to the contact tracking list, and contacted for feedback at least bi-annually?	<input type="checkbox"/>	<input type="checkbox"/>	<input type="checkbox"/>	
3. Are there tribal governments or indigenous leaders that need to be engaged directly by the Flood Control District or County?	<input type="checkbox"/>	<input type="checkbox"/>	<input type="checkbox"/>	
4. Have the school districts within the watershed been contacted for possible inclusion on the contact tracking list?	<input type="checkbox"/>	<input type="checkbox"/>	<input type="checkbox"/>	
5. Have efforts to reach marginalized or overlooked community groups been attempted. List efforts in Remarks.	<input type="checkbox"/>	<input type="checkbox"/>	<input type="checkbox"/>	
2. Solicit input, connect to technical assistance (TA) opportunities.	Yes	No	N/A	Remarks
1. Have technical assistance (TA) providers been identified and contacted?	<input type="checkbox"/>	<input type="checkbox"/>	<input type="checkbox"/>	
2. Have current projects been reviewed by (TA) providers?	<input type="checkbox"/>	<input type="checkbox"/>	<input type="checkbox"/>	
3. Has a communication channel between TA providers and WASC members been established?	<input type="checkbox"/>	<input type="checkbox"/>	<input type="checkbox"/>	
4. Has a feedback system been implemented to allow the watershed community to provide feedback to the WASC? Explain in Remarks.	<input type="checkbox"/>	<input type="checkbox"/>	<input type="checkbox"/>	
5. Has the Watershed Coordinator conducted public meetings to educate and gain support of the SCWP goals? Explain in Remarks.	<input type="checkbox"/>	<input type="checkbox"/>	<input type="checkbox"/>	



<b>3. Ensure diverse perspectives are shared with the District and WASCs.</b>	<b>Yes</b>	<b>No</b>	<b>N/A</b>	<b>Remarks</b>
<b>4. Identify and ensure the involvement of members of disadvantaged and underrepresented communities.</b>	<b>Yes</b>	<b>No</b>	<b>N/A</b>	<b>Remarks</b>
<b>5. Identify educational programming about watershed management, ecological and community issues.</b>	<b>Yes</b>	<b>No</b>	<b>N/A</b>	<b>Remarks</b>





# Attachment B Contact Tracking List







# Attachment C LSGR Region – Languages Spoken

# Attachment C – LSGR Region – Languages Spoken

LOWER SAN GABRIEL RIVER REGION - LANGUAGES SPOKEN																
Languages	TOTAL AVERAGE	Municipalities														
		Artesia	Bellflower	Cerritos	Downey	La Mirada	Lakewood	Long Beach	Norwalk	Paramount	Pico Rivera	Signal Hill	Santa Fe Springs	Whittier	La Habra Heights (data not available)	LA County (data not available)
Spanish	36.9%	30.1%	44.5%	8.0%	60.5%	2.2%	3.0%	34.0%	54.2%	72.7%	66.9%	21.5%	48.9%	33.4%	-	-
English	44.2%	31.7%	43.0%	43.4%	31.3%	56.3%	65.1%	53.9%	33.0%	24.0%	30.3%	58.0%	43.1%	61.1%	-	-
Tagalog	4.5%	14.6%	5.0%	10.5%	1.7%	4.0%	7.0%	3.1%	4.2%	0.8%	0.7%	3.7%	2.4%	0.9%	-	-
Korean	2.5%	3.0%	0.8%	11.0%	1.9%	8.3%	0.8%	0.5%	2.1%	-	-	1.6%	2.1%	0.5%	-	-
Chinese	2.1%	4.5%	0.7%	11.8%	0.5%	2.1%	1.1%	0.6%	1.0%	0.1%	0.6%	2.6%	1.0%	1.2%	-	-
Languages of India	1.2%	6.1%	0.3%	4.5%	1.0%	1.3%	0.7%	0.5%	0.8%	0.2%	-	0.5%	0.1%	0.1%	-	-
Vietnamese	0.4%	0.2%	-	-	0.3%	0.7%	1.0%	0.6%	1.0%	-	0.4%	0.9%	-	0.1%	-	-
Arabic	0.4%	0.1%	1.4%	0.3%	0.7%	0.3%	0.4%	0.3%	0.2%	0.3%	0.1%	0.8%	-	-	-	-
Japanese	0.4%	0.2%	0.2%	1.9%	-	0.5%	0.3%	0.4%	0.1%	-	-	0.6%	0.2%	0.3%	-	-
Portuguese	0.4%	3.6%	0.1%	0.3%	0.1%	-	-	0.1%	0.1%	-	-	0.2%	0.1%	-	-	-
Pacific Island Languages	0.3%	1.4%	0.4%	0.5%	-	0.2%	0.8%	0.5%	0.3%	0.4%	-	-	-	-	-	-
Other Asian Languages	0.3%	1.3%	-	1.5%	0.2%	0.3%	0.1%	0.1%	-	-	0.1%	-	-	-	-	-
Thai	0.2%	0.1%	-	0.7%	0.1%	0.1%	0.5%	0.1%	0.4%	0.1%	-	0.4%	0.2%	-	-	-
French	0.2%	-	0.2%	-	0.2%	0.2%	0.7%	0.4%	0.1%	-	-	0.2%	-	0.1%	-	-
Native American Languages	0.1%	0.1%	0.1%	0.2%	0.1%	0.1%	0.1%	0.3%	-	-	-	0.1%	0.5%	0.2%	-	-
German/Yiddish	0.1%	-	0.2%	0.5%	0.1%	-	0.2%	0.2%	-	0.1%	-	-	-	0.2%	-	-
Other Indo-European	0.1%	-	-	-	0.1%	0.4%	0.2%	-	0.2%	-	-	-	0.1%	0.1%	-	-
African Languages	0.1%	-	-	0.4%	0.1%	-	0.2%	0.1%	-	-	-	-	0.1%	0.1%	-	-
Slavic Languages	0.1%	-	-	-	0.3%	-	-	0.2%	-	-	0.1%	0.2%	0.1%	0.1%	-	-
Urdu	0.1%	-	-	0.4%	-	0.1%	-	-	0.3%	-	-	-	-	0.1%	-	-
West Germanic languages	0.1%	0.1%	-	0.1%	-	0.2%	0.2%	-	-	-	-	-	0.2%	-	-	-
Persian	0.1%	-	-	0.1%	0.1%	-	-	0.2%	0.1%	-	-	0.2%	-	-	-	-
Polish	0.1%	-	-	-	-	0.2%	-	-	-	-	-	0.5%	-	-	-	-
Italian	0.0%	0.1%	-	-	-	-	-	-	-	-	-	0.1%	0.1%	0.3%	-	-
Laotian	0.0%	-	-	-	-	0.1%	-	-	-	-	-	0.2%	-	0.2%	-	-
Greek	0.0%	-	-	-	0.2%	-	-	-	-	-	-	-	-	0.1%	-	-
Serbo-Croatian	0.0%	-	-	-	-	-	0.1%	-	-	-	-	0.1%	-	-	-	-
Armenian	0.0%	-	-	-	-	-	-	-	-	-	0.1%	-	-	0.1%	-	-
Scandinavian languages	0.0%	-	-	-	-	-	0.1%	-	-	-	-	-	-	-	-	-
Russian	0.0%	-	-	-	-	-	-	0.1%	-	-	-	-	-	-	-	-
Hungarian	0.0%	-	-	0.1%	-	-	-	-	-	-	-	-	-	-	-	-
Miao/Hmong	0.0%	-	-	-	-	-	-	-	-	-	-	-	-	-	-	-

Source: [www.neighborhoodscout.com](http://www.neighborhoodscout.com)

